

# TEAMWEAR

## 2026

### COLLECTION



**ABOUT JOMA**



The turning point in the company's growth was marked by the introduction of color in football. Fructuoso López launched the first colored boots in the nineties. They stopped being black to be dyed in other colors and forever revolutionize the playing field.



# 1965



Joma was born in 1965, founded by a young entrepreneur from Portillo de Toledo. In 1969, the first assembly line was established in Fuensalida with 20 employees.

**"IN 1965 I FOUNDED JOMA WITH THE COMMITMENT TO DEVOTE ALL MY EFFORT, TIME, AND LOVE TO THE COMPANY. 60 YEARS LATER, THAT IS EXACTLY WHAT WE DO."**

**D. FRUCTUOSO LÓPEZ**

# HISTORY

## 1983



Joma faces the challenge of globalization. Attends the ISPO in Munich for the first time, the most important European fair in the sports sector.

## 1996



Joma launches in 1996 the famous campaign "COLOR IN FOOTBALL". Revolutionizes the global market for football boots. Alfonso wears white boots, Morientes surprises with red ones.

## 2000



Joma's product distribution expands to more than 140 countries. This makes it the leading Spanish sports brand and enters the top 10 worldwide. It also begins the opening of its own stores and corners.

## 2016



Joma enters Rio 2016 dressing 10% of athletes, 18 federations, the COE and 8 committees. With 10 subsidiaries (Spain, Italy, USA, UK, Germany, Mexico, Norway, Denmark, China and Russia) and 20% annual growth, it reaches 4 million footwear and textile references that year.

## 2017



Joma implements new robotic machinery in its international logistics warehouse with the aim of streamlining work, from product storage to package preparation for shipment worldwide. It manages to deliver 87% of sales ahead of schedule, reducing the margin of error to 1%.

## 2020



Joma researches and develops to ensure that all its technologies are proprietary, constantly innovating to enhance performance and durability. Quality is its essence and the foundation of every product.

## 2021



At the Tokyo 2020 Olympic Games, Joma outfits more than 1,500 athletes from 12 countries, including Spain, Portugal, Morocco, Jordan, Kazakhstan, Honduras, Malta, and Mauritius.

## 2023



The largest store expansion in its history. The Brand Store concept drives a strong national and international presence, with renewed interior design and optimized spaces.

## 2025



The brand expands to over 140 countries through stronger brand image and increased R&D investment. At Paris 2024, it sets a record by outfitting 15% of athletes, becoming the Spanish brand with the greatest global presence.



# OVERVIEW

## 90.000 M2

The company's headquarters is located in Portillo de Toledo, Spain.

## 140 COUNTRIES

The brand is sold in 140 countries from five continents.

## 150 TRADEMARK RECORDS

Joma is capable of operating in 150 countries.

## 10 SUBSIDIARIES

Usa, Italy, Mexico, Germany, Norway, Denmark, Russia, United Kingdom, China, and Brazil.

## +1 MILLION

The use of recycled fabric meters positions us as a sustainable brand.

## 23.250 SPONSORSHIPS

Professionals enhance and prescribe brand quality globally.

## 335.000 ORDERS

Managed annually at the headquarters.

## 85%

A portion of our production consists of ongoing items for groups/ organizations.

## +8.000 DESIGNS

Customized textile and footwear orders per year for our clients and sponsorships.

## +4 MILLIONS

More than four million items, including apparel and footwear, in our warehouses.

## 4'5 MILLIONS

Of brochures and catalogs worldwide.

## 18 CERTIFICATIONS

For Joma, having external certifications for products and processes is key.

## 5000 PACKAGES

Daily shipments are dispatched from the robotic facilities located at the headquarters.

## 1'5 MILLIONS

Followers across social media platforms.

## 70% FOR EXPORT

70% of JOMA's sales are attributed to international transactions.

## 18 QUALITY STAMPS

Endorse Joma's philosophy.

## 400 MILLIONS

Viewers worldwide.

## B2B DIGITAL

It is our exclusive platform for clients, translated into 9 languages.

## 3000 JOBS

We employ more than 3,000 individuals worldwide.

## 50% WOMEN

Commitment to equality and cultural diversity.

## 18%

A portion of the employees are dedicated to marketing and sponsorship.

## +35%

Sales growth in 2024.



# INTERNATIONALIZATION

Since its beginnings, Joma has had international expansion at its core. With trademark registrations in numerous countries and a clear vision of global growth, the company now sells in over 140 countries and continuously strengthens its presence, improving its positioning in each market.

## 140 COUNTRIES

The brand is sold in 140 countries from five continents.

## 150

Trademark registrations allowing operations in 150 countries.

## 50

Participation in 50 leading international trade fairs.

## +100.000

Retail clients.

## +1.500

Company-owned stores worldwide.

## 350 SHOROOMS

Company-owned showrooms worldwide.

## 1'5 MILLIONS

Followers across social media platforms.

## +500.000

Hours per year dedicated to sales service.



# BUSINESS MODEL

Joma Sport's business model is built on a firm commitment to design, technological innovation, and an unwavering dedication to offering customers the best quality.

Technology is a core pillar of our strategy. Joma Sport invests over €45,000 per day to improve its products and implement new systems and advancements. These innovations are rigorously tested by professional athletes who push each product to its limits, ensuring top-level performance.



**+€45,000 IN R&D**

15 3D printers  
4 tech applications  
8 design applications



**+8000**

Customized textile and footwear designs per year. And more than 600 product tests conducted.

**4'5 MILLIONS**

Catalogs and brochures.



**+1 MILLION**

Square meters of recycled fabric.

# LOGISTICS

We operate our own logistics center with more than 90,000 m<sup>2</sup> of warehouse space, equipped with advanced robotics capable of processing 30,000 units per hour and managing a stock of over four million product references.

In 2024 alone, we sold more than 30 million units, positioning the brand among the world's Top 10 sports brands and as the number one sports brand in Spain, with distribution reaching 140 countries.



## +30 MILLION ITEMS

Our warehouse handled the movement of more than 30 million products in 2024 alone.

## 6 ROBOTS

A large-scale robotic storage infrastructure. In 2024, the logistics center shipped 5,000 packages daily.

## 1,700 ORDERS/DAY

In 2024, our automated warehouse processed an average of 1,700 orders per day, totaling 443,000 orders for the year.

## 35% SALES GROWTH

Sales increased by 35% in 2024 compared to the previous year.





# ÍNDICE / INDEX

- 3 History.**
- 4 Overview.**
- 5 Internationalization.**
- 6 Business Model.**
- 7 Logistics.**
- 9 Sizes.**
- 10 Commitment to Sustainability.**
- 11 Joma Official Stores.**
- 12 Why Joma?**
- 13 History of Football.**
- 14 Sponsors.**
- 15 Technology.**
- 16 Teamwear Lifecycles.**
- 17 Competition.**
  - 19 Vintage Eco-Retro
  - 20 Liga Pro.
  - 22 New Area.
  - 23 Toletum VI.
  - 24 Toletum VII.
  - 26 Heroic.
  - 28 Picasho City.
  - 30 Tiger VIII.
  - 32 Inter Classic.
  - 33 Inter V / Inter IV.
  - 34 Europa VI.
  - 35 Tiger VII.
  - 36 Championship 20<sup>o</sup>.
  - 38 Championship VIII.
  - 40 Lider (set).
  - 42 Winner IV.
  - 43 Phoenix II (set).
  - 44 Academy III.
  - 46 Phoenix (set).
  - 48 Pro-short / Glasgow II (shorts).
  - 49 Heroic (shorts).
  - 50 Tokio II (shorts).
  - 52 Maxi (shorts).
  - 53 Nobel / Treviso / Paris II (shorts).
  - 54 Professional III (socks).
  - 55 Professional III / Professional II (socks).
  - 56 Premier II (socks).
  - 57 Calcio 24 / Zebra II / Classic-3 (socks).
  - 58 Leg II / Classic-2 (socks).
- 59 Goalkeeper.**
  - 60 Zamora XI (set).
  - 61 Winner GK (set) / Zamora IX (set).
  - 62 Protec.
- 63 Basketball.**
  - 64 Four.
  - 65 Olimpia Basket.
  - 66 Lider.
  - 68 Phoenix II.
  - 70 Cancha.
  - 72 Combi Premium.
  - 74 Kansas.
  - 75 Aro reversible / Rookie short.
  - 76 Combi Basket / Nobel Long / Treviso.
  - 77 Tactica / Final.
- 78 Rugby.**
  - 79 Nation.
  - 80 Myskin / Stimulus.
  - 81 Phoenix III.
  - 82 Olimpiada.
  - 83 Try / Hook / Tyro.
  - 84 Stimulus.
  - 85 Protec / Balls (rugby).
- 86 Handball.**
  - 87 Hispa V.
  - 88 Dinamo II.
  - 90 Phoenix.
  - 91 Olimpiada / Strong.
  - 92 Dinamo / Tactica.
  - 93 Nobel / Paris II.
- 94 Volley.**
  - 96 Championship 20<sup>o</sup>
  - 98 Championship VIII.
  - 100 Academy IV.
  - 102 Academy III.
  - 103 Treviso / Stella II / Vella II.
  - 104 Accesorios.
- 105 Field Hockey.**
  - 106 Lider.
  - 108 Treviso / Open II.
- 109 Cricket.**
  - 110 Cricket.
- 112 Basque ball.**
  - 113 Cannes III.
- 114 Referee.**
  - 115 Respect III.
- 116 My Design.**
- 119 Picasho.**
- 126 Running.**
  - 128 Record Pro.
  - 134 Elite XII.
  - 135 Elite XI.
  - 139 Record II.
  - 143 Combi running.
  - 144 Nature.
  - 145 Combi running / Olimpia.
  - 146 Record III.
  - 147 Olimpia.
  - 148 Trail.
- 150 Swimming.**
  - 151 Shark III.
  - 152 Baño.
  - 154 Bathrobe / Towel / Sandal.
- 155 Racket sport.**
  - 156 Terra danubio.
  - 160 Olimpiada.
  - 162 Master / Drive / Katty.
  - 163 Open II / Torneo / Torneo III.
- 165 Training.**
  - 166 Vintage. Eco-Retro.
  - 167 Eco-Retro.
  - 168 Heroic.
- 172 Looks.**
  - 172 Championship 20<sup>o</sup>.
  - 178 Championship VIII.
  - 187 Winner IV.
  - 190 Lider.
  - 195 Phoenix II.
  - 198 Combi Premium.
  - 204 Danubio IV.
  - 206 Olimpiada.
  - 208 Winner.
  - 210 Academy IV.
- 215 Combi.**
  - 216 Costa micro.
  - 217 Doha / Tirreno.
  - 218 Menfis / Elba / Cleo II.
  - 219 Gala / Cannes II / Estadio II.
  - 220 Hobby.
  - 221 Hobby II / Combi.
  - 222 Faraon / Cairo II.
  - 223 Sena / Combi.
  - 226 Diana / Siena.
  - 227 Eventos.
- 228 Trousers.**
  - 230 Vintage Eco Pro / Combi Premium / Elite XI.
  - 231 Costa micro / Tirreno.
  - 232 Championship 20<sup>o</sup> / Gladiator II / Gladiator / Olimpiada.
  - 233 Staff / Combi gold / Cannes III.
  - 234 Heroic / Championship VII.
  - 235 Advance II.
  - 236 Cleo II / Nilo.
  - 237 Suez II / Elba.
  - 238 Cannes II / Estadio II.
  - 239 Capri / Vela / Luxor II.
  - 240 Combi / Master / Miami.
  - 241 Open III / Drive / Costa II / Cannes.
  - 242 Hobby II / Hobby / Stella II.
  - 243 Sculpture.
  - 244 Ascona / Dase II.
- 245 Cotton Looks.**
  - 246 Heroic.
  - 250 Olimpiada.
  - 252 Universo.
  - 254 Montana.
  - 255 Montana Cuff.
  - 256 Jungle.
  - 257 Nantes / Lille.
  - 258 Bali III.
  - 259 Desert.
  - 260 Versailles / Combi Street / Oasis.
  - 261 Oasis II / Latino IV.
- 262 Winter.**
  - 263. Islandia III.
  - 264. Heroic.
  - 265 Urban V.
  - 266 Cervino II.
  - 267 Berna IV.
  - 268 Trivor II.
  - 270 Basilea.
  - 271 Rain.
  - 272 Wind / Storm / Bremen.
  - 273 Sport bench / Cervino / Leeds.
- 274 Brama.**
  - 275 Brama Classic.
  - 278 Warmer.
  - 279 Brama Classic / Brama Academy.
- 282 Balls.**
- 300 Accesorios.**

There might be variation in the articles in design, colour and/or sizes; correct references are in [www.joma-sport.net](http://www.joma-sport.net)  
Puede haber variación de los artículos en diseño, colorido y/o tallas; las referencias correctas están en [www.joma-sport.net](http://www.joma-sport.net)



# TALLAS SIZES

## 1. COMPRESSION



Corte ajustado/entallado que ayuda a mejorar la flexibilidad y el resultado del ejercicio físico.

*Ultra-slim fit that enhances flexibility and athletic output.*

## 2. FITTED



Diseñado para dar forma al cuerpo sin constricciones y sin ser demasiado ajustado.

*Designed to contour the body without constrictions or compression.*

## 3. SEMI FITTED PRO



Corte ajustado y atlético entallado en la cintura para proporcionar movilidad y confort.



*Ultra-slim fit and athletic cut nipped at the waist to ensure mobility and comfort.*

## 3. SEMI REGULAR FITTED



No ajustado semi entallado en la cintura, para proporcionar movilidad y confort.



*Not fitted, semi tight at the waist to ensure mobility and comfort.*

## 4. REGULAR



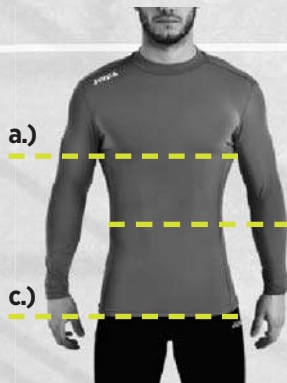
No ajustado, no entallado en la cintura, para proporcionar movilidad y confort.



*Not fitted, not tight at the waist to ensure mobility and comfort.*

CEE	4	4	6	8	10	12	14	S	M	L	XL	XXL	3XL	4XL	5XL
MEX	4	4	6	8	10	12	14	CH	M	G	XG	XXG	3XG	4XG	5XG
USA	4	4	6	Y-SM	Y-S	Y-M	Y-L	S	M	L	XL	XXL	3XL	4XL	5XL
DE	104	104	116	128	140	152	164	S	M	L	XL	XXL	3XL	4XL	5XL
CEE		6XS	5XS	4XS	3XS	2XS	XS	S	M	L	XL	XXL	3XL	4XL	5XL
MEX		4	6	8	10	12	14	CH	M	G	XG	XXG	3XG	4XG	5XG
USA		YXXS	YXS	YS	YM	YL	YXL	S	M	L	XL	XXL	3XL	4XL	5XL
DE		104	116	128	140	152	164	S	M	L	XL	XXL	3XL	4XL	5XL
CEE	2 - 4		6 - 8		10 - 12		XS - S	M	L	XL	XXL - 3XL		4XL	5XL	
MEX	2 - 4		6 - 8		10 - 12		14 - CH	M	G	XG	XXG - 3XG		4XG	5XG	
USA	2 - 4		6 - Y-SM		Y-S - Y-M		Y-L - S	M	L	XL	XXL - 3XL		4XL	5XL	
DE	98 - 104		116 - 128		140 - 152		164 - S	M	L	XL	XXL - 3XL		4XL	5XL	
CEE		6XS - 5XS		4XS - 3XS	2XS	XS	S	M	L	XL	XXL - 3XL		4XL	5XL	
MEX		4 - 6		8 - 10	12	14	CH	M	G	XG	XXG - 3XG		4XG	5XG	
USA		YXXS - YXS		YS - YM	YL	YXL	S	M	L	XL	XXL - 3XL		4XL	5XL	
DE		104 - 116		128 - 140	152	164	S	M	L	XL	XXL - 3XL		4XL	5XL	

## PARTE SUPERIOR



a.)

b.)

c.)

### a.) Pecho

Mide alrededor de la parte más ancha del pecho, manteniendo la cinta horizontal.

### b.) Cintura

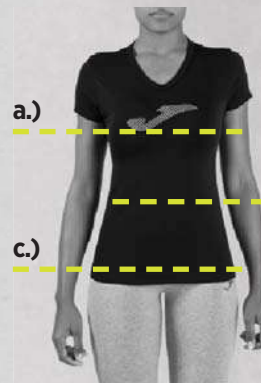
Mide alrededor de la parte más estrecha de la cintura, manteniendo la cinta horizontal.

### c.) Cadera

Manteniendo ambos pies juntos, mide alrededor de la parte más ancha de la cadera, manteniendo la cinta horizontal.

Talla / Sizes	Pecho / Chest (A)	Cintura / Waist (B)	Cadera / Hip (C)
S	88 - 95	75 - 80	86 - 93
M	96 - 105	81 - 88	94 - 100
L	106 - 112	89 - 97	101 - 108
XL	113 - 119	98 - 105	109 - 116
2XL	119 - 124	106 - 112	117 - 122
3XL	124 - 129	113 - 120	122 - 126
4XL	130 - 135	121 - 126	127 - 131
5XL	135 - 140	126 - 132	132 - 137
* 2XL - 3XL	115 - 143	104 - 134	114 - 138

## PARTE SUPERIOR



a.)

b.)

c.)

### a.) Pecho

Mide alrededor de la parte más ancha del pecho, manteniendo la cinta horizontal.

### b.) Cintura

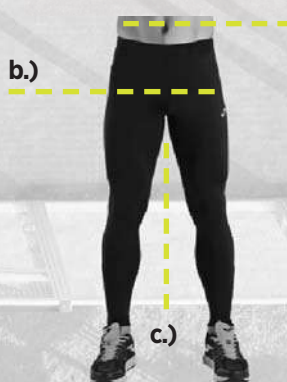
Mide alrededor de la parte más estrecha de la cintura, manteniendo la cinta horizontal.

### c.) Cadera

Manteniendo ambos pies juntos, mide alrededor de la parte más ancha de la cadera, manteniendo la cinta horizontal.

Talla / Sizes	Pecho / Chest (A)	Cintura / Waist (B)	Cadera / Hip (C)
S	83 - 89	69 - 73	91 - 95
M	90 - 94	74 - 78	96 - 101
L	95 - 98	79 - 83	102 - 108
XL	99 - 103	84 - 88	109 - 114
2XL	104 - 109	89 - 93	115 - 120
3XL	110 - 115	94 - 98	121 - 126
4XL	116 - 121	99 - 103	126 - 131
* 2XL - 3XL	103 - 106	87 - 90	109 - 112

## PARTE INFERIOR



b.)

a.)

c.)

### a.) Cintura

Mide alrededor de la parte más estrecha de la cintura, manteniendo la cinta horizontal.

### b.) Cadera

Manteniendo ambos pies juntos, mide alrededor de la parte más ancha de la cadera, manteniendo la cinta horizontal.

### c.) Tiro

Mide desde el tiro hasta la parte inferior de la pierna.

Talla / Sizes	Cintura / Waist (A)	Cadera / Hip (B)	Tiro / Inseam (C)
S	75 - 80	86 - 93	81,5
M	81 - 88	94 - 100	82
L	89 - 97	101 - 108	82,5
XL	98 - 105	109 - 116	83
2XL	106 - 112	117 - 122	83
3XL	113 - 120	123 - 131	83
4XL	121 - 130	132 - 139	83
5XL	131 - 139	140 - 147	83
2XL - 3XL	104 - 134	114 - 138	83,5

## PARTE INFERIOR



b.)

a.)

c.)

### a.) Cintura

Mide alrededor de la parte más estrecha de la cintura, manteniendo la cinta horizontal.

### b.) Cadera

Manteniendo ambos pies juntos, mide alrededor de la parte más ancha de la cadera, manteniendo la cinta horizontal.

### c.) Tiro

Mide desde el tiro hasta la parte inferior de la pierna.

Talla / Sizes	Cintura / Waist (A)	Cadera / Hip (B)	Tiro / Inseam (C)
S	69 - 73	91 - 95	78,5
M	74 - 78	96 - 101	79
L	79 - 83	102 - 108	79,5
XL	84 - 88	109 - 114	80
2XL	89 - 93	115 - 120	80
3XL	94 - 98	121 - 126	80
4XL	99 - 103	126 - 131	80
2XL - 3XL	87 - 90	109 - 112	80,5

## PARTE SUPERIOR E INFERIOR

Talla / Sizes	Edad / Years	Altura / Height	Pecho / Chest	Cintura / Waist	Cadera / Hip
6XS	4 - 5	100 - 108	55 - 57	54 - 55	60 - 62
5XS	5 - 6	109 - 117	58 - 61	56 - 57	63 - 65
4XS	7 - 8	118 - 128	62 - 66	58 - 60	66 - 68
3XS	9 - 10	129 - 140	67 - 72	61 - 64	69 - 74
2XS	11 - 12	141 - 152	73 - 79	65 - 68	75 - 80
XS	12 - 14	153 - 164	80 - 87	69 - 72	81 - 86

Nota: medidas en centímetros (cm)

# COMMITMENT TO SUSTAINABILITY

Caring for the planet cannot wait, which is why at Joma we have increased the number of sustainable models, techniques, and materials in the new 2026 collection. This reinforces our commitment to achieving a cleaner world and places us on par with our competitors in this type of initiative.

Sustainable materials such as recycled polyester and organic cotton in textiles, recycled rubber and leather in footwear. Dyes free from pesticides and chemicals.

- Implementation of a quality and environmental management system that complies with ISO standards.
- Kits made with recycled fabric.
- Biodegradable polybags.
- Elimination of plastic in packaging.
- Boxes made from recycled cardboard.
- Carbon footprint report.



# OFFICIAL JOMA STORES

The expansion of our stores is ongoing. We have more than 200 own stores and are present in over 40 countries through flagships, own stores, and outlets.

Through visual materials and displays, we ensure our products receive the recognition they deserve, standing out from the competition while always emphasizing their technical qualities.

**+200** EXPANSION THROUGH NEW  
COMPANY-OWNED AND FRANCHISED STORES



**+50** INTERNATIONAL CLUB STORES



# WHY CHOOSE JOMA?



## CUTTING-EDGE TECHNOLOGY

The incorporation of innovative technologies such as **Micro-Mesh System**, which enhances ventilation in high-sweat areas, and **Flatlock** flat seams that prevent chafing and improve comfort, maximize performance on the field.



## FABRIC QUALITY

Joma's football kits are crafted from cutting-edge technical fabrics that incorporate high-strength, elastic, and ergonomic fibers, promoting freedom of movement and enhancing performance in competition.



## SUSTAINABLE INNOVATIONS

Our jerseys are made from 100% recycled polyester, produced by transforming plastic waste into yarn. This process reduces CO<sub>2</sub> emissions by 75% compared to conventional production and eliminates the use of fossil resources such as petroleum.



## PERSONALIZED DESIGNS

Each unique garment reflects the colors, crests, and values of each team, maintaining the highest quality in finishing. Every design is tailored to the club's technical and visual needs, resulting in a 100% exclusive product.



## LOGISTICS CAPACITY

Joma has a robust international logistics capacity, capable of managing 30 million items per day and distributing to over 140 countries.



# FOOTBALL HISTORY

**1987**

Joma's football kits are crafted from cutting-edge technical fabrics that incorporate high-strength, elastic, and ergonomic fibers, promoting freedom of movement and enhancing performance in competition.

**1988**

Joma sponsors **Emilio Butragueño** (Real Madrid) and **Txiqui Beguiristáin** (FC Barcelona).

**1992**

Joma becomes the **sales leader** in football boots. At the 1992 Barcelona Olympic Games, Alfonso wins the **Gold Medal** with Spain.

**1996-1998**

Joma opens its subsidiary in Mexico in the city of Celaya. It sponsors **Atlético Celaya**, the local team where Emilio Bitragueño plays. Joma launches the campaign **'The Color in Football'** and revolutionizes the global football boot market. **Alfonso** wears white boots, **Morientes** surprises with red ones.

**2000-2006**

The Costa Rica National Team participates in the **2002 Korea and Japan World Cup**.

**Deportivo de la Coruña** wins the **Copa del Rey**. Both sponsored by Joma. The Joma **Sevilla F.C.** team is named **Best Team in the World** by the IFFHS after winning 2 UEFA Cups, 1 Spanish Super Cup, 1 European Super Cup, and 1 Copa del Rey. **Kanouté** signs his sponsorship with Joma.

**2021**

Villarreal CF is crowned champion of the **2021 UEFA Europa League** and plays its first UEFA Supercup, sponsored by Joma.

**2024**

Atalanta Bergamo is crowned champion of the **2024 UEFA Europa League** and plays its first UEFA Supercup, sponsored by Joma. The Joma teams of Romania and Ukraine compete in **EURO 2024**.

**2025**

Joma strengthens its presence on the global football stage with top-tier club partnerships and high-performance boots, trusted by professionals.

# SPONSORS



# TECHNOLOGY

## PERFORMANCE AND COMFORT

Absorbs impacts on natural and synthetic grass, delivers responsive energy return, and helps reduce muscle fatigue throughout the 90 minutes, even in demanding matches.



SCAN ME



TO LEARN MORE



## TRACTION AND CONTROL

The upper molds to the foot for a natural, distraction-free fit, while strategically placed studs provide explosive grip and total control on all pitch conditions.



## FIT AND SPEED

Ensures a glove-like lockdown that stabilizes the foot during sharp turns and explosive accelerations, while reducing weight and friction points to maximize speed and ball contact.



## ENGINEERED TEXTILE FOR TOTAL PERFORMANCE

Joma's football apparel delivers top-level performance with lightweight, breathable fabrics that ensure freedom of movement, moisture control, and durable ergonomic fits for maximum play.



Joma's football boots are designed and tested by professionals who demand precision, speed, and resilience. Developed in the Joma Lab and tested on elite pitches, every pair is engineered to adapt to the rhythm of the modern game. Because in football, every touch counts and so does every technology.



# TEAMWEAR LIFECYCLES

■ N.O.S



# TEAMWEAR COLLECTION





**VINTAGE ECO-RETRO**





## T-SHIRT

2027



## VINTAGE. ECO-RETRO



SR 105073. S / M / L / XL / 2XL / 3XL

JR 105073. 4 (6XS) / 6 (5XS) / 8 (4XS) / 10 (3XS) / 12 (2XS) / 14 (XS)

Jacquard  
100% Recycled  
polyester

Tejido efecto satinado con tecnología Micro-Mesh System situada en zonas de mayor sudoración. Diseño vintage de inspiración retro. Cuello tipo polo en rib. Puños en canalé.

*Satin-effect fabric with Micro-Mesh System technology in high perspiration areas. Vintage design inspired by retro style. Ribbed polo style collar. Ribbed cuffs.*



**111**  
BLACK/  
ANTHRACITE



**201**  
WHITE/  
BLACK



**251**  
LIGHT MELANGE/  
BLACK



**332**  
DARK NAVY



**352**  
SKY/  
WHITE



**452**  
GREEN MEDIUM/  
WHITE



**552**  
VIOLET/  
WHITE



**602**  
RED/  
WHITE



**603**  
RED/  
DARK NAVY



**702**  
ROYAL/  
WHITE



**882**  
ORANGE/  
WHITE



**907**  
YELLOW/  
ROYAL

## SHORT

2027



SR 104980. S / M / L / XL / 2XL / 3XL

JR 104980. 4 (6XS) / 6 (5XS) / 8 (4XS) / 10 (3XS) / 12 (2XS) / 14 (XS)

Jacquard  
100% Recycled  
polyester

Tejido efecto satinado. Diseño vintage de inspiración retro. Cintura elástica con cordón interior.

*Satin effect fabric. Vintage design with retro inspiration. Elastic waistband with internal drawstring.*

46 cm.  
size M



**100**  
BLACK



**200**  
WHITE



**331**  
DARK NAVY



**600**  
RED



**700**  
ROYAL

A HERITAGE DESIGN, REINVENTED BY JOMA 20 YEARS LATER



## LIGA PRO





## LIGA PRO

## TWO-PIECE SET

2026



SR 105103. S / M / L / XL / 2XL / 3XL

Jacquard  
100% Recycled  
polyester

Tejido transpirable 100% poliéster reciclado. Tecnología Micro-Mesh System en zonas de mayor sudoración. Short con cintura elástica y cordón interior.

*Breathable fabric made of 100% recycled polyester. Micro-Mesh System technology in high sweat areas. Shorts with elastic waistband and inner drawstring.*



**012**  
TURQUOISE/  
WHITE/  
DARK NAVY



**205**  
WHITE/  
BLACK/  
FUSIA



**326**  
DARK NAVY/  
WHITE/  
GREEN FLUOR



**342**  
DARK NAVY/  
WHITE/  
TURQUOISE



**426**  
GREEN FLUOR/  
WHITE/  
DARK NAVY



**501**  
FUSIA/  
WHITE/  
BLACK



# NEW AREA

## THREE-PIECE SET

2028



SR **105106.** S / M / L / XL / 2XL / 3XL

JR **105106.** 4 (6XS) / 6 (5XS) / 8 (4XS) / 10 (3XS) / 12 (2XS) / 14 (XS)

100% Polyester  
Interlock

Tejido técnico de alta durabilidad. Short con cintura elástica y cordón interior. Medias sin pie transpirables, elásticas y con refuerzo en canalé en la parte superior.

*High durability technical fabric. Shorts with elastic waistband and inner drawstring. Breathable, elastic footless socks with ribbed reinforcement at the top.*



**003**  
DARK WHITE



**030**  
PINK



**040**  
DARK PINK



**150**  
ANTHRACITE



**331**  
DARK NAVY



**480**  
GREEN FLUOR



**600**  
RED



**700**  
ROYAL

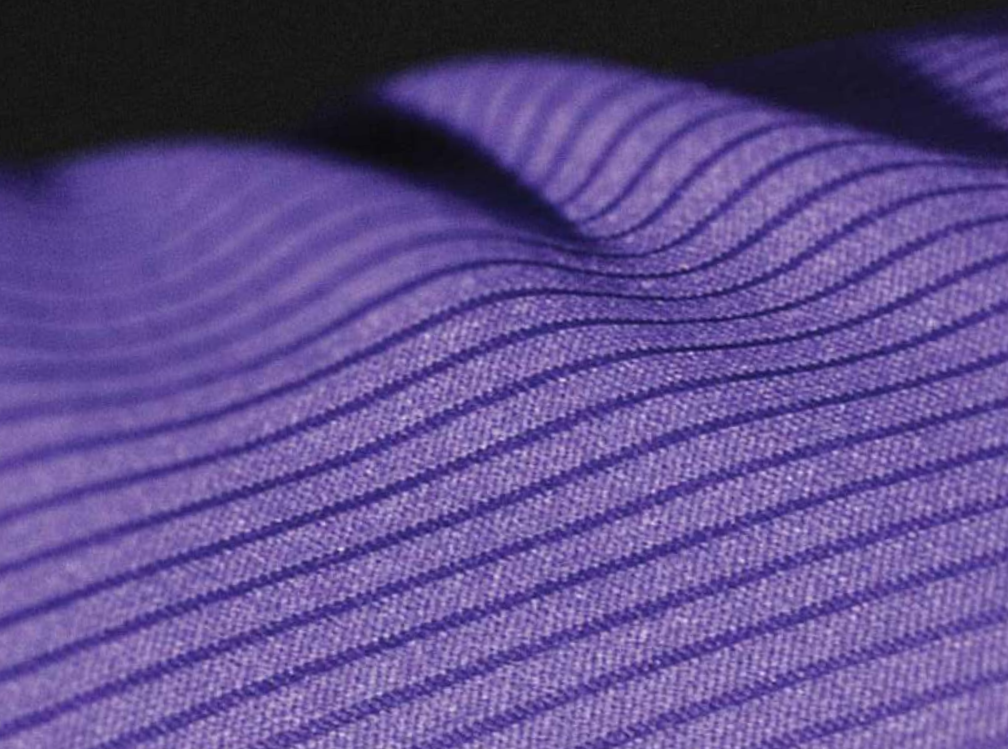


**922**  
YELLOW





# TOLETUM VI



## T-SHIRT

2027



SR **104372.** S / M / L / XL / 2XL / 3XL  
 JR **104372.** 4 (6XS) / 6 (5XS) / 8 (4XS) / 10 (3XS) / 12 (2XS) / 14 (XS)

Jacquard  
 100% Recycled  
 polyester

Tejido transpirable 100% poliéster reciclado. Tecnología Micro-Mesh System en zonas de mayor sudoración. Ajuste en rib en cuello y puños.  
*Breathable fabric 100% recycled polyester. Micro-Mesh System technology in areas of higher sweating. Ribbed fit on collar and cuffs.*



**100**  
 BLACK/  
 WHITE



**200**  
 WHITE/  
 BLACK



**331**  
 DARK NAVY/  
 WHITE



**450**  
 GREEN MEDIUM/  
 WHITE



**550**  
 VIOLET/  
 WHITE



**600**  
 RED/  
 WHITE



**671**  
 RUBY/  
 WHITE



**700**  
 ROYAL/  
 WHITE



**880**  
 ORANGE/  
 WHITE



**900**  
 YELLOW/  
 BLACK





# TOLETUM VII



## T-SHIRT 2028

 **SR 105021.** S / M / L / XL / 2XL / 3XL  
**SR 105021.** 4 (6XS) / 6 (5XS) / 8 (4XS) / 10 (3XS) / 12 (2XS) / 14 (XS)

100% Poliéster Interlock  
 100% Polyester Interlock

Tejido transpirable 100% poliéster reciclado. Tecnología Micro-Mesh System en zonas de mayor sudoración. Cuello y puños en rib. Mangas raglán y aberturas inferiores para mayor movilidad.  
*Breathable fabric 100% recycled polyester. Micro-Mesh System technology in areas with high moisture. Ribbed neck and cuffs. Raglan sleeves and lower openings for enhanced mobility.*



**602**  
RED/  
WHITE



**332**  
DARK NAVY/  
WHITE



**452**  
GREEN MEDIUM/  
WHITE



**102**  
BLACK/  
WHITE



**201**  
WHITE/  
BLACK



**552**  
VIOLET/  
WHITE



**672**  
RUBY/  
WHITE



**702**  
ROYAL/  
WHITE



**823**  
MOCK ORANGE/  
BLACK



**901**  
YELLOW/  
BLACK



# TOLETUM VII



## T-SHIRT 2028

**SR 903247.** S / M / L / XL / 2XL

100% Poliéster Interlock  
100% Polyester Interlock

Tejido transpirable 100% poliéster reciclado. Tecnología Micro-Mesh System en zonas de mayor sudoración. Cuello y puños en rib. Mangas raglán y aberturas inferiores para mayor movilidad.

*Breathable fabric 100% recycled polyester. Micro-Mesh System technology in areas of higher sweating. Ribbed collar and cuffs. Raglan sleeves and lower openings for greater mobility.*



**602**  
RED/  
WHITE



**102**  
BLACK/  
WHITE



**201**  
WHITE/  
BLACK



**332**  
DARK NAVY/  
WHITE



**452**  
GREEN MEDIUM/  
WHITE



**552**  
VIOLET/  
WHITE



**672**  
RUBY/  
WHITE



**702**  
ROYAL/  
WHITE



**823**  
MOCK ORANGE/  
BLACK



**901**  
YELLOW/  
BLACK



# HEROIC



## T-SHIRT

2028



SR 105135. S / M / L / XL / 2XL / 3XL

JR 105135. 4 (6XS) / 6 (5XS) / 8 (4XS) / 10 (3XS) / 12 (2XS) / 14 (XS)

100% Poliéster Interlock  
100% Polyester Interlock

Tejido cómodo y de alta durabilidad. Mangas raglán para mayor ajuste y libertad de movimiento. Cuello y puños en rib.

Comfortable and highly durable fabric. Raglan sleeves for better fit and freedom of movement. Ribbed collar and cuffs.



110

ANTHRACITE/  
BLACK



203

WHITE/  
DARK NAVY



331

DARK NAVY



471

JUNE BUG



601

RED/  
BLACK



680

RUBY



703

ROYAL/  
DARK NAVY



## SHORT

2028



SR 105368. S / M / L / XL / 2XL / 3XL

JR 105368. 4 (6XS) / 6 (5XS) / 8 (4XS) / 10 (3XS) / 12 (2XS) / 14 (XS)

100% Poliéster Interlock  
100% Polyester Interlock

Tejido cómodo y de alta durabilidad. Cintura elástica con cordón interior..

Comfortable and highly durable fabric. Stretch waistband with internal drawstring..



46 cm.  
size M

100  
BLACK



150  
ANTHRACITE

200  
WHITE



331  
DARK NAVY



471  
JUNE BUG



600  
RED



680  
RUBY



700  
ROYAL



# T-SHIRT

2028



# HEROIC



SR 903248.S / M / L / XL / 2XL

100% Poliéster Interlock  
100% Polyester Interlock

Tejido cómodo y de alta durabilidad. Mangas raglán para mayor ajuste y libertad de movimiento. Cuello y puños en rib.  
*Comfortable and highly durable fabric. Raglan sleeves for better fit and freedom of movement. Ribbed collar and cuffs.*



110

ANTHRACITE/  
BLACK



203

WHITE/  
DARK NAVY



331

DARK NAVY



471

JUNE BUG



601

RED/  
BLACK



680

RUBY



703

ROYAL/  
DARK NAVY



# SHORT

2028



SR 903249.S / M / L / XL / 2XL

100% Poliéster Interlock  
100% Polyester Interlock

Tejido cómodo y de alta durabilidad. Cintura elástica con cordón interior.  
*Comfortable and highly durable fabric. Elastic waistband with internal drawstring.*



46 cm.  
size M

100

BLACK



150

ANTHRACITE



200

WHITE



331

DARK NAVY



471

JUNE BUG



600

RED



680

RUBY



700

ROYAL



# PICASHO CITY



## T-SHIRT

2028

PERSONALIZATION  
MY DESIGN



SR 105115. S / M / L / XL / 2XL / 3XL

JR 105115. 4 (6XS) / 6 (5XS) / 8 (4XS) / 10 (3XS) / 12 (2XS) / 14 (XS)

Jacquard butterfly.  
92% polyester  
8% spandex

Tejido ultra ligero, elástico y transpirable gracias a la tecnología Micro-Mesh System. Cuello redondo en tejido base.

Ultra-light, stretchy, and breathable fabric thanks to the Micro-Mesh System technology. Crew neck made from base fabric.



013

TURQUOISE FLUOR/  
DARK NAVY



041

DARK ORANGE FLUOR/  
BLACK



102

BLACK/  
WHITE



451

GREEN MEDIUM/  
BLACK



602

RED/  
WHITE



609

RED/  
YELLOW



702

ROYAL/  
WHITE



901

YELLOW/  
BLACK



# PICASHO CITY



## T-SHIRT

2028

PERSONALIZATION  
MY DESIGN



SR 903126. S / M / L / XL / 2XL  
JR 903126. 12 (2XS) / 14 (XS)

Jacquard butterfly.  
92% polyester  
8% spandex

Tejido ultra ligero, elástico y transpirable gracias a la tecnología Micro-Mesh System. Cuello redondo en tejido base.  
*Technical fabric with jacquard finish for increased breathability. Round neckline made from base fabric.*



**013**  
TURQUOISE FLUOR/  
DARK NAVY



**041**  
DARK ORANGE FLUOR/  
BLACK



**102**  
BLACK/  
WHITE



**451**  
GREEN MEDIUM/  
BLACK



**602**  
RED/  
WHITE



**609**  
RED/  
YELLOW



**702**  
ROYAL/  
WHITE




**901**  
YELLOW/  
BLACK



# TIGER VIII



## T-SHIRT 2028

 **SR 105243.** S / M / L / XL / 2XL / 3XL  
**DR 105243.** 4 (6XS) / 6 (5XS) / 8 (4XS) / 10 (3XS) / 12 (2XS) / 14 (XS)

100% Poliéster Interlock  
 100% Polyester Interlock

Tejido técnico, cómodo y de alta durabilidad. Cuello a pico en rib y puños en canalé.  
*Technical fabric, comfortable, and highly durable. Ribbed V-neck collar and ribbed cuffs.*



**024**  
 GREEN FLUOR/  
 GREEN MEDIUM



**013**  
 TURQUOISE FLUOR/  
 DARK NAVY



**151**  
 ANTHRACITE/  
 BLACK



**601**  
 RED/  
 BLACK



**602**  
 RED/  
 WHITE



**801**  
 ORANGE/  
 BLACK



**701**  
 ROYAL/  
 BLACK



**702**  
 ROYAL/  
 WHITE



**901**  
 YELLOW/  
 BLACK



# INTER VI



## T-SHIRT

2028



**SR 105307.** S / M / L / XL / 2XL / 3XL

**JR 105307.** 4 (6XS) / 6 (5XS) / 8 (4XS) / 10 (3XS) / 12 (2XS) / 14 (XS)

100% Poliéster  
Interlock  
100% Polyester  
Interlock

Tejido cómodo y de alta durabilidad. Cuello a pico en tejido base.  
*Comfortable and highly durable fabric. V-neck in base fabric.*



**901**  
YELLOW/  
BLACK



**601**  
RED/  
BLACK



**602**  
RED/  
WHITE



**102**  
BLACK/  
WHITE



**452**  
GREEN MEDIUM/  
WHITE



**701**  
ROYAL/  
BLACK



**702**  
ROYAL/  
WHITE



# INTER CLASSIC



## SET N.O.S

Kit: short sleeve t-shirt / long sleeve t-shirt, shorts & socks

**SR 103248.** S / M / L / XL / 2XL / 3XL  
**JR 103248.** 4 (6XS) / 6 (5XS) / 8 (4XS) / 10 (3XS) / 12 (2XS) / 14 (XS)

100% Poliéster Interlock  
100% Polyester Interlock  
**SR 103248.**  
**JR 103248.**  
Kit short sleeve t-shirt, shorts & socks.

**SR 103280.** S / M / L / XL / 2XL / 3XL  
**JR 103280.** 4 (6XS) / 6 (5XS) / 8 (4XS) / 10 (3XS) / 12 (2XS) / 14 (XS)

**SR 103280.**  
**JR 103280.**  
Kit long sleeve t-shirt, short & socks.



**715**  
DARK BLUE/  
DARK RED



## T-SHIRT N.O.S

**SR 103249.** S / M / L / XL / 2XL / 3XL  
**JR 103249.** 4 (6XS) / 6 (5XS) / 8 (4XS) / 10 (3XS) / 12 (2XS) / 14 (XS)

100% Poliéster Interlock  
100% Polyester Interlock  
Camiseta de manga corta con cuello redondo. Incluye un diseño sublimado frontal a rayas. Logo J serigrafiado.  
Short sleeve round-neck t-shirt. Includes a sublimated striped design on the front. Silk-screen printed logo.



**702**  
ROYAL/  
WHITE



**201**  
WHITE/  
BLACK



**452**  
GREEN MEDIUM/  
WHITE



**601**  
RED/  
BLACK



**602**  
RED/  
WHITE



**609**  
RED/  
YELLOW



**701**  
ROYAL/  
BLACK



**901**  
YELLOW/  
BLACK

## LONG SLEEVE N.O.S

**SR 103250.** S / M / L / XL / 2XL / 3XL  
**JR 103250.** 4 (6XS) / 6 (5XS) / 8 (4XS) / 10 (3XS) / 12 (2XS) / 14 (XS)



**702**  
ROYAL/  
WHITE



**201**  
WHITE/  
BLACK



**452**  
GREEN MEDIUM/  
WHITE



**601**  
RED/  
BLACK



**602**  
RED/  
WHITE



**609**  
RED/  
YELLOW



**701**  
ROYAL/  
BLACK



**901**  
YELLOW/  
BLACK



# INTER V



T-SHIRT

2027



SR 104383. S / M / L / XL / 2XL / 3XL

JR 104383. 4 (6XS) / 6 (5XS) / 8 (4XS) / 10 (3XS) / 12 (2XS) / 14 (XS)

100% Poliéster Interlock

100% Polyester Interlock

Tejido cómodo y de alta durabilidad. Tecnología Micro-Mesh System en zonas de mayor sudoración. Cuello a pico y mangas raglán. Diseño sublimado.

Comfortable and highly durable fabric. Micro-Mesh System technology in areas of higher perspiration. V-neck and raglan sleeves. Sublimated design.



701 ROYAL/BLACK



602 RED/WHITE



452 GREEN MEDIUM/WHITE



702 ROYAL/WHITE



601 RED/BLACK



602 RED/WHITE



102 BLACK/WHITE



901 YELLOW/BLACK



# INTER IV



T-SHIRT

N.O.S



SR 103720. S / M / L / XL / 2XL / 3XL

JR 103720. 4 (6XS) / 6 (5XS) / 8 (4XS) / 10 (3XS) / 12 (2XS) / 14 (XS)

100% Polyester Interlock

Camiseta de manga corta tipo raglán para mayor libertad de movimiento. Cuello a pico en tejido base. Incluye mesh transpirable en las zonas de mayor sudoración. Diseño sublimado frontal a rayas. Logotipo Joma bordado.

Short-sleeved raglan shirt for greater freedom of movement. V-neck in base fabric. Includes breathable mesh in areas of greater perspiration. Sublimated striped design on the front. Embroidered Joma logo.



102 BLACK/WHITE



602 RED/WHITE



352 SKY/WHITE



451 GREEN MEDIUM/BLACK



452 GREEN MEDIUM/WHITE



601 RED/BLACK



602 RED/WHITE



701 ROYAL/BLACK



702 ROYAL/WHITE



901 YELLOW/BLACK



# EUROPA VI



## T-SHIRT

2027



SR **104375.** S / M / L / XL / 2XL / 3XL

DR **104375.** 4 (6XS) / 6 (5XS) / 8 (4XS) / 10 (3XS) / 12 (2XS) / 14 (XS)

100% Poliéster Interlock  
100% Polyester Interlock

Tejido cómodo y de alta durabilidad. Tecnología Micro-Mesh System en zonas de mayor sudoración. Cuello cruzado. Diseño sublimado.  
*Comfortable and highly durable fabric. Micro-Mesh System technology in areas of higher sweating. Crossed collar. Sublimated design.*



**452**  
GREEN MEDIUM/  
WHITE



**106**  
BLACK/  
RED



**201**  
WHITE/  
BLACK



**336**  
DARK NAVY/  
RED



**602**  
RED/  
WHITE



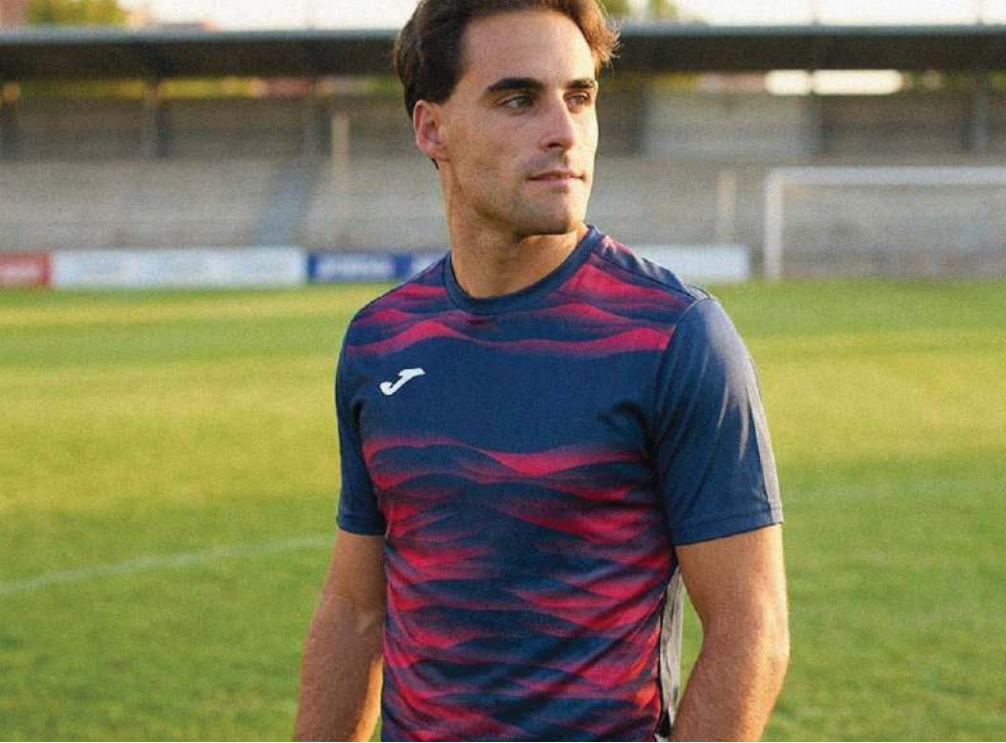
**702**  
ROYAL/  
WHITE



**903**  
YELLOW/  
DARK NAVY



# TIGER VII



## T-SHIRT

2027



SR **104378.** S / M / L / XL / 2XL / 3XL

JR **104378.** 4 (6XS) / 6 (5XS) / 8 (4XS) / 10 (3XS) / 12 (2XS) / 14 (XS)

100% Poliéster  
Interlock

100% Polyester  
Interlock

Tejido cómodo y de alta durabilidad. Tecnología Micro-Mesh System en zonas de mayor sudoración. Cuello cruzado. Diseño sublimado.

*Comfortable and highly durable fabric. Micro-Mesh System technology in areas of higher sweating. Crossed collar. Sublimated design.*



**452**  
GREEN MEDIUM/  
WHITE



**106**  
BLACK/  
RED



**201**  
WHITE/  
BLACK



**336**  
DARK NAVY/  
RED



**602**  
RED/  
WHITE



**702**  
ROYAL/  
WHITE



**903**  
YELLOW/  
DARK NAVY



SR **105164.** S / M / L / XL / 2XL / 3XL / 4XL

JR **105164.** 4 (6XS) / 6 (5XS) / 8 (4XS) / 10 (3XS) / 12 (2XS) / 14 (XS)

Polyester  
54% recycled polyester  
46% polyester

Tejido transpirable que integra fibras de poliéster reciclado. Acabado en jacquard para mayor transpirabilidad. Cuello redondo en tejido base. Mangas raglán.

Breathable fabric integrating recycled polyester fibers. Jacquard finish for increased breathability. Crew neck made from base fabric. Raglan sleeves.



**422**  
CABBAGE/  
BLACK/WHITE



**383**  
MEDIUM SKY/  
DARK NAVY/WHITE



**106**  
BLACK/  
RED/WHITE



**111**  
BLACK/  
NIMBUS CLOUD/WHITE



**203**  
WHITE/  
DARK NAVY/RED



**283**  
WHITE/DARK NAVY/  
TURQUOISE FLUOR



**321**  
DARK NAVY/YELLOW FLUOR/  
TURQUOISE FLUOR



**311**  
DARK NAVY/  
NIMBUS CLOUD/WHITE



**337**  
DARK NAVY/  
ROYAL/RED



**456**  
GREEN MEDIUM/  
RED/WHITE



**551**  
VIOLET/BLACK/  
PURPLE ROSE



**601**  
RED/  
BLACK/WHITE



**603**  
RED/GOLD/  
DARK NAVY



**683**  
RUBY/  
DARK NAVY/GOLD



**703**  
ROYAL/  
DARK NAVY/WHITE



**907**  
YELLOW/  
ROYAL/DARK NAVY



SR **105028.** S / M / L / XL / 2XL / 3XL

JR **105028.** 4 (6XS) / 6 (5XS) / 8 (4XS) / 10 (3XS) / 12 (2XS) / 14 (XS)

2029

Interlock  
100% Poliéster

Tejido cómodo y de alta durabilidad. Tecnología Micro-Mesh System en zonas de mayor sudoración. Cintura elástica con cordón interior.

Comfortable and highly durable fabric. Micro-Mesh System technology in areas with high moisture. Elastic waistband with inner drawcord.

46 cm.  
size M



**452**  
GREEN MEDIUM/WHITE



**450**  
GREEN MEDIUM



**100**  
BLACK



**102**  
BLACK/WHITE



**106**  
BLACK/RED



**108**  
BLACK/ORANGE



**109**  
BLACK/YELLOW



**200**  
WHITE



**206**  
WHITE/RED



**207**  
WHITE/ROYAL



**331**  
DARK NAVY



**332**  
DARK NAVY/WHITE



**336**  
DARK NAVY/RED



**552**  
VIOLET/WHITE



**600**  
RED



**602**  
RED/WHITE



**609**  
RED/YELLOW



**700**  
ROYAL



**702**  
ROYAL/WHITE



**709**  
ROYAL/YELLOW



**907**  
YELLOW/ROYAL



# CHAMPIONSHIP 20°

## T-SHIRT

2029



SR 903195. S / M / L / XL / 2XL

JR 903195. 12 (2XS) / 14 (XS)

Polyester  
54% recycled  
polyester  
46% polyester

Tejido transpirable que integra fibras de poliéster reciclado. Acabado en jacquard para mayor transpirabilidad. Cuello redondo en tejido base. Mangas raglán.

Breathable fabric integrating recycled polyester fibres. Jacquard finish for increased breathability. Round neck line in base fabric. Raglan sleeves.



422

CABBAGE/  
BLACK/WHITE



383

MEDIUM SKY/  
DARK NAVY/WHITE



106

BLACK/  
RED/WHITE



111

BLACK/  
NIMBUS CLOUD/WHITE



203

WHITE/  
DARK NAVY/RED



283

WHITE/DARK NAVY/  
TURQUOISE FLUOR



321

DARK NAVY/YELLOW FLUOR/  
TURQUOISE FLUOR



311

DARK NAVY/  
NIMBUS CLOUD/WHITE



337

DARK NAVY/  
ROYAL/RED



456

GREEN MEDIUM/  
RED/WHITE



551

VIOLET/BLACK/  
PURPLE ROSE



601

RED/  
BLACK/WHITE



603

RED/GOLD  
DARK NAVY



683

RUBY/  
DARK NAVY/GOLD



703

ROYAL/  
DARK NAVY/WHITE



907

YELLOW/  
ROYAL/DARK NAVY



SR 903030. S / M / L / XL / 2XL

JR 903030. 12 (2XS) / 14 (XS)

2029

Interlock  
100% Poliéster

Tejido cómodo y de alta durabilidad. Tecnología Micro-Mesh System en zonas de mayor sudoración. Cintura elástica con cordón interior.

Comfortable and highly durable fabric. Micro-Mesh System technology in high perspiration areas. Elastic waistband with internal drawstring.



35 cm.  
size M

452

GREEN MEDIUM/WHITE



450

GREEN MEDIUM



100

BLACK



102

BLACK/WHITE



106

BLACK/RED



108

BLACK/ORANGE



109

BLACK/YELLOW



200

WHITE



206

WHITE/RED



207

WHITE/ROYAL



331

DARK NAVY



332

DARK NAVY/WHITE



336

DARK NAVY/RED



552

VIOLET/WHITE



600

RED



602

RED/WHITE



609

RED/YELLOW



700

ROYAL



702

ROYAL/WHITE



709

ROYAL/YELLOW



907

YELLOW/ROYAL



# CHAMPIONSHIP VIII



## T-SHIRT

2028



SR 104263. S / M / L / XL / 2XL / 3XL / 4XL

JR 104263. 4 (6XS) / 6 (5XS) / 8 (4XS) / 10 (3XS) / 12 (2XS) / 14 (XS)

100% Poliéster Interlock

100% Polyester Interlock

Tejido cómodo y de alta durabilidad. Cuello redondo con covertape elástico interior para mayor ajuste. Sublimación en mangas.

Comfortable and highly durable fabric. Round neck with elastic covertape inside for a better fit. Sublimation on sleeves.



**010**  
TURQUOISE FLUOR/  
SKY



**020**  
GREEN FLUOR



**671**  
RUBY



**682**  
RUBY/  
SKY



**109**  
BLACK/  
YELLOW



**110**  
BLACK/  
ANTHRACITE



**200**  
WHITE



**206**  
WHITE/  
RED



**207**  
WHITE/  
ROYAL



**331**  
DARK NAVY



**336**  
DARK NAVY/  
RED



**339**  
DARK NAVY/  
YELLOW



**450**  
GREEN MEDIUM



**456**  
GREEN MEDIUM/  
RED



**474**  
KAKI/  
YELLOW FLUOR



**550**  
VIOLET



**600**  
RED



**609**  
RED/  
YELLOW



**880**  
ORANGE



**700**  
ROYAL



**709**  
ROYAL/  
YELLOW



**900**  
YELLOW



**904**  
YELLOW/  
GREEN MEDIUM



**907**  
YELLOW/  
ROYAL



# CHAMPIONSHIP VIII

## SUBLIMATION ON SLEEVES

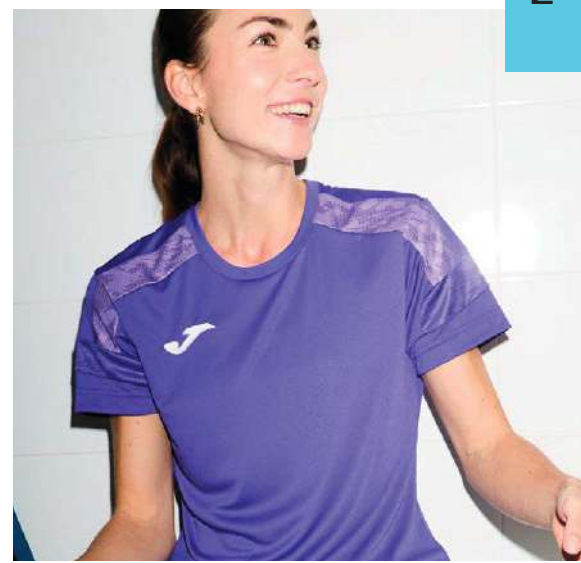
### T-SHIRT 2028



SR 902514. S / M / L / XL / 2XL  
JR 902514. 12 (2XS) / 14 (XS)

100% Poliéster Interlock  
100% Polyester Interlock

Tejido cómodo y de alta durabilidad. Cuello redondo con covertape elástico interior para mayor ajuste. Sublimación en mangas.  
*Comfortable and highly durable fabric. Round neck with elastic covertape inside for a better fit. Sublimation on sleeves.*



**010**  
TURQUOISE FLUOR/  
SKY



**020**  
GREEN FLUOR



**671**  
RUBY



**682**  
RUBY/  
SKY



**109**  
BLACK/  
YELLOW



**110**  
BLACK/  
ANTHRACITE



**200**  
WHITE



**206**  
WHITE/  
RED



**207**  
WHITE/  
ROYAL



**331**  
DARK NAVY



**336**  
DARK NAVY/  
RED



**339**  
DARK NAVY/  
YELLOW



**450**  
GREEN MEDIUM



**456**  
GREEN MEDIUM/  
RED



**474**  
KAKI/  
YELLOW FLUOR



**550**  
VIOLET



**600**  
RED



**609**  
RED/  
YELLOW



**880**  
ORANGE



**700**  
ROYAL



**709**  
ROYAL/  
YELLOW



**900**  
YELLOW



**904**  
YELLOW/  
GREEN MEDIUM



**907**  
YELLOW/  
ROYAL



# LIDER



SET

2027



SR 104285. S / M / L / XL / 2XL / 3XL

JR 104285. 4 (6XS) / 6 (5XS) / 8 (4XS) / 10 (3XS) / 12 (2XS) / 14 (XS)

100% Poliéster  
Interlock

100% Polyester  
Interlock

Tejido cómodo y de alta durabilidad. Tecnología Micro-Mesh System en zonas de mayor sudoración en ambas prendas. Short con cintura elástica ajustable.

Comfortable and highly durable fabric. Micro-Mesh System technology in areas of higher perspiration in both garments. Shorts with adjustable elastic waistband.



013

TURQUOISE FLUOR/  
DARK NAVY



063

YELLOW FLUOR/  
DARK NAVY



102

BLACK/  
WHITE



203

WHITE/  
DARK NAVY



206

WHITE/  
RED



207

WHITE/  
ROYAL



601

RED/  
BLACK



603

RED/  
DARK NAVY



332

DARK NAVY/  
WHITE



451

GREEN MEDIUM/  
BLACK



703

ROYAL/  
DARK NAVY



881

ORANGE/  
BLACK



901

YELLOW/  
BLACK



907

YELLOW/  
ROYAL





# LIDER

SET 2027

SR 902560. S / M / L / XL

100% Poliéster Interlock  
100% Polyester Interlock

Tejido cómodo y de alta durabilidad. Tecnología Micro-Mesh System en zonas de mayor sudoración en ambas prendas. Short con cintura elástica ajustable.  
*Comfortable and highly durable fabric. Micro-Mesh System technology in areas of higher perspiration in both garments. Shorts with adjustable elastic waistband.*



**013**  
TURQUOISE FLUOR/  
DARK NAVY



**063**  
YELLOW FLUOR/  
DARK NAVY



**102**  
BLACK/  
WHITE



**203**  
WHITE/  
DARK NAVY



**206**  
WHITE/  
RED



**207**  
WHITE/  
ROYAL



**601**  
RED/  
BLACK



**603**  
RED/  
DARK NAVY



**332**  
DARK NAVY/  
WHITE



**451**  
GREEN MEDIUM/  
BLACK



**703**  
ROYAL/  
DARK NAVY



**881**  
ORANGE/  
BLACK



**901**  
YELLOW/  
BLACK



**907**  
YELLOW/  
ROYAL



# WINNER IV



## T-SHIRT

2028



SR 105002. S / M / L / XL / 2XL / 3XL / 4XL

JR 105002. 4 (6XS) / 6 (5XS) / 8 (4XS) / 10 (3XS) / 12 (2XS) / 14 (XS)

Interlock  
100% Polyester

Tejido cómodo y de alta durabilidad. Paneles con tecnología Micro-Mesh System en zonas de mayor sudoración. Cuello redondo en tejido base.

Comfortable and highly durable fabric. Panels with Micro-Mesh System technology in areas of higher perspiration areas. Base fabric round neck.



**013**  
TURQUOISE FLUOR/  
BLACK



**701**  
ROYAL/  
BLACK



**702**  
ROYAL/  
WHITE



**709**  
ROYAL/  
YELLOW



**102**  
BLACK/  
WHITE



**106**  
BLACK/  
RED



**109**  
BLACK/  
YELLOW



**110**  
BLACK/  
ANTHRACITE



**601**  
RED/  
BLACK



**602**  
RED/  
WHITE



**603**  
RED/  
DARK NAVY



**201**  
WHITE/  
BLACK



**206**  
WHITE/  
RED



**207**  
WHITE/  
ROYAL



**253**  
GREY/  
DARK NAVY



**501**  
RASBERRY/  
BLACK



**336**  
DARK NAVY/  
RED



**341**  
DARK NAVY/  
GREY



**352**  
SKY/  
WHITE



**021**  
GREEN FLUOR/  
BLACK



**461**  
GREEN MEDIUM/  
GREY



**552**  
VIOLET/  
WHITE



**681**  
RUBY/  
GREY



**901**  
YELLOW/  
BLACK



**907**  
YELLOW/  
ROYAL



# PHOENIX II

SET

2028



SR 103124. S / M / L / XL / 2XL / 3XL

JR 103124. 2 (8XS) / 3 (7XS) / 4 (6XS) / 6 (5XS) / 8 (4XS) / 10 (3XS) / 12 (2XS) / 14 (XS)

100% Poliéster Interlock  
100% Polyester Interlock

Conjunto de dos piezas compuesto por camiseta de manga corta con una línea de contraste a color en la parte superior del pecho y pantalón corto con cintura elástica ajustable mediante cordón. Logo J serigrafiado.

Two-piece set consisting of short sleeve t-shirt with a contrasting coloured line on the upper chest and shorts with elasticated waist that can be adjusted with a draw cord. Printed J logo.



**709**  
ROYAL/  
YELLOW



NEW

**019**  
TURQUOISE FLUOR/  
YELLOW FLUOR



**021**  
FLUOR GREEN/  
BLACK



**061**  
FLUOR YELLOW/  
BLACK



**102**  
BLACK/  
WHITE



NEW

**106**  
BLACK/  
RED



NEW

**151**  
ANTHRACITE/  
BLACK



**206**  
WHITE/  
RED



**207**  
WHITE/  
ROYAL



**336**  
DARK NAVY/  
RED



NEW

**339**  
DARK NAVY/  
YELLOW



**383**  
SKY BLUE/  
DARK NAVY



**451**  
GREEN MEDIUM/  
BLACK



NEW

**551**  
VIOLET/  
BLACK



**601**  
RED/  
BLACK



**609**  
RED/YELLOW/  
BLACK



**703**  
ROYAL/  
DARK NAVY



**881**  
ORANGE/  
BLACK



NEW

**907**  
YELLOW/  
ROYAL



# ACADEMY III



## T-SHIRT

N.O.S



SR 101656. S / M / L / XL / 2XL - 3XL

JR 101656. 8XS - 7XS / 6XS - 5XS / 4XS - 3XS / 2XS / XS

100% Poliéster Interlock  
100% Polyester Interlock

Camiseta de manga corta con cuello redondo y con cortes a contraste en mangas. Logo J serigrafiado.

Short sleeve, round neck t-shirt with contrast sleeves. Screen printed J logo.

### SOLO MANGA CORTA / ONLY SHORT SLEEVE



013

TURQUOISE FLUOR/  
DARK NAVY



041

DARK ORANGE FLUOR/  
BLACK



061

YELLOW FLUOR/  
BLACK



## LONG SLEEVE

N.O.S



SR 101658.

JR 101658.

TODOS LOS COLORES DISPONIBLES EN MANGA LARGA.  
ALL COLOURS AVAILABLE IN LONG SLEEVE.



702

ROYAL/  
WHITE



702

ROYAL/  
WHITE



200

WHITE



206

WHITE/  
RED



207

WHITE/  
ROYAL



102

BLACK/  
WHITE



332

DARK NAVY/  
WHITE



452

GREEN MEDIUM/  
WHITE



601

RED/  
BLACK



602

RED/  
WHITE



881

ORANGE/  
BLACK



901

YELLOW/  
BLACK



## ACADEMY III

BREATHABLE AND DURABLE



T-SHIRT

N.O.S



SR 901141. S / M / L / XL / 2XL

JR 901141. 8 (4XS) - 10 (3XS) / 12 (2XS) / 14 (XS)

100% Poliéster  
Interlock100% Polyester  
Interlock

Camiseta de manga corta con cuello redondo y con cortes a contraste en mangas. Logo J serigrafiado.

*Short sleeve, round neck t-shirt with contrast sleeves. Screen printed J logo.***013**  
TURQUOISE FLUOR/  
DARK NAVY**041**  
DARK ORANGE FLUOR/  
BLACK**061**  
YELLOW FLUOR/  
BLACK**702**  
ROYAL/  
WHITE**200**  
WHITE**206**  
WHITE/  
RED**207**  
WHITE/  
ROYAL**102**  
BLACK/  
WHITE**332**  
DARK NAVY/  
WHITE**452**  
GREEN MEDIUM/  
WHITE**601**  
RED/  
BLACK**602**  
RED/  
WHITE**881**  
ORANGE/  
BLACK**901**  
YELLOW/  
BLACK



# PHOENIX



SET

N.O.S



SR 102741. S / M / L / XL / 2XL / 3XL

JR 102741. 2 (8XS) / 3 (7XS) / 4 (6XS) / 6 (5XS) / 8 (4XS) / 10 (3XS) / 12 (2XS) / 14 (XS)

100% Poliéster Interlock  
100% Polyester Interlock

Set de dos piezas compuesto por camiseta de manga corta con cortes de contraste a color en los hombros y el cuello, y un short con cintura elástica ajustable mediante cordón. Logo J en delantero bordado.

Two-piece set consisting of a short-sleeved T-shirt with contrasting color cuts on shoulders and neckline, and shorts with elastic waistband adjustable with a waist string. Embroidered J logo on the front.



**021**

GREEN FLUOR/  
BLACK



**013**

TURQUOISE FLUOR/  
DARK NAVY



**063**

YELLOW FLUOR/  
DARK NAVY



**102**

BLACK/  
WHITE



**151**

ANTHRACITE/  
BLACK



**203**

WHITE/  
DARK NAVY



**332**

DARK NAVY/  
WHITE



**451**

GREEN MEDIUM/  
BLACK



**601**

RED/  
BLACK



**603**

RED/  
DARK NAVY



**602**

RED/  
WHITE



**702**

DARK ROYAL/  
WHITE



**703**

DARK ROYAL/  
DARK NAVY



**881**

ORANGE/  
BLACK



**901**

YELLOW/  
BLACK



**907**

YELLOW/  
ROYAL






# PHOENIX

 SET

N.O.S


 **901709.** S / M / L / XL

100% Poliéster Interlock  
100% Polyester Interlock

Set de dos piezas compuesto por camiseta y short. La camiseta es de manga corta con cuello en pico para maximizar la libertad de movimientos y cortes de contraste a color en los hombros y el cuello. El short está confeccionado con cintura elástica ajustable mediante cordón. No incluye bolsillos. Logo J en delantero bordado.

*Two-piece set consisting of T-shirt and shorts. The T-shirt has short sleeves with V-neck to maximize freedom of movement and contrasting color cuts on the shoulders and neck. The shorts are made with an elastic waistband adjustable with a waist string. Pockets not included. Embroidered J logo on the front.*

**021**GREEN FLUOR/  
BLACK**013**TURQUOISE FLUOR/  
DARK NAVY**063**YELLOW FLUOR/  
DARK NAVY**102**BLACK/  
WHITE**151**ANTHRACITE/  
BLACK**203**WHITE/  
DARK NAVY**332**DARK NAVY/  
WHITE**451**GREEN MEDIUM/  
BLACK**601**RED/  
BLACK**603**RED/  
DARK NAVY**602**RED/  
WHITE**702**DARK ROYAL/  
WHITE**703**DARK ROYAL/  
DARK NAVY**881**ORANGE/  
BLACK**901**YELLOW/  
BLACK**907**YELLOW/  
ROYAL



# PRO-SHORT



SHORT

N.O.S



SR 103542. S / M / L / XL / 2XL / 3XL

Microfibra  
100% Poliéster  
Microfiber  
100% Polyester

Pantalón corto con cintura elástica ajustable mediante cordón. No incluye bolsillos. Con aberturas en el lateral del bajo para facilitar la libertad de movimiento. Elaborado con tejido cómodo, ligero y transpirable. Logotipo Joma bordado.

Shorts with an adjustable elastic waistband with drawstring. Does not include pockets. With openings on the side of the hem facilitating freedom of movement. Made with comfortable, lightweight and breathable fabric. Embroidered Joma logo.

48 cm.  
size M



600  
RED



100  
BLACK



200  
WHITE



331  
DARK NAVY



450  
GREEN MEDIUM



700  
ROYAL



# GLASGOW II



SHORT

2027



SR 104321. S / M / L / XL / 2XL / 3XL

JR 104321. 4 (6XS) / 6 (5XS) / 8 (4XS) / 10 (3XS) / 12 (2XS) / 14 (XS)

100% Polyester  
Interlock  
Mesh 88% Polyester  
12% Spandex

Tejido cómodo y de alta durabilidad. Tecnología Micro-Mesh System en los laterales. Cintura elástica ajustable.

Comfortable and highly durable fabric. Micro-Mesh System technology on the sides. Adjustable elastic waistband.

46 cm.  
size M



452  
GREEN MEDIUM/  
WHITE



102  
BLACK/  
WHITE



106  
BLACK/  
RED



109  
BLACK/  
YELLOW



206  
WHITE/  
RED



207  
WHITE/  
ROYAL



332  
DARK NAVY/  
WHITE



602  
RED/  
WHITE



702  
ROYAL/  
WHITE



709  
ROYAL/  
YELLOW





# HEROIC

SHORT

2028



SR **105368.** S / M / L / XL / 2XL / 3XL

JR **105368.** 4 (6XS) / 6 (5XS) / 8 (4XS) / 10 (3XS) / 12 (2XS) / 14 (XS)

100% Poliéster Interlock  
100% Polyester Interlock

Tejido cómodo y de alta durabilidad. Cintura elástica con cordón interior. Bolsillo interior en mesh.  
*Comfortable and highly durable fabric. Stretch waistband with internal drawstring. Interior mesh pocket.*



46 cm.  
size M



**100**  
BLACK



**331**  
DARK NAVY



**150**  
ANTHRACITE



**200**  
WHITE



**331**  
DARK NAVY



**471**  
JUNE BUG



**600**  
RED



**680**  
RUBY



**700**  
ROYAL



SR **903249.** S / M / L / XL / 2XL

46 cm.  
size M



**100**  
BLACK



**331**  
DARK NAVY



**150**  
ANTHRACITE



**200**  
WHITE



**331**  
DARK NAVY



**471**  
JUNE BUG



**600**  
RED



**680**  
RUBY



**700**  
ROYAL



# TOKIO II



SHORT

2029



SR 105028. S / M / L / XL / 2XL / 3XL

JR 105028. 4 (6XS) / 6 (5XS) / 8 (4XS) / 10 (3XS) / 12 (2XS) / 14 (XS)



100% Polyester Interlock

Pantalón corto con cintura elástica ajustable mediante cordón. No incluye bolsillos. Elaborado con tejido cómodo, resistente y transpirable, al que se han añadidos detalles en contraste a color. Logotipo Joma bordado.

*Shorts with an adjustable elastic waistband with drawstring. Does not include pockets. Made with comfortable, durable and breathable fabric, contrast color details have been added. Joma logo embroidered.*

**452**

GREEN MEDIUM/WHITE



**450**

GREEN MEDIUM



**200**

WHITE



**206**

WHITE/RED



**207**

WHITE/ROYAL



**907**

YELLOW/ROYAL



**331**

DARK NAVY



**332**

DARK NAVY/WHITE



**336**

DARK NAVY/RED



**552**

VIOLET/WHITE



**600**

RED



**602**

RED/WHITE



**609**

RED/YELLOW



**700**

ROYAL



**702**

ROYAL/WHITE



**709**

ROYAL/YELLOW



**109**

BLACK/YELLOW



**100**

BLACK



**102**

BLACK/WHITE



**106**

BLACK/RED



**108**

BLACK/ORANGE





# TOKIO II

SHORT 2029

**SR 903030.S / M / L / XL / 2XL**  
**JR 903030.12 (2XS) / 14 (XS)**

100% Polyester Interlock

Pantalón corto con cintura elástica ajustable mediante cordón. No incluye bolsillos. Elaborado con tejido cómodo, resistente y transpirable, al que se han añadidos detalles en contraste a color. Logotipo Joma bordado.

*Shorts with an adjustable elastic waistband with drawstring. Does not include pockets. Made with comfortable, durable and breathable fabric, contrast color details have been added. Joma logo embroidered.*



**452**  
GREEN MEDIUM/WHITE



**450**  
GREEN MEDIUM



**200**  
WHITE



**206**  
WHITE/RED



**207**  
WHITE/ROYAL



**907**  
YELLOW/ROYAL



**331**  
DARK NAVY



**332**  
DARK NAVY/WHITE



**336**  
DARK NAVY/RED



**552**  
VIOLET/WHITE



**600**  
RED



**602**  
RED/WHITE



**609**  
RED/YELLOW



**700**  
ROYAL



**702**  
ROYAL/WHITE



**709**  
ROYAL/YELLOW



**100**  
BLACK



**102**  
BLACK/WHITE



**106**  
BLACK/RED



**108**  
BLACK/ORANGE



**109**  
BLACK/YELLOW



# MAXI



SHORT

N.O.S



SR 101657. S / M / L / XL / 2XL - 3XL

JR 101657. 2 (8XS) - 3 (7XS) / 4 (6XS) - 6 (5XS) / 8 (4XS) - 10 (3XS) / 12 (2XS) / 14 (XS)

100% Polyester Interlock

Pantalón corto con corte en laterales a contraste. Cuenta con cintura ajustable con elástico y cordón. Logo J serigrafiado.

Shorts with contrast side panels. Elasticated waistband with adjustable drawstring. Screen printed J logo.



SR 901142. S / M / L / XL / 2XL

JR 901142. 8 (4XS) - 10 (3XS) / 12 (2XS) / 14 (XS)





## NOBEL

SHORT

N.O.S.



SR 100053. S / M / L / XL / 2XL - 3XL

JR 100053. 2 (8XS) - 3 (7XS) / 4 (6XS) - 6 (5XS) / 8 (4XS) - 10 (3XS) / 12 (2XS) / 14 (XS)

100% Polyester  
InterlockShorts con cintura elástica ajustable con cordón.  
*Shorts with an adjustable elastic drawstring waist.*

## TREVISO

SHORT

N.O.S.



SR 100822. S / M / L / XL / 2XL - 3XL

JR 100822. 4 (6XS) - 6 (5XS) / 8 (4XS) - 10 (3XS) / 12 (2XS) / 14 (XS)

100% Polyester  
InterlockShorts con cintura elástica ajustable con cordón.  
*Shorts with an adjustable elastic drawstring waist.*

## PARIS II

SHORT

N.O.S.



SR 900282. S / M / L / XL / 2XL

JR 900282. 12 (2XS) / 14 (XS)

100% Polyester  
InterlockPantalón corto con abertura lateral para un mejor ajuste. La cintura es elástica con cordón para un óptimo ajuste.  
*Shorts with side openings for a better adjustment. Adjustable elastic drawstring waist.*



# PROFESIONAL III



## SOCKS

PACK 4

401717.

S / M / L  
35-38 / 39-42 / 43-46

90% Poliamida  
10% Elastan  
90% Polyamide  
10% Elastane

Tejido elástico y resistente, capaz de evacuar la humedad rápidamente. Paneles transpirables. Refuerzo elástico de compresión en el arco y en el tobillo.  
*Elastic and resistant fabric, capable of quickly wicking away moisture. Breathable panels. Elastic compression reinforcement in the arch and ankle.*



**102**  
BLACK/  
WHITE



**332**  
DARK NAVY/  
WHITE



**201**  
WHITE/  
BLACK



**452**  
GREEN MEDIUM/  
WHITE



**602**  
RED/  
WHITE



**702**  
ROYAL/  
WHITE



**901**  
YELLOW/  
BLACK



# PROFESIONAL III

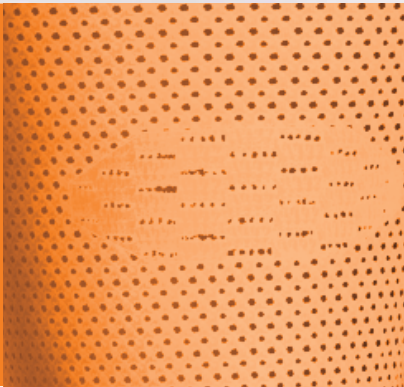
## SOCKS

**PACK 12**
**401720.** S / M / L  
35-38 / 39-42 / 43-46

90% Poliamida  
10% Elastan  
90% Polyamide  
10% Elastane

Medias sin pie. Tejido elástico y resistente, capaz de evacuar la humedad rápidamente. Refuerzo elástico superior e inferior.

Footless socks. Elastic and resistant fabric, capable of quickly wicking away moisture. Elastic reinforcement at the top and bottom.


**010**  
TURQUOISE  
FLUOR

**100**  
BLACK

**200**  
WHITE

**331**  
DARK NAVY

**450**  
GREEN  
MEDIUM

**600**  
RED

**700**  
ROYAL

**880**  
ORANGE

**900**  
YELLOW


# PROFESIONAL II

## SOCKS

**PACK 4**
**400392.** S / M / L  
35-38 / 39-42 / 43-46

60% Polyamide  
20% Cotton  
15% Polyester  
5% Elastane

Medias diseñadas en bicolor y logotipo en contraste. Logo J jacquard.

Two-tone socks and contrasting logo. J jacquard logo.


**100**  
BLACK/  
WHITE

**331**  
DARK NAVY/  
WHITE

**600**  
RED/  
WHITE

**450**  
GREEN MEDIUM/  
WHITE

**700**  
ROYAL/  
WHITE

**200**  
WHITE/  
BLACK

**900**  
YELLOW/  
ROYAL



# PREMIER II

## SOCKS

PACK 4

400897.

S / M / L  
35-38 / 39-42 / 43-46

90% Polyamide  
10% Elastane

Medias altas Premier II con diseño de rayas horizontal. Confeccionados en tejido ligero, transpirable y flexible que brinda el mayor frescor, sequedad y confortabilidad al deportista. Logo J jacquard.

*Premier II high socks with a horizontal striped design. Made of lightweight, breathable and flexible fabric providing greater coolness, dryness and comfort to the athlete. Includes ribbed fabric to prevent slipping during sports. J jacquard logo.*



**102**  
BLACK/  
WHITE



**201**  
WHITE/  
BLACK



**901**  
YELLOW/  
BLACK



**332**  
DARK NAVY/  
WHITE



**451**  
GREEN MEDIUM/  
BLACK



**452**  
GREEN MEDIUM/  
WHITE



**601**  
RED/  
BLACK



**602**  
RED/  
WHITE



**701**  
ROYAL/  
BLACK



**702**  
ROYAL/  
WHITE

## HIGH SOCKS WITHOUT FOOT

PACK 4

400898.

S / M / L  
35-38 / 39-42 / 43-46

90% Polyamide  
10% Elastane

Medias altas sin pie Premier II con diseño de rayas horizontal. Confeccionados en tejido ligero, transpirable y flexible que brinda el mayor frescor, sequedad y confortabilidad al deportista. Logo J jacquard.

*Premier II high socks without bottom with a horizontal striped design. Made of lightweight, breathable and flexible fabric that provides greater coolness, dryness and comfort to the athlete. Includes rib fabric to prevent slipping during sports. J jacquard logo.*



**102**  
BLACK/  
WHITE



**201**  
WHITE/  
BLACK



**332**  
DARK NAVY/  
WHITE



**901**  
YELLOW/  
BLACK



**451**  
GREEN MEDIUM/  
BLACK



**452**  
GREEN MEDIUM/  
WHITE



**601**  
RED/  
BLACK



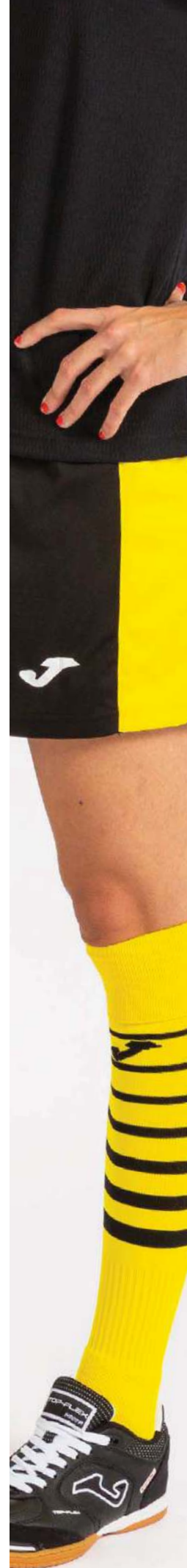
**602**  
RED/  
WHITE



**701**  
ROYAL/  
BLACK



**702**  
ROYAL/  
WHITE





## CALCIO 24

SOCKS

PACK 4

400022.

S / M / L  
35-38 / 39-42 / 43-4690% Polyamide  
10% ElastaneMedias diseñadas con la vuelta superior a contraste. Ajuste óptimo. Logo J jacquard.  
*Knee socks designed with upper fold in contrasting colour. Optimal fit. J jacquard logo.***100**  
BLACK/  
WHITE**200**  
WHITE/  
BLACK**207**  
WHITE/  
ROYAL**336**  
DARK NAVY/  
RED**339**  
DARK NAVY/  
YELLOW**450**  
GREEN MEDIUM/  
WHITE**602**  
RED/  
WHITE**609**  
RED/  
YELLOW**700**  
ROYAL/  
WHITE**900**  
YELLOW/  
ROYAL**901**  
YELLOW/  
BLACK

## ZEBRA II

SOCKS

PACK 4

400378.

S / M / L  
35-38 / 39-42 / 43-46Socks  
90% Polyamide  
10% ElastaneMedias diseñadas en listado horizontal con la mezcla de dos colores. Ajuste óptimo. Logo J jacquard.  
*Knee socks designed in a horizontal direction mixing two colours. Optimal fit. J jacquard logo.***102**  
BLACK/  
WHITE**106**  
BLACK/  
RED**109**  
BLACK/  
YELLOW**452**  
GREEN MEDIUM/  
WHITE**602**  
RED/  
WHITE**702**  
ROYAL/  
WHITE

## CLASSIC-3

SOCKS

PACK 20

400194.

S / M / L  
35-38 / 39-42 / 43-4690% Polyester  
10% ElastaneMedias que incorpora el logo en la puntera. Ajuste óptimo. Logo joma en jacquard.  
*Knee socks incorporating a logo on the toe area. Optimal fit. Joma jacquard logo.***100**  
BLACK**200**  
WHITE**331**  
DARK NAVY**450**  
GREEN MEDIUM**600**  
RED**700**  
ROYAL**900**  
YELLOW



# LEG II



## HIGH SOCKS WITHOUT FOOT

PACK 12

401533.

S / M / L  
35-38 / 39-42 / 43-46

90% Polyamide  
10% Elastane

Medias sin pie elaboradas con tejido elástico y transpirable. Incorporan refuerzo en canalé en la parte superior, inferior y en la zona del tobillo para conseguir el máximo ajuste. Logo J en jacquard.

*Footless socks made of stretchy and breathable fabric. They incorporate ribbed reinforcement on the top, bottom, and ankle area to achieve maximum fit. J jacquard logo.*



**900**  
YELLOW



**880**  
ORANGE



**700**  
ROYAL



**671**  
BURGUNDY



**010**  
TURQUOISE FLUOR



**020**  
GREEN FLUOR



**030**  
PINK FLUOR



**060**  
YELLOW FLUOR



**100**  
BLACK



**550**  
VIOLET



**150**  
ANTHRACITE



**200**  
WHITE



**331**  
DARK NAVY



**350**  
SKY



**450**  
GREEN MEDIUM



**600**  
RED



## SOCKS

PACK 4

# CLASSIC-2

401964.

XS / S / M / L  
31-34 / 35-38 / 39-42 / 43-46

90% Polyamide  
10% Elastane

Media que se distingue por situar el logo en la parte elástica, justo por encima del tobillo. Ajuste óptimo. Logo joma en jacquard.

*Knee socks distinguished the location of the logo on the elastic part, just above the ankle. Optimal fit. Joma jacquard logo.*



**010**  
TURQUOISE FLUOR



**020**  
GREEN FLUOR



**030**  
PINK FLUOR



**060**  
YELLOW FLUOR



**100**  
BLACK



**150**  
ANTHRACITE



**200**  
WHITE



**331**  
DARK NAVY



**350**  
SKY



**450**  
GREEN MEDIUM



**550**  
VIOLET



**600**  
RED



**671**  
BURGUNDY



**700**  
ROYAL



**880**  
ORANGE



**900**  
YELLOW



## GOALKEEPER





# ZAMORA XI

GK, THREE-PIECE SET

2028



SR **105196.** S / M / L / XL / 2XL / 3XL

JR **105196.** 4 (6XS) / 6 (5XS) / 8 (4XS) / 10 (3XS) / 12 (2XS) / 14 (XS)

100% Polyester  
Interlock

Mesh 88% Polyester  
12% Spandex

Tejido cómodo y de alta durabilidad. Tecnología Micro-Mesh System en zonas de mayor sudoración. Short con cintura elástica y cordón interior. Medias transpirables, elásticas y con refuerzo en canalé en la parte superior.

*Comfortable and highly durable fabric. Micro-Mesh System technology in areas of sweat areas. Shorts with elastic waistband and inner drawstring. Breathable, elastic socks with ribbed reinforcement at the top.*



**017**

TURQOISE FLUOR/  
TURKISH SEA



**603**

RED/  
DARK NAVY



**024**

GREEN FLUOR/  
CADMIUN GREEN



**050**

ORANGE/  
GARNET



**065**

YELLOW FLUOR/  
ROSE VIOLET



**111**

BLACK/  
SILVER



**572**

AMARANTH PURPLE/  
WHISPER WHITE



**357**

ICE WATER/  
TURKISH SEA





# WINNER



GK, TWO-PIECE SET

N.O.S.

SR **102858.** S / M / L / XL / 2XL / 3XLJR **102858.** 4 (6XS) / 6 (5XS) / 8 (4XS) / 10 (3XS) / 12 (2XS) / 14 (XS)100% Polyester  
Interlock

Set de dos piezas compuesto por camiseta y short. La camiseta es de manga larga y el short está confeccionado con cintura elástica ajustable mediante cordón. No incluye bolsillos.

*Two-piece set consisting of T-shirt and shorts. The T-shirt has long sleeves and the shorts are made with an elastic waistband adjustable with a waist string. Pockets not included.***601**RED/  
BLACK**013**TURQUOISE FLUOR/  
DARK NAVY**021**GREEN FLUOR/  
BLACK**031**PINK FLUOR/  
BLACK**102**BLACK/  
WHITE**117**BLACK/  
GREEN FLUOR**881**ORANGE/  
BLACK**063**YELLOW FLUOR/  
DARK NAVY



# PROTEC



## ARM PROTECTOR

N.O.S.

SR 400094. S / M / L

90% Polyester  
10% Elastane

Protector para porteros en la zona de los brazos que incluye acolchado en los codos para proteger de impactos. Incorpora la tecnología Micro-Mesh en el antebrazo para favorecer la transpiración.

*Goalkeeper arm protector, includes elbow padding to protect from impact. Includes Micro-Mesh technology in the forearm to enhance breathability.*



Acolchado  
Padding

100  
BLACK



Acolchado  
Padding

100  
BLACK



## T-SHIRT PROTEC

N.O.S.



SR 100009. S - M / L - XL

JR 100009. 8 - 10 / 12 - 14

4XS-3XS / 2XS-XS

90% Poliéster  
10% Elastane

Camiseta de portero diseñada con cuello redondo que incluye protecciones en los codos y hombros para absorber los impactos sin reducir la movilidad.

*Goalkeeper shirt designed with a rounded collar which includes protections on the elbows and shoulders to absorb impact without reducing mobility.*



## LONG GOALKEEPER PANTS PROTEC

SR 105348. S / M / L / XL / 2XL

JR 105348. 6 / 8 / 10 / 12 / 14

5XS / 4XS / 3XS / 2XS / XS

100% Polyester

Pantalón largo para porteros que incluye acolchado en las rodillas y cadera para proteger de impactos. Cintura elástica ajustable con cordón.

*Long goalkeeper pants, includes knee and hip padding to protect from impact. Adjustable elastic drawstring waist.*



Acolchado  
Padding



## SHORTS GOALKEEPER PROTEC

SR 105349. S / M / L / XL / 2XL

JR 105349. 6 / 8 / 10 / 12 / 14

5XS / 4XS / 3XS / 2XS / XS

100% Polyester

Pantalón corto para portero que incluye acolchado en cadera para absorber los impactos. Tiene aberturas laterales para favorecer los movimientos. Cintura elástica ajustable con cordón.

*Goalkeeper shorts including padding at the hip to absorb impact. They have side slits to assist movement. Adjustable elastic drawstring waist.*



48 cm.  
size M

Acolchado  
Padding

100  
BLACK



## SHORTS GOALKEEPER PROTEC



SR 100010. S - M / L - XL

JR 100010. 8 - 10 / 12 - 14

4XS-3XS / 2XS-XS

90% Poliéster  
10% Elastane

Pantalón de portero que incluye protección en los laterales para absorber los impactos sin reducir la movilidad.

*Goalkeeper pants including side protection to absorb impact without reducing mobility.*



40 cm.  
size M

Acolchado  
Padding

100  
BLACK



# BASKETBALL





# FOUR



## BASKET SET

2027



SR 104371. S / M / L / XL / 2XL / 3XL / 4XL

SR 104371. 4 (6XS) / 6 (5XS) / 8 (4XS) / 10 (3XS) / 12 (2XS) / 14 (XS)

Jacquard  
92% Polyester  
8% Spandex

Tejido cómodo y de alta durabilidad. Camiseta sin mangas con tecnología Micro-Mesh System en zonas de mayor sudoración. Short con cintura elástica ajustable.

Comfortable and highly durable fabric. Sleeveless shirt with Micro-Mesh System technology in areas of increased sweating. Shorts with adjustable elastic waistband.



51 cm.  
size M

201

WHITE/BLACK



013

TURQUOISE FLUOR/  
DARK NAVY



102

BLACK/WHITE



452

GREEN MEDIUM/WHITE



602

RED/WHITE



702

ROYAL/WHITE



## OLIMPIA BASKET

## BASKET SET

N.O.S.



SR 103840. S / M / L / XL / 2XL / 3XL / 4XL

JR 103840. 6 (5XS) / 8 (4XS) / 10 (3XS) / 12 (2XS) / 14 (XS)

100% Poliéster  
Interlock  
100% Polyester  
Interlock

Set de baloncesto compuesto por camiseta y short. Parte superior sin mangas, con cuello a pico y tecnología Micro-Mesh System en la espalda. Parte inferior con cinturilla elástica ajustable. Elaboración con tejido ligero y elástico. Logotipo Joma en printing.

*Basketball set composed of a shirt and shorts. Sleeveless top with a V-neck and Micro-Mesh System technology on the back. Bottom with adjustable elastic waistband. Made with lightweight and elastic fabric. Joma logo in printing.*

53 cm.  
size M**200**

WHITE

**251**

LIGHT MELANGE

**331**

DARK NAVY

**100**

BLACK

**450**

GREEN MEDIUM

**600**

RED

**700**

ROYAL





# LIDER

## BASKET SET

2027



**SR 104287.** S / M / L / XL / 2XL / 3XL / 4XL / 5XL

**JR 104287.** 4 (6XS) / 6 (5XS) / 8 (4XS) / 10 (3XS) / 12 (2XS) / 14 (XS)

100% Polyester  
Interlock

Tejido cómodo y de alta durabilidad. Tecnología Micro-Mesh System en zonas de mayor sudoración. Camiseta sin mangas con cuello redondo. Short con cintura elástica ajustable.

*Comfortable and highly durable fabric. Micro-Mesh System technology in areas of higher perspiration. Sleeveless round neck t-shirt. Shorts with adjustable elastic waistband.*



51 cm.  
size M



**602**

RED/  
WHITE



**013**

TURQUOISE FLUOR/  
DARK NAVY



**063**

YELLOW FLUOR/  
DARK NAVY



**102**

BLACK/  
WHITE



**206**

WHITE/  
RED



**332**

DARK NAVY/  
WHITE



**452**

GREEN MEDIUM/  
WHITE



**702**

ROYAL/  
WHITE



**907**

YELLOW/  
ROYAL



# LIDER

## BASKET SET WOMAN

2027



SR 902561. S / M / L / XL / 2XL

JR 902561. 12 (2XS) / 14 (XS)

100% Poliéster Interlock  
100% Polyester Interlock

Tejido cómodo y de alta durabilidad. Tecnología Micro-Mesh System en zonas de mayor sudoración. Camiseta sin mangas con cuello redondo. Short con cintura elástica ajustable.

*Comfortable and highly durable fabric. Micro-Mesh System technology in areas of higher perspiration. Sleeveless round neck t-shirt. Shorts with adjustable elastic waistband.*



46 cm.  
size M



**602**  
RED/  
WHITE



**013**  
TURQUOISE FLUOR/  
DARK NAVY



**063**  
YELLOW FLUOR/  
DARK NAVY



**102**  
BLACK  
WHITE



**206**  
WHITE/  
RED



**332**  
DARK NAVY/  
WHITE



**452**  
GREEN MEDIUM/  
WHITE



**702**  
ROYAL/  
WHITE



**907**  
YELLOW/  
ROYAL



# PHOENIX II



## SLEEVELESS

2028



SB 105197. S / M / L / XL / 2XL / 3XL / 4XL

JR 105197. 4 (6XS) / 6 (5XS) / 8 (4XS) / 10 (3XS) / 12 (2XS) / 14 (XS)

100% Poliéster Interlock  
100% Polyester Interlock

Tejido cómodo y de alta durabilidad. Cuello redondo en tejido base.  
*Comfortable and highly durable fabric. Crew neck in base fabric.*



**102**  
BLACK/  
WHITE



**201**  
WHITE/  
BLACK



**336**  
NAVY/  
RED



**339**  
DARK NAVY/  
YELLOW



**451**  
GREEN MEDIUM/  
BLACK



**601**  
RED/  
BLACK



**703**  
ROYAL/  
DARK NAVY



**881**  
ORANGE/  
BLACK



**907**  
YELLOW/  
ROYAL



## PHOENIX II

## BASKETBALL SHORTS

2028



SR 105335. S / M / L / XL / 2XL / 3XL / 4XL

JR 105335. 4 (6XS) / 6 (5XS) / 8 (4XS) / 10 (3XS) / 12 (2XS) / 14 (XS)

100% Poliéster  
Interlock  
100% Polyester  
Interlock

Tejido cómodo y de alta durabilidad. Cintura elástica con cordón interior.  
*Comfortable and highly durable fabric. Elastic waistband with internal drawstring.*



**102**  
BLACK/  
WHITE



**201**  
WHITE/  
BLACK



**336**  
NAVY/  
RED



**339**  
DARK NAVY/  
YELLOW



**451**  
GREEN MEDIUM/  
BLACK



**601**  
RED/  
BLACK



**703**  
ROYAL/  
DARK NAVY



**881**  
ORANGE/  
BLACK



**907**  
YELLOW/  
ROYAL





# CANCHA

## SLEEVELESS

2027



SR **104242.** S / M / L / XL / 2XL / 3XL / 4XL

JR **104242.** 4 (6XS) / 6 (5XS) / 8 (4XS) / 10 (3XS) / 12 (2XS) / 14 (XS)

100% Poliéster  
Interlock  
100% Polyester  
Interlock

Tejido cómodo y de alta durabilidad. Tecnología Micro-Mesh System en zonas de mayor sudoración. Camiseta sin mangas con cuello redondo. Short con cintura elástica ajustable.

*Comfortable and highly durable fabric. Round neck with inner elastic covertape for a better fit.*



**901**

YELLOW/  
BLACK



**342**

DARK NAVY/  
SKY



**100**

BLACK



**200**

WHITE



**703**

ROYAL/  
DARK NAVY



**552**

VIOLET/WHITE



**451**

GREEN MEDIUM/  
BLACK



**601**

RED/  
BLACK



**102**

BLACK/  
WHITE



**881**

ORANGE/  
BLACK



**709**

ROYAL/  
YELLOW



SR **902676.** S / M / L / XL / 2XL

JR **902676.** 12 (2XS) / 14 (XS)



**901**

YELLOW/  
BLACK



**342**

DARK NAVY/  
SKY



**100**

BLACK



**200**

WHITE



**703**

ROYAL/  
DARK NAVY



**552**

VIOLET/WHITE



**451**

GREEN MEDIUM/  
BLACK



**601**

RED/  
BLACK



**102**

BLACK/  
WHITE



**881**

ORANGE/  
BLACK



**709**

ROYAL/  
YELLOW



# CANCHA



## T-SHIRT

2027



SR **104241.** S / M / L / XL / 2XL / 3XL / 4XL

JR **104241.** 4 (6XS) / 6 (5XS) / 8 (4XS) / 10 (3XS) / 12 (2XS) / 14 (XS)

100% Poliéster Interlock  
100% Polyester Interlock

Tejido cómodo y de alta durabilidad. Tecnología Micro-Mesh System en zonas de mayor sudoración. Camiseta sin mangas con cuello redondo. Short con cintura elástica ajustable.

*Comfortable and highly durable fabric. Round neck with inner elastic covertape for a better fit.*



**109**  
BLACK/  
YELLOW



**100**  
BLACK



**200**  
WHITE



**342**  
DARK NAVY/  
SKY



**337**  
DARK NAVY/  
ROYAL



**601**  
RED/  
BLACK



**102**  
BLACK/  
WHITE



**108**  
BLACK/  
ORANGE



**709**  
ROYAL/  
YELLOW



# COMBI PREMIUM



## T-SHIRT

N.O.S



SR 104494. S / M / L / XL / 2XL / 3XL / 4XL / 5XL

JR 104494. 4 (6XS) / 6 (5XS) / 8 (4XS) / 10 (3XS) / 12 (2XS) / 14 (XS)

100% Poliéster  
Interlock  
100% Polyester  
Interlock

Tejido confortable y de alta durabilidad. Cuello redondo con covertape interior para evitar rozaduras.

Comfortable and highly durable fabric. Round neck with inner covertape to prevent chafing.



**013**

TURQUOISE FLUOR/  
DARK NAVY



**031**

PINK FLUOR/  
BLACK



**102**

BLACK/  
WHITE



**109**

BLACK/  
YELLOW



**151**

ANTHRACITE/  
BLACK



**203**

WHITE/  
DARK NAVY



**280**

MEDIUM MELANGE/  
BLACK



**332**

DARK NAVY/  
WHITE



**336**

DARK NAVY/  
RED



**452**

GREEN MEDIUM/  
BLACK



**672**

RUBY/  
WHITE



**601**

RED/  
BLACK



**603**

RED/  
DARK NAVY



**703**

ROYAL/  
DARK NAVY



**709**

ROYAL/  
YELLOW



**881**

ORANGE/  
BLACK



**901**

YELLOW/  
BLACK



# COMBI PREMIUM



## T-SHIRT N.O.S



**SR 902655.S / M / L / XL / 2XL**  
**JR 902655.12 (2XS) / 14 (XS)**

100% Poliéster Interlock  
100% Polyester Interlock

Tejido confortable y de alta durabilidad. Cuello redondo con covertape interior para evitar rozaduras.  
*Comfortable and highly durable fabric. Round neck with inner covertape to prevent chafing.*



**013**  
TURQUOISE FLUOR/  
DARK NAVY



**031**  
PINK FLUOR/  
BLACK



**102**  
BLACK/  
WHITE



**109**  
BLACK/  
YELLOW



**151**  
ANTHRACITE/  
BLACK



**203**  
WHITE/  
DARK NAVY



**280**  
MEDIUM MELANGE/  
BLACK



**332**  
DARK NAVY/  
WHITE



**336**  
DARK NAVY/  
RED



**452**  
GREEN MEDIUM/  
BLACK



**672**  
RUBY/  
WHITE



**601**  
RED/  
BLACK



**603**  
RED/  
DARK NAVY



**703**  
ROYAL/  
DARK NAVY



**709**  
ROYAL/  
YELLOW



**881**  
ORANGE/  
BLACK



**901**  
YELLOW/  
BLACK



# KANSAS



53 cm.  
size M

102

BLACK/  
WHITE

WHITE/  
BLACK

## REVERSIBLE SET

N.O.S.

UNISEX



SR 102851. S / M / L / XL / 2XL / 3XL / 4XL

SR 102851. 4 (6XS) / 6 (5XS) / 8 (4XS) / 10 (3XS) / 12 (2XS) / 14 (XS)

100% Polyester Interlock  
100% Polyester Mesh

Set compuesto de camiseta y short reversibles confeccionados en tejido ligero. La camiseta se ha diseñado sin mangas y con cuello en pico para maximizar la libertad de movimiento durante la práctica deportiva. Incorpora tecnología Micro Mesh. El short incluye cintura elástica ajustable mediante cordón. Incorpora tecnología Micro Mesh. Logo J bordado.

*Set consisting of a reversible T-shirt and shorts made of lightweight fabric. Sleeveless designed T-shirt with a V-neck to maximize freedom of movement during sports. Incorporates Micro Mesh technology. The shorts include an adjustable elastic waistband with waist string. Incorporates Micro Mesh technology. Embroidered J logo.*



452

GREEN MEDIUM/  
WHITE

WHITE/  
GREEN MEDIUM



013

TURQUOISE FLUOR/  
NAVY

NAVY/  
TURQUOISE FLUOR



332

NAVY/  
WHITE

WHITE/  
NAVY



339

DARK NAVY/  
YELLOW

YELLOW/  
DARK NAVY



602

RED/  
WHITE

WHITE/  
RED



901

YELLOW/  
BLACK

BLACK/  
YELLOW



702

ROYAL/  
WHITE

WHITE/  
ROYAL



881

ORANGE/  
BLACK

BLACK/  
ORANGE



# ARO



REVERSIBLE

N.O.S.



SR 100050. S / M / L / XL / 2XL - 3XL

JR 100050. 4 (6XS) - 6 (5XS) / 8 (4XS) - 10 (3XS) / 12 (2XS) / 14 (XS)

Rejilla  
100% Poliéster  
Mesh  
100% Polyester

Camiseta de baloncesto reversible que incorpora la tecnología Micro-Mesh para favorecer la transpiración. Logo serigrafiado.

*Reversible basketball T-shirt incorporating Micro-Mesh technology enhancing breathability. Silk-screen printed logo.*



# ROOKIE



REVERSIBLE

N.O.S.



SR 100529. S / M / L / XL / 2XL - 3XL

JR 100529. 4 (6XS) - 6 (5XS) / 8 (4XS) - 10 (3XS) / 12 (2XS) / 14 (XS)

Rejilla  
100% Poliéster  
Mesh  
100% Polyester

Pantalón corto de baloncesto reversible que incorpora tecnología Micro-Mesh para favorecer la transpiración. Cintura elástica ajustable con cordón. Logo serigrafiado.

*Reversible basketball short incorporating Micro-Mesh technology for breathability. Adjustable elastic drawstring waist. Silk-screen printed logo.*





**100**  
BLACK



## BASKET / T-SHIRT

N.O.S.



SR **101660.** S / M / L / XL / 2XL - 3XL / 4XL - 5XL

JR **101660.** 4 (6XS) - 6 (5XS) / 8 (4XS) - 10 (3XS) / 12 (2XS) / 14 (XS)

100% Poliéster  
Interlock  
100% Polyester  
Interlok

Camiseta de baloncesto clásica diseñada con cuello de pico. Logo J serigráfico.

*Classic basketball T-shirt with V-neck. Silk-screen printed logo.*



**200**  
WHITE



**331**  
NAVY



**450**  
GREEN MEDIUM



**600**  
RED



**700**  
ROYAL



**880**  
ORANGE



**900**  
YELLOW

Tejido

## NOBEL LONG



**100**  
BLACK



## BASKETBALL SHORTS

N.O.S.



SR **104526.** S / M / L / XL / 2XL / 3XL / 4XL

JR **104526.** 4 (6XS) / 6 (5XS) / 8 (4XS) / 10 (3XS) / 12 (2XS) / 14 (XS)

100% Poliéster  
Interlock  
100% Polyester  
Interlok

Tejido cómodo y de alta durabilidad. Cintura elástica ajustable con cordón interior.

*Comfortable and highly durable fabric. Adjustable elastic waist with inner drawstring.*



**200**  
WHITE



**331**  
NAVY



**450**  
GREEN MEDIUM



**600**  
RED



**700**  
ROYAL

## TREVISO



## SHORT

N.O.S.



SR **100822.** S / M / L / XL / 2XL - 3XL

JR **100822.** 4 (6XS) - 6 (5XS) / 8 (4XS) - 10 (3XS) / 12 (2XS) / 14 (XS)

100% Poliéster  
Interlock

Shorts con cintura elástica ajustable con cordón.  
*Shorts with an adjustable elastic drawstring waist.*



**331**  
DARK NAVY



**100**  
BLACK



**200**  
WHITE



**600**  
RED



**700**  
ROYAL



**450**  
GREEN MEDIUM



**880**  
ORANGE



**900**  
YELLOW



# TACTICA

## SWEATSHIRT

N.O.S.



SR 104245. S / M / L / XL / 2XL / 3XL / 4XL

JR 104245. 4 (6XS) / 6 (5XS) / 8 (4XS) / 10 (3XS) / 12 (2XS) / 14 (XS)

Fleece  
90% Polyester  
10% Elastan

Tejido cálido interior, cómodo y elástico. Alta durabilidad. Cuello alto redondo en rib. Prenda básica.

*Warm, comfortable and stretchy inner fabric. High durability. High round collar in rib. Basic garment.*



**100**  
BLACK



**331**  
NAVY



**450**  
GREEN MEDIUM



**600**  
RED



**700**  
ROYAL



**880**  
ORANGE



**900**  
YELLOW



**010**  
TURQUOISE FLUOR

# FINAL

## LONG PANTS

N.O.S.



SR 104289. S / M / L / XL / 2XL / 3XL / 4XL

Interlock  
100% Polyester  
Mesh  
100% Polyester

Tejido cómodo y de alta durabilidad. Paneles laterales con botones a presión. Cintura elástica ajustable. Bolsillos sin cremallera.

*Comfortable and highly durable fabric. Side panels with snap buttons. Adjustable elastic waist. Non-zip pockets.*



**100**  
BLACK



**331**  
NAVY





## RUGBY



# NATION

## T-SHIRT

2027


**104384.** S / M / L / XL / 2XL / 3XL / 4XL / 5XL

**104384.** 4 (6XS) / 6 (5XS) / 8 (4XS) / 10 (3XS) / 12 (2XS) / 14 (XS)

Heavy Interlock  
94% Polyester  
6% Elastan

Tejido ultrarresistente y elástico. Ajuste ergonómico. Sistema de silicona antideslizante para sujetar el balón. Costuras extra resistentes y cómodas, que no afectan a la elasticidad de la prenda.

*Ultra-resistant and elastic fabric. Ergonomic fit. Non-slip silicone system to hold the ball. Extra strong and comfortable seams that do not affect the elasticity of the garment.*



**100**  
BLACK/  
WHITE



**200**  
WHITE /  
BLACK



**331**  
DARK NAVY/  
WHITE



**600**  
RED/  
WHITE



**700**  
ROYAL/  
WHITE



**482**  
JUNE BUG/  
WHITE





# MYSKIN

T-SHIRT 2027

**SR 104511.** S / M / L / XL / 2XL / 3XL / 4XL / 5XL

Heavy Interlock  
94% Polyester  
6% Elastan

Tejido ultrarresistente y elástico. Ajuste ergonómico. Costuras reforzadas y cómodas, aplicadas con el sistema FLATLOCK. No afectan a la elasticidad de la prenda. Mangas raglán. Diseño sublimado.

*Ultra-resistant and stretchy fabric. Ergonomic fit. Reinforced and comfortable seams, applied with the FLATLOCK system. Do not affect the elasticity of the garment. Raglan sleeves. Sublimated design.*



**601**  
RED/  
BLACK



**109**  
BLACK/  
YELLOW



**709**  
ROYAL/  
YELLOW



**452**  
GREEN MEDIUM/  
WHITE



**312**  
DARK NAVY/  
SKY



**110**  
ANTHRACITE/  
YELLOW



**703**  
ROYAL/  
DARK NAVY



# STIMULUS

T-SHIRT 2027

**SR 104252.** S / M / L / XL / 2XL / 3XL / 4XL / 5XL

Heavy Interlock  
100% Polyester

Tejido cómodo y de alta durabilidad. Costuras extra resistentes incorporadas con el sistema Flatlock para evitar roces en zonas de abrasión.

*Comfortable and highly durable fabric. Extra strong seams incorporated with the Flatlock system to prevent chafing in areas of abrasion.*



**117**  
BLACK/  
GREEN FLUOR



**305**  
DARK NAVY/  
RASBERRY



**353**  
SKY/  
DARK NAVY



**609**  
RED/  
YELLOW



**701**  
ROYAL/  
BLACK



**881**  
ORANGE/  
BLACK



# PHOENIX III



## T-SHIRT

2028



SR 105198. S / M / L / XL / 2XL / 3XL / 4XL / 5XL

Heavy Interlock  
94% Polyester  
6% Elastan

Tejido ultrarresistente y elástico. Ajuste ergonómico. Costuras reforzadas y cómodas, aplicadas con el sistema Flatlock, que no afecta a la elasticidad de la prenda. Mangas raglán.

*Ultra-resistant and stretchy fabric. Ergonomic fit. Reinforced and comfortable Flatlock system, that does not affect the garment's elasticity. Raglan sleeves.*



**383**

MEDIUM SKY/  
DARK NAVY



**102**

BLACK/  
WHITE



**201**

WHITE/  
BLACK



**451**

GREEN MEDIUM/  
BLACK



**601**

RED/  
BLACK



**703**

ROYAL/  
DARK NAVY





# OLIMPIADA

## T-SHIRT

N.O.S



**SR 103839.** S / M / L / XL / 2XL / 3XL / 4XL

**JR 103839.** 8 (4XS) / 10 (3XS) / 12 (2XS) / 14 (XS)

Heavy Interlock  
100% Polyester

Camiseta de manga corta con cuello redondo en tejido base. Construcción con el sistema de costuras planas Flatlock. Costuras atrasadas en la espalda. Elaborada con tejido ligero y transpirable. Logotipos Joma en printing.

*Short-sleeved T-shirt with a round neckline in a base fabric. Made with the Flatlock seam system. Reverse seams on the back. Made with lightweight and breathable fabric. Joma logos in printing.*



**700**  
ROYAL



**100**  
BLACK



**200**  
WHITE



**450**  
GREEN MEDIUM



**600**  
RED



**251**  
LIGHT MELANGE



**331**  
DARK NAVY/



# TRY

SHORT

2027



SR 104385. S / M / L / XL / 2XL / 3XL / 4XL / 5XL

JR 104385. 4 (6XS) / 6 (5XS) / 8 (4XS) / 10 (3XS) / 12 (2XS) / 14 (XS)

Twill  
100% Polyester

Tejido ultrarresistente y elástico. Sistema de silicona antideslizante para sujetar el balón. Costuras extra resistentes incorporadas con el sistema Flatlock en zonas de abrasión. Cintura elástica ajustable.

*Ultra-resistant and stretchy fabric. Non-slip silicone system to hold the ball. Extra strong seams incorporated with the Flatlock system in abrasion areas. Adjustable elastic waist.*

# HOOK

SHORT

N.O.S.



SR 102220. S / M / L / XL / 2XL / 3XL / 4XL / 5XL

JR 102220. 4 (6XS) / 6 (5XS) / 8 (4XS) / 10 (3XS) / 12 (2XS) / 14 (XS)

Twill  
100% Polyester

Short específico de rugby con costuras dobles para aumentar la resistencia. Tejido elástico en la entrepierna y en el lateral para mejorar el movimiento. Silicona insertada en la cintura para un ajuste óptimo.

*Match quality cut & sew rugby shorts with double seams to increase toughness. Elasticated crotch and side panel to improve movement and a silicone insert for optimal fit.*

# OLIMPIADA

SHORT

N.O.S.



SR 103841. S / M / L / XL / 2XL / 3XL

JR 103841. 4 (6XS) / 6 (5XS) / 8 (4XS) / 10 (3XS) / 12 (2XS) / 14 (XS)

Heavy Interlock  
100% Polyester

Short con cinturilla elástica ajustable mediante cordón interior. Tiene apliques de silicona en el interior para mayor fijación. Pequeño bolsillo interior. Elaborado con tejido ligero y transpirable. Logotipo Joma bordado.

*Shorts with an adjustable elastic waistband through an interior drawstring. Silicone overlays on the inside for a better grip. Small inner pocket. Made with lightweight and breathable fabric. Embroidered Joma logo.*



# STIMULUS

## SWEATSHIRT

2027



SR 104253. S / M / L / XL / 2XL / 3XL / 4XL / 5XL

Fleece  
100% Polyester

Tejido cálido interior, comfortable y de alta durabilidad. Costuras Flatlock para evitar roces en zonas de abrasión. Cuello, puños y bajo en rib.

*Warm inner fabric, comfortable and highly durable. Flatlock seams to prevent chafing in high abrasion areas. Ribbed collar, cuffs, and hem.*



**100**  
BLACK

**150**  
ANTHRACITE

**331**  
DARK NAVY

**480**  
JUNE BUG

**600**  
RED

**700**  
ROYAL

## RAINJACKET

2027



SR 104315. S / M / L / XL / 2XL / 3XL / 4XL / 5XL

100% Poliéster  
100% Polyester

Tejido waterproof 5.000 mm, resistente a lluvia moderada, con mesh interior. Cuello redondo en rib. Bajo ajustable con stopper.

*Waterproof fabric 5,000 mm, resistant to moderate rain, with interior mesh. Round neck in rib. Adjustable hem with stopper.*



**100**  
BLACK

**150**  
ANTHRACITE

**331**  
DARK NAVY



## LONG PANTS

2027



SR 104316. S / M / L / XL / 2XL / 3XL / 4XL / 5XL

100% Poliéster  
100% Polyester

Tejido waterproof 5.000 mm, resistente a lluvia moderada, con mesh interior. Abertura lateral con cremallera impermeable. Cintura elástica ajustable. Bolsillos con cremallera.

*Waterproof fabric 5,000 mm, resistant to moderate rain, with mesh interior. Side opening with waterproof zipper. Adjustable elastic waist. Zip pockets.*



**100**  
BLACK

**331**  
DARK NAVY





# PROTEC RUGBY

## RUGBY HELMET

2027

400704. M / L



**106**  
BLACK/  
RED



**110**  
BLACK/  
ANTHRACITE

400438. 2XS / M / L



**100**  
BLACK



**200**  
WHITE

## BALL SUPPORT

2027

400665.

PACK 10



600

Soporte balón rugby.

Kicking Tee.

# BALLS RUGBY

## J-PRO

INDIVIDUAL

401735.

Cover Material: High Grade Rubber.  
Backing Fabric: 2 Polester + 1 Cotton  
Bladder: Latex Bladder  
Ball weight: 430 - 460 gm



**208**  
SIZE 5

## J-MAX

INDIVIDUAL

400680.



**209**  
SIZE 3

Cover Material: Medium Grade Rubber compound with grip emboss.  
Backing Fabric: 1 Light Polester + 1 Cotton C  
Bladder: Latex Bladder  
Ball weight: 390 ± 10 gm

400680.



**217**  
SIZE 4

## J-TRAINING

INDIVIDUAL

400679.

Cover Material: Medium Grade Rubber compound with grip emboss.  
Backing Fabric: 2 Polester + 1 Cotton  
Bladder: Latex Bladder  
Ball weight: 440 ± 10 gm



**206**  
SIZE 5

## J-MATCH

INDIVIDUAL

400742.

Cover Material: High Grade Rubber compound with grip emboss made with unique co-molding process.  
Backing Fabric: 1 High quality Canvas + 2 High Quality PC  
Bladder: Heavy Latex Bladder  
Ball weight: 460 ± 10 gm



**201**  
SIZE 5



## HANDBALL





# HISPA V



## T-SHIRT

2027



SB 104391. S / M / L / XL / 2XL / 3XL / 4XL

Interlock  
100% Polyester

Tejido cómodo y de alta durabilidad. Costuras Flatlock para evitar roces en zonas de abrasión. Mangas raglán para mayor ajuste y movilidad. Diseño sublimado.

Comfortable and highly durable fabric. Flatlock seams to prevent chafing in high abrasion areas. Raglan sleeves for better fit and mobility. Sublimated design.



**201**  
WHITE/  
BLACK



**102**  
BLACK/  
WHITE



**336**  
DARK NAVY/  
RED



**337**  
DARK NAVY/  
ROYAL



**452**  
GREEN MEDIUM/  
WHITE



**702**  
ROYAL/  
WHITE



**601**  
RED/  
BLACK



**602**  
RED/  
WHITE



**603**  
RED/  
DARK NAVY



**901**  
YELLOW/  
BLACK



# DINAMO II



## T-SHIRT

2027



SR 104408.S / M / L / XL / 2XL / 3XL

JR 104408.8 (4XS) / 10 (3XS) / 12 (2XS) / 14 (XS)

Interlock  
100% Polyester  
emboss

Tejido confortable y de alta durabilidad. Costuras Flatlock para evitar roces en zonas de abrasión. Cuello redondo en rib. Diseño embossado con detalles en relieve.

Comfortable and highly durable fabric. Flatlock seams to prevent chafing in high abrasion areas. Round ribbed collar. Embossed design with raised details.



**102**  
BLACK/  
WHITE



**201**  
WHITE/  
BLACK



**332**  
DARK NAVY  
WHITE



**452**  
GREEN MEDIUM/  
WHITE



**602**  
RED/  
WHITE



**702**  
ROYAL/  
WHITE



**901**  
YELLOW/BLACK



# DINAMO II



## T-SHIRT

2027



SR 902686.S / M / L / XL / 2XL

Interlock  
100% Polyester  
emboss

Tejido cómodo y de alta durabilidad. Costuras Flatlock para evitar rozos en zonas de abrasión. Cuello redondo en rib. Diseño embossado con detalles en relieve.

Comfortable and highly durable fabric. Flatlock seams to prevent chafing in high abrasion areas. Round ribbed collar. Embossed design with raised details.



**102**  
BLACK/  
WHITE



**201**  
WHITE/  
BLACK



**332**  
DARK NAVY  
WHITE



**452**  
GREEN MEDIUM/  
WHITE



**602**  
RED/  
WHITE



**702**  
ROYAL/  
WHITE



**901**  
YELLOW/  
BLACK



# PHOENIX



FLATLOCK SEAMS SYSTEM



T-SHIRT

2028



SR 105199. S / M / L / XL / 2XL / 3XL / 4XL

Interlock  
100% Polyester

Tejido resistente. Costuras reforzadas y cómodas, aplicadas con el sistema Flatlock, que no afecta a la elasticidad de la prenda y que se alejan de las zonas de abrasión.

*Durable fabric. Reinforced, comfortable seams applied with the Flatlock system that preserve the garment's elasticity and are positioned away from high-abrasion areas.*



**102**  
BLACK/  
WHITE



**201**  
WHITE/  
BLACK



**336**  
DARK NAVY/  
RED



**451**  
GREEN MEDIUM/  
BLACK



**601**  
RED/  
BLACK



**703**  
ROYAL/  
DARK NAVY



**907**  
YELLOW/  
ROYAL





# OLIMPIADA



T-SHIRT

N.O.S



SR 103837. S / M / L / XL / 2XL / 3XL / 4XL

JR 103837. 12 (2XS) / 14 (XS)

Interlock  
100% Polyester

Camiseta de manga corta con cuello redondo en tejido base. Construcción con el sistema de costuras planas Flatlock. Costuras atrasadas en la espalda. Elaborada con tejido ligero y transpirable. Logotipos Joma en printing.

Short-sleeved T-shirt with a round neckline in a base fabric. Made with the Flatlock seam system. Reverse seams on the back. Made with lightweight and breathable fabric. Joma logos in printing.



700  
ROYAL



100  
BLACK



200  
WHITE



251  
LIGHT MELANGE



331  
DARK NAVY



450  
GREEN MEDIUM



600  
RED



# STRONG



T-SHIRT

N.O.S



SR 101662. S / M / L / XL / 2XL - 3XL

JR 101662. 4 (6XS) - 6 (5XS) / 8 (4XS) - 10 (3XS) / 12 (2XS) / 14 (XS)

Interlock  
100% Polyester

Camiseta de rugby para entrenamiento. Cuello redondo y logo en serigrafía.  
Cut & Sew round neck training shirt with flatlock seams and printed Joma logo.



700  
ROYAL



100  
BLACK



200  
WHITE



331  
DARK NAVY



480  
JUNE BUG



600  
RED



880  
ORANGE



900  
YELLOW



# DINAMO

## T-SHIRT

2027



SR 100446. S / M / L / XL / 2XL - 3XL

JR 100446. 8 (4XS) - 10 (3XS) / 12 (2XS) / 14 (XS)

Interlock  
100% Polyester

Camiseta diseñada con cuello redondo.  
*T-shirt with rounded collar.*



**600**  
RED/  
WHITE



**100**  
BLACK/  
WHITE



**200**  
WHITE/  
BLACK



**450**  
GREEN MEDIUM/  
WHITE



**700**  
ROYAL/  
WHITE



**900**  
YELLOW/  
BLACK



# TACTICA

## SWEATSHIRT

N.O.S.



SR 104245. S / M / L / XL / 2XL / 3XL / 4XL

JR 104245. 4 (6XS) / 6 (5XS) / 8 (4XS) / 10 (3XS) / 12 (2XS) / 14 (XS)

Fleece  
90% Polyester  
10% Elastan

Tejido cálido interior, confortable y elástico. Alta durabilidad. Cuello alto redondo en rib. Prenda básica.  
*Warm, comfortable and stretchy inner fabric. High durability. High round collar in rib. Basic garment.*



**100**  
BLACK



**331**  
NAVY



**450**  
GREEN MEDIUM



**600**  
RED



**700**  
ROYAL



**880**  
ORANGE



**900**  
YELLOW



**010**  
TURQUOISE  
FLUOR





# NOBEL

SHORT

N.O.S.



SR 100053. S / M / L / XL / 2XL - 3XL

JR 100053. 2 (8XS) - 3 (7XS) / 4 (6XS) - 6 (5XS) / 8 (4XS) - 10 (3XS) / 12 (2XS) / 14 (XS)

100% Polyester  
Interlock

Shorts con cintura elástica ajustable con cordón.  
Shorts with an adjustable elastic drawstring waist.



# PARIS

SHORT

N.O.S.



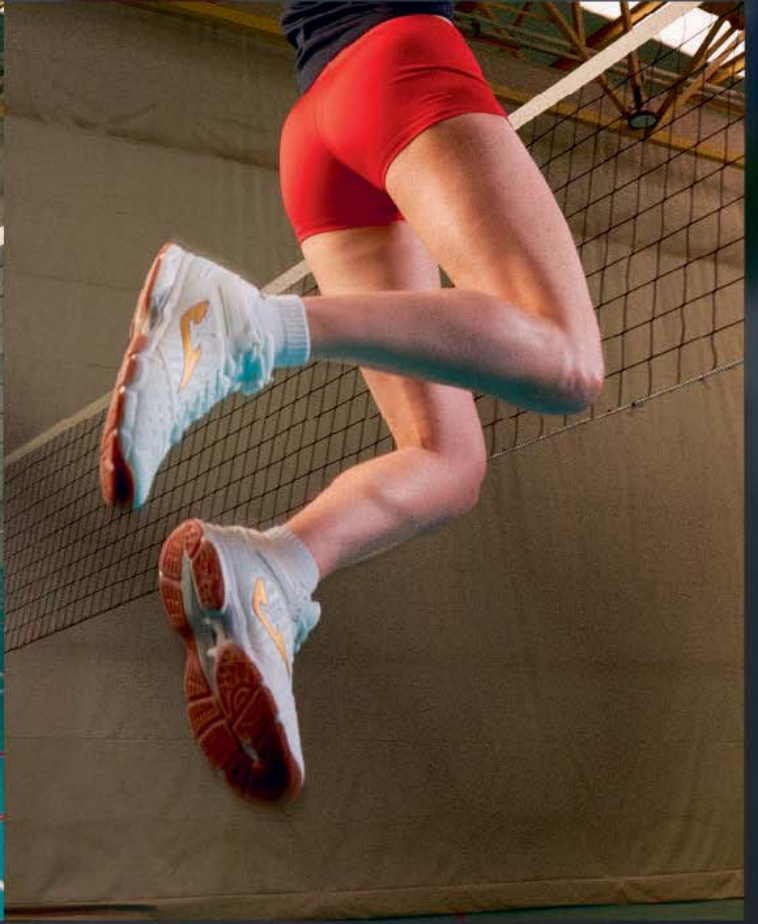
SR 900282. S / M / L / XL / 2XL

JR 900282. 12 (2XS) / 14 (XS)

100% Polyester  
Interlock

Pantalón corto con abertura lateral para un mejor ajuste. La cintura es elástica con cordón para un óptimo ajuste.  
Shorts with side openings for a better adjustment. Adjustable elastic drawstring waist.





## VOLLEYBALL







# CHAMPIONSHIP 20°



T-SHIRT

2029



SR 105164. S / M / L / XL / 2XL / 3XL / 4XL

JR 105164. 4 (6XS) / 6 (5XS) / 8 (4XS) / 10 (3XS) / 12 (2XS) / 14 (XS)

Polyester  
54% recycled  
polyester  
46% polyester

Tejido transpirable que integra fibras de poliéster reciclado. Acabado en jacquard para mayor transpirabilidad. Cuello redondo en tejido base. Mangas raglán.  
*Breathable fabric integrating recycled polyester fibers. Jacquard finish for increased breathability. Crew neck made from base fabric. Raglan sleeves.*



**422**  
CABBAGE/  
BLACK/WHITE



**601**  
RED/  
BLACK/WHITE



**603**  
RED/GOLD  
DARK NAVY



**683**  
RUBY/  
DARK NAVY/GOLD



**106**  
BLACK/  
RED/WHITE



**111**  
BLACK/  
NIMBUS CLOUD/WHITE



**203**  
WHITE/  
DARK NAVY/RED



**283**  
WHITE/DARK NAVY/  
TURQUOISE FLUOR



**383**  
MEDIUM SKY/  
DARK NAVY/WHITE



**321**  
DARK NAVY/YELLOW FLUOR/  
TURQUOISE FLUOR



**311**  
DARK NAVY/  
NIMBUS CLOUD/WHITE



**337**  
DARK NAVY/  
ROYAL/RED



**456**  
GREEN MEDIUM/  
RED/WHITE



**551**  
VIOLET/BLACK/  
PURPLE ROSE



**703**  
ROYAL/  
DARK NAVY/WHITE



**907**  
YELLOW/  
ROYAL/DARK NAVY



## CHAMPIONSHIP 20°

SLEEVELESS

2029



SR 903347. S / M / L / XL / 2XL

JR 903347. 14 (XS)

Polyester  
54% recycled  
polyester  
46% polyester

Tejido transpirable que integra fibras de poliéster reciclado. Acabado en jacquard para mayor transpirabilidad. Cuello a pico en tejido base.

Breathable fabric incorporating recycled polyester fibres. Jacquard finish for enhanced breathability. V-neck in base fabric.



**422**  
CABBAGE/  
BLACK/WHITE



**601**  
RED/  
BLACK/WHITE



**603**  
RED/GOLD  
DARK NAVY



**683**  
RUBY/  
DARK NAVY/GOLD



**106**  
BLACK/  
RED/WHITE



**111**  
BLACK/  
NIMBUS CLOUD/WHITE



**203**  
WHITE/  
DARK NAVY/RED



**283**  
WHITE/DARK NAVY/  
TURQUOISE FLUOR



**383**  
MEDIUM SKY/  
DARK NAVY/WHITE



**321**  
DARK NAVY/YELLOW FLUOR/  
TURQUOISE FLUOR



**311**  
DARK NAVY/  
NIMBUS CLOUD/WHITE



**337**  
DARK NAVY/  
ROYAL/RED



**456**  
GREEN MEDIUM/  
RED/WHITE



**551**  
VIOLET/BLACK/  
PURPLE ROSE



**703**  
ROYAL/  
DARK NAVY/WHITE



**907**  
YELLOW/  
ROYAL/DARK NAVY





# CHAMPIONSHIP VIII



## T-SHIRT

2028



SR 104263. S / M / L / XL / 2XL / 3XL / 4XL

JR 104263. 4 (6XS) / 6 (5XS) / 8 (4XS) / 10 (3XS) / 12 (2XS) / 14 (XS)

Interlock  
100% Polyester

Tejido cómodo y de alta durabilidad. Cuello redondo con covertape elástico interior para mayor ajuste. Sublimación en mangas.

*Comfortable and highly durable fabric. Round neck with elastic covertape inside for a better fit. Sublimation on sleeves.*



**010**  
TURQUOISE FLUOR/  
SKY



**020**  
GREEN FLUOR



**671**  
RUBY



**682**  
RUBY/  
SKY



**109**  
BLACK/  
YELLOW



**110**  
BLACK/  
ANTHRACITE



**200**  
WHITE



**206**  
WHITE/  
RED



**207**  
WHITE/  
ROYAL



**331**  
DARK NAVY



**336**  
DARK NAVY/  
RED



**339**  
DARK NAVY/  
YELLOW



**450**  
GREEN MEDIUM



**456**  
GREEN MEDIUM/  
RED



**474**  
KAKI/  
YELLOW FLUOR



**550**  
VIOLET



**600**  
RED



**609**  
RED/  
YELLOW



**880**  
ORANGE



**700**  
ROYAL



**709**  
ROYAL/  
YELLOW



**900**  
YELLOW



**904**  
YELLOW/  
GREEN MEDIUM



**907**  
YELLOW/  
ROYAL



## CHAMPIONSHIP VIII



## SLEEVELESS

2028



SR 902562. S / M / L / XL

JR 902562. 8 (4XS) / 10 (3XS) / 12 (2XS) / 14 (XS)

Interlock  
100% Polyester

Tejido cómodo y de alta durabilidad. Cuello a pico con covertape elástico interior para mayor ajuste. Sublimación en hombros.

*Comfortable and highly durable fabric. V-neck with inner elastic covertape for a better fit. Sublimation on shoulders.***010**TURQUOISE FLUOR/  
SKY**020**

GREEN FLUOR

**671**

RUBY

**682**RUBY/  
SKY**109**BLACK/  
YELLOW**110**BLACK/  
ANTHRACITE**200**

WHITE

**206**WHITE/  
RED**207**WHITE/  
ROYAL**331**

DARK NAVY

**336**DARK NAVY/  
RED**339**DARK NAVY/  
YELLOW**450**

GREEN MEDIUM

**456**GREEN MEDIUM/  
RED**474**KAKI/  
YELLOW FLUOR**550**

VIOLET

**600**

RED

**609**RED/  
YELLOW**880**

ORANGE

**700**

ROYAL

**709**ROYAL/  
YELLOW**900**

YELLOW

**904**YELLOW/  
GREEN MEDIUM**907**YELLOW/  
ROYAL



# ACADEMY IV



## T-SHIRT

N.O.S



SR 101968. S / M / L / XL / 2XL - 3XL

JR 101968. 2 (8XS) - 3 (7XS) / 4 (6XS) - 6 (5XS) / 8 (4XS) - 10 (3XS) / 12 (2XS) / 14 (XS)

Interlock  
100% Polyester

Mangas raglán para permitir la libertad de movimiento, diseñadas con corte a contraste de color. Logotipo serigrafado.

*T-shirt with raglan sleeves to allow freedom of movement. It features contrasting details. Silk-screened logo.*



251

LIGHT MELANGE/  
BLACK



102

BLACK/  
WHITE



117

BLACK/  
GREEN FLUOR



501

RASPBERRY/  
BLACK



201

WHITE/  
BLACK



206

WHITE/  
RED



203

WHITE/  
DARK NAVY



207

WHITE/  
ROYAL



702

ROYAL/  
WHITE



451

GREEN MEDIUM/  
BLACK



602

RED/  
WHITE



336

DARK NAVY/  
RED



342

DARK NAVY/  
TURQUOISE FLUOR



063

YELLOW FLUOR/  
DARK NAVY



901

YELLOW/  
BLACK



081

AMBER/  
BLACK



881

ORANGE/  
BLACK



## ACADEMY IV



## T-SHIRT

N.O.S



SR 901335. S / M / L / XL / 2XL

JR 901335. 12 (2XS) / 14 (XS)

Interlock  
100% PolyesterCamiseta de manga corta raglán y con cuello redondo. Logotipo serigrafado.  
*T-shirt with raglan sleeves to allow freedom of movement. Silk-screened logo.***251**  
LIGHT MELANGE/  
BLACK**102**  
BLACK/  
WHITE**117**  
BLACK/  
GREEN FLUOR**451**  
GREEN MEDIUM/  
BLACK**501**  
RASPBERRY/  
BLACK**201**  
WHITE/  
BLACK**206**  
WHITE/  
RED**203**  
WHITE/  
DARK NAVY**207**  
WHITE/  
ROYAL**702**  
ROYAL/  
WHITE**602**  
RED/  
WHITE**336**  
DARK NAVY/  
RED**342**  
DARK NAVY/  
TURQUOISE FLUOR**063**  
YELLOW FLUOR/  
DARK NAVY**901**  
YELLOW/  
BLACK**881**  
ORANGE/  
BLACK



# ACADEMY III



T-SHIRT

N.O.S



SR 101656. S / M / L / XL / 2XL - 3XL

JR 101656. 2 (8XS) - 3 (7XS) / 4 (6XS) - 6 (5XS) / 8 (4XS) - 10 (3XS) / 12 (2XS) / 14 (XS)

Interlock  
100% Polyester

Camiseta de manga corta con cuello redondo y con cortes a contraste en mangas. Logo J serigrafiado.  
Short sleeve, round neck t-shirt with contrast sleeves. Screen printed J logo.



**013**  
TURQUOISE FLUOR/  
DARK NAVY

**041**  
DARK ORANGE FLUOR/YELLOW FLUOR/  
BLACK

**061**  
GREEN MEDIUM/  
BLACK

**702**  
ROYAL/  
WHITE

**200**  
WHITE

**206**  
WHITE/  
RED

**207**  
WHITE/  
ROYAL



**102**  
BLACK/  
WHITE

**332**  
DARK NAVY/  
WHITE

**452**  
GREEN MEDIUM/  
WHITE

**601**  
RED/  
BLACK

**602**  
RED/  
WHITE

**881**  
ORANGE/  
BLACK

**901**  
YELLOW/  
BLACK



SR 901141. S / M / L / XL / 2XL

JR 901141. 12 (2XS) / 14 (XS)

Interlock  
100% Polyester

Camiseta de manga corta con cuello redondo y con cortes a contraste en mangas. Logo J serigrafiado.  
Short sleeve, round neck t-shirt with contrast sleeves. Screen printed J logo.



**013**  
TURQUOISE FLUOR/  
DARK NAVY

**041**  
DARK ORANGE FLUOR/YELLOW FLUOR/  
BLACK

**061**  
GREEN MEDIUM/  
BLACK

**702**  
ROYAL/  
WHITE

**200**  
WHITE

**206**  
WHITE/  
RED

**207**  
WHITE/  
ROYAL



**102**  
BLACK/  
WHITE

**332**  
DARK NAVY/  
WHITE

**452**  
GREEN MEDIUM/  
WHITE

**601**  
RED/  
BLACK

**602**  
RED/  
WHITE

**881**  
ORANGE/  
BLACK

**901**  
YELLOW/  
BLACK





# TREVISO

SHORT

2027


**SR 100822.** S / M / L / XL / 2XL - 3XL

**JR 100822.** 4 (6XS) - 6 (5XS) / 8 (4XS) - 10 (3XS) / 12 (2XS) / 14 (XS)

 Interlock  
100% Polyester

 Shorts con cintura elástica ajustable con cordón.  
*Shorts with an adjustable elastic drawstring waist.*


# STELLA II

SHORT

N.O.S.


**SR 900463.** S / M / L / XL / 2XL

**JR 900463.** 8 (4XS) / 10 (3XS) / 12 (2XS) / 14 (XS)

 Heavy Interlock  
100% Polyester

Pantalón corto con abertura curva en el lateral para favorecer la movilidad. Con cintura elástica con cordón interior para un ajuste óptimo.

*Shorts with curved openings on the sides to allow greater freedom of movements. With elastic drawstring waist for optimal fit.*


# VELA II

SHORT

N.O.S.


**SR 901138.** S / M / L / XL / 2XL

**JR 901138.** 8 (4XS) - 10 (3XS) / 12 (2XS) / 14 (XS)

 90% Cotton  
10% Elastan

 Short con cordón interior en la cintura para un ajuste óptimo y logo bordado.  
*Shorts with inner drawstring for optimal fit and embroidered logo.*




# ACCESSORIES



## BLOCK CODERA

PACK 4

400176. S/M/L

50% Cotton 30% Spandex 20% PE Foam

Codera tejida articulada, con abertura trasera para facilitar movimientos. Proporciona transpirabilidad. Tejido antideslizante para asegurar su posición. Protección interior delantera. Logo serigrafiado.

*Articulated elbow guard, with backside aperture to make movements easier. Provide sweating. Knitting anti-slip to secure its position. Inside front protection. Printed logo.*



100



200



## JUMP RODILLERA

PACK 4

400175. S/M/L

50% Cotton 30% Spandex 20% PE Foam

Rodillera tejida articulada, con abertura trasera para facilitar movimientos. Proporciona transpirabilidad. Tejido antideslizante para asegurar su posición. Protección interior delantera. Logo serigrafiado.

*Articulated knitting kneepad, with backside aperture to make movements easier. Provide sweating. Knitting anti-slip to secure its position. Inside front protection. Printed logo.*



100



200



331



## ELBOW COMPRESSION

PACK 12

400285. M/L

75% Cotton 20% PES 5% EA

Codera de compresión.

*Elbow-patch of compression.*



100



200





# HOCKEY





# LIDER



## POLO

2027



SR 104489. S / M / L / XL / 2XL / 3XL / 4XL / 5XL

JR 104489. 4 (6XS) / 6 (5XS) / 8 (4XS) / 10 (3XS) / 12 (2XS) / 14 (XS)

Jacquard  
92% Recycled  
polyester  
8% Spandex

Tejido cómodo y de alta durabilidad. Cuello redondo con covertape elástico interior para mayor ajuste. Sublimación en mangas.

Breathable fabric 100% recycled polyester. Micro-Mesh System technology in areas of higher perspiration. Ribbed button-down collar.



013

TURQOISE FLUOR/  
DARK NAVY



063

YELLOW FLUOR/  
DARK NAVY



102

BLACK/  
WHITE



451

GREEN MEDIUM/  
BLACK



203

WHITE/  
DARK NAVY



206

WHITE/  
RED



207

WHITE/  
ROYAL



332

DARK NAVY/  
WHITE



601

RED/  
BLACK



603

RED/  
DARK NAVY



703

ROYAL/  
DARK NAVY



881

ORANGE/  
BLACK



901

YELLOW/  
BLACK



907

YELLOW/  
ROYAL



# MICRO-MESH SYSTEM

# LIDER



## POLO

2027



SR 902643. S / M / L / XL / 2XL

JR 902643. 12 (2XS) / 14 (XS)

Jacquard  
92% Recycled polyester  
8% Spandex

Tejido cómodo y de alta durabilidad. Cuello redondo con covertape elástico interior para mayor ajuste. Sublimación en mangas.

Breathable fabric 100% recycled polyester. Micro-Mesh System technology in areas of higher perspiration. Ribbed button-down collar.



**013**  
TURQUOISE FLUOR/  
DARK NAVY



**063**  
YELLOW FLUOR/  
DARK NAVY



**102**  
BLACK/  
WHITE



**451**  
GREEN MEDIUM/  
BLACK



**203**  
WHITE/  
DARK NAVY



**206**  
WHITE/  
RED



**207**  
WHITE/  
ROYAL



**332**  
DARK NAVY/  
WHITE



**601**  
RED/  
BLACK



**603**  
RED/  
DARK NAVY



**703**  
ROYAL/  
DARK NAVY



**881**  
ORANGE/  
BLACK



**901**  
YELLOW/  
BLACK



**907**  
YELLOW/  
ROYAL



# TREVISO



SHORT

N.O.S.



SR 100822. S / M / L / XL / 2XL - 3XL

JR 100822. 4 (6XS) - 6 (5XS) / 8 (4XS) - 10 (3XS) / 12 (2XS) / 14 (XS)

Interlock  
100% Polyester

Shorts con cintura elástica ajustable con cordón.  
*Shorts with an adjustable elastic drawstring waist.*

40 cm.  
size M



**331**  
DARK NAVY



**100**  
BLACK



**200**  
WHITE



**600**  
RED



**700**  
ROYAL



**450**  
GREEN MEDIUM



**880**  
ORANGE



**900**  
YELLOW



# OPEN II



SKIRT

N.O.S.



SR 900759. S / M / L / XL / 2XL - 3XL

JR 900759.8 (4XS) - 10 (3XS) / 12 (2XS) / 14 (XS)



80% Polyester  
20% Elastan  
95% Polyester  
5% Elastan

Falda con pantalón interior que se caracteriza por su comodidad y su cintura elástica para un mejor ajuste.

*Skirt with underwear short characterised by its comfort and elastic waist for better fit.*

33 cm.  
Size M



**100**  
BLACK



**200**  
WHITE



**331**  
DARK NAVY



**600**  
RED



**700**  
ROYAL





## CRICKET





# CRICKET

## POLO



SR 104443. S / M / L / XL / 2XL / 3XL

JR 104443. 10 (3XS) / 12 (2XS) / 14 (XS)

Interlock  
100% Polyester

Tejido cómodo y de alta durabilidad. Cuello abotonado tipo polo. Aberturas inferiores para mayor movilidad.

*Comfortable and highly durable fabric. Buttoned polo-style collar. Lower side slits for enhanced freedom of movement.*



001

DARK WHITE



## SLEEVELESS



SR 104445. S / M / L / XL / 2XL / 3XL

JR 104445. 10 (3XS) / 12 (2XS) / 14 (XS)

Fleece  
100% Polyester

Tejido suave, cómodo y cálido. Elegante cuello a pico en rib. Sisa también en rib.

*Soft, comfortable, and warm fabric. Elegant V-neck in ribbed finish. Armhole also finished in rib.*



001

DARK WHITE



## LONG SLEEVE POLO SHIRT



SR 104444. S / M / L / XL / 2XL / 3XL

JR 104444. 10 (3XS) / 12 (2XS) / 14 (XS)

Interlock  
100% Polyester

Tejido cómodo y de alta durabilidad. Cuello abotonado tipo polo. Aberturas inferiores para mayor movilidad.

*Comfortable and highly durable fabric. Buttoned polo-type collar. Lower side slits for greater mobility.*



001

DARK WHITE





# CRICKET

## SWEATSHIRT



**SR 104446.** S / M / L / XL / 2XL / 3XL

**JR 104446.** 10 (3XS) / 12 (2XS) / 14 (XS)

Fleece  
100% Polyester

Tejido suave, cómodo y cálido. Elegante cuello a pico en rib. Puños también en rib.

*Soft, comfortable, and warm fabric. Elegant ribbed V-neck. Ribbed cuffs.*



**001**

DARK WHITE

## LONG PANTS



**SR 104447.** S / M / L / XL / 2XL / 3XL

**JR 104447.** 10 (3XS) / 12 (2XS) / 14 (XS)

Interlock  
100% Polyester

Tejido cómodo y de alta durabilidad. Cintura elástica con cordón interior. Bolsillos sin cremallera.

*Comfortable and highly durable fabric. Elasticated waistband with internal drawstring. Pockets without zips.*



**001**

DARK WHITE





## **BASQUE BALL**





# CANNES III

 LONG PANTS

N.O.S



SR 101663. S / M / L / XL / 2XL

JR 101663. 4 (6XS) / 6 (5XS) / 8 (4XS) / 10 (3XS) / 12 (2XS) / 14 (XS)

Interlock  
100% Polyester

Pantalón largo recto, con bolsillos, cintura elástica ajustable mediante cordón. Logo J bordado.

*Long straight trousers with pockets. Elasticated waistband with adjustable drawstring. Embroidered J logo.*

BOLSILLO  
POCKET



**100**  
BLACK



**200**  
WHITE



**331**  
DARK NAVY



# PELOTA

 LONG PANTS

N.O.S



SR 105347. M / L / XL / 2XL

Interlock  
100% Polyester

Tejido cómodo y de alta durabilidad. Cintura con cierre abotonado. Trabillas para cinturón. Bolsillo trasero con botón..

*Comfortable and highly durable fabric. Buttoned waistband. Belt loops. Back pocket with button closure.*



**200**  
WHITE





## REFEREE





## RESPECT III



## T-SHIRT

2027



SR 104240. S / M / L / XL / 2XL / 3XL

100% Polyester  
Interlock

Tejido cómodo y de alta durabilidad. Tecnología Micro-Mesh System en zonas de mayor sudoración. Bolsillos en el pecho con cierre adherente.

*Comfortable and highly durable fabric. Micro-Mesh System technology in areas of increased sweating. Chest pockets with hook and loop closure.***011**TURQOISE FLUOR/  
BLACK**031**PINK FLUOR/  
BLACK**061**YELLOW FLUOR/  
BLACK**110**BLACK/  
ANTHRACITE**371**XENON BLUE/  
BLACK**881**ORANGE/  
BLACK

## SHORTS

SR 101327. S / M / L / XL / 2XL / 3XL

100% Polyester  
Interlock

Pantalón corto para árbitro que incluye dos bolsillos laterales y otro en la parte trasera con cierre de velcro.

*Referee shorts, includes two side pockets and one on the back with velcro closure.*48 cm.  
size M**BOLSILLO TRASERO  
CON VELCRO  
BACK POCKET  
WITH VELCRO****100**  
BLACK

## SHORTS

SR 902243. S / M / L / XL / 2XL

100% Polyester  
Interlock

Pantalón corto para árbitro que incluye dos bolsillos laterales y otro en la parte trasera con cierre de velcro.

*Referee shorts, includes two side pockets and one on the back with velcro closure.*35 cm.  
size M**100**  
BLACK

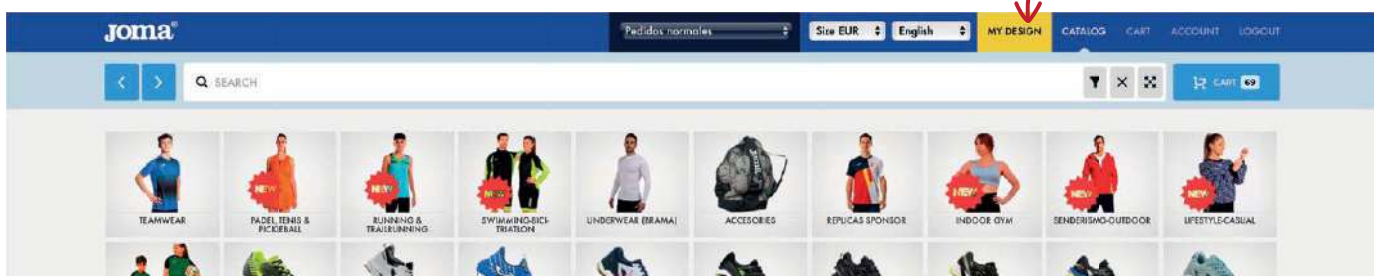


# MY DESIGN

100% SUBLIMATION, JUST OURS



Customized process





### 1. SPORT SELECTION

Select the desired sport.



### 2. PATTERN SELECTION

Select the garment you want to customize and choose your preferred neck style.



### 3. DESIGN SELECTION

You can choose from up to 47 different designs.



#### 4. COLOR SELECTION AND INSERT TEXT, LOGOS, BADGE...



You can change the color of up to 7 parts of the garment with 29 color options.

Add text and numbers with up to 10 different font styles.



Upload your logos or images. Resize, rotate, and flip them easily.



#### CONFIRMATION



#### PRODUCTION



#### SHIPPING



7 WEEKS



# PICASHO





# PICASHO CITY



## T-SHIRT

2028

PERSONALIZATION  
MY DESIGN



SR 105115. S / M / L / XL / 2XL / 3XL

JR 105115. 4 (6XS) / 6 (5XS) / 8 (4XS) / 10 (3XS) / 12 (2XS) / 14 (XS)

Jacquard butterfly.  
92% polyester  
8% spandex

Tejido ultra ligero, elástico y transpirable gracias a la tecnología Micro-Mesh System. Cuello redondo en tejido base.

*Ultra-light, stretchy, and breathable fabric thanks to the Micro-Mesh System technology. Crew neck made from base fabric.*



013

TURQUOISE FLUOR/  
DARK NAVY



041

DARK ORANGE FLUOR/  
BLACK



102

BLACK/  
WHITE



451

GREEN MEDIUM/  
BLACK



602

RED/  
WHITE



609

RED/  
YELLOW



702

ROYAL/  
WHITE



901

YELLOW/  
BLACK



# PICASHO CITY



## T-SHIRT

2028

PERSONALIZATION  
MY DESIGN



SR 903126. S / M / L / XL / 2XL

JR 903126. 12 (2XS) / 14 (XS)

Jacquard butterfly.  
92% polyester  
8% spandex

Tejido ultra ligero, elástico y transpirable gracias a la tecnología Micro-Mesh System. Cuello redondo en tejido base.

*Technical fabric with jacquard finish for increased breathability. Round neckline made from base fabric.*



**013**

TURQUOISE FLUOR/  
DARK NAVY



**041**

DARK ORANGE FLUOR/  
BLACK



**102**

BLACK/  
WHITE



**451**

GREEN MEDIUM/  
BLACK



**602**

RED/  
WHITE



**609**

RED/  
YELLOW



**702**

ROYAL/  
WHITE



**901**

YELLOW/  
BLACK



# PICASHO

SLEEVELES

2028

PERSONALIZATION  
MY DESIGN



SR 105238. S / M / L / XL / 2XL / 3XL

JR 105238. 8 (4XS) / 10 (3XS) / 12 (2XS) / 14 (XS)

Jacquard butterfly.  
92% polyester  
8% spandex

Tejido ultra ligero, elástico y transpirable gracias a la tecnología Micro-Mesh System. Acabados en corte láser para prevenir rozaduras.

Ultra-lightweight, stretchy and breathable fabric thanks to the Micro-Mesh System technology. Laser-cut finishes to prevent chafing.



013

TURQUOISE FLUOR/  
DARK NAVY



041

CORAL FLUOR/  
BLACK



102

BLACK/  
WHITE



451

GREEN MEDIUM/  
BLACK



602

RED/  
WHITE



609

RED/  
YELLOW



702

ROYAL/  
WHITE



901

YELLOW/  
BLACK



TOP

2028

PERSONALIZATION  
MY DESIGN



SR 903123. S / M / L / XL

JR 903123. 12 (2XS) / 14 (XS)

88% polyester  
12% spandex

Tejido transpirable, ligero y elástico para conseguir un ajuste ergonómico. Espalda tipo nadadora. Cierre con media cremallera invisible. Acabados en corte láser.

Breathable, lightweight, and stretchy fabric for an ergonomic fit. Racerback design. Half-length concealed zip closure. Laser-cut finishes.



013

TURQUOISE FLUOR/  
DARK NAVY



041

CORAL FLUOR/  
BLACK



102

BLACK/  
WHITE



451

GREEN MEDIUM/  
BLACK



602

RED/  
WHITE



609

RED/  
YELLOW



702

ROYAL/  
WHITE



901

YELLOW/  
BLACK





# PICASHO

BODY

2028

PERSONALIZATION  
MY DESIGN



SR 105239. S / M / L / XL

F.A: 85% Polyester  
15% Spandex

F.B: 80% Polyamide  
20% Elastane

Tejido ergonómico que garantiza total libertad de movimiento. Parte inferior de secado rápido. Parte superior equipada con media cremallera. Acabados en corte láser y costuras Flatlock. Slip interior incorporado.

*Ergonomic fabric for total freedom of movement. Quick-drying lower section. Upper section with half-zip. Laser-cut finishes and Flatlock seams. Built-in inner brief.*



**013**

TURQUOISE FLUOR/  
DARK NAVY



**041**

CORAL FLUOR/  
BLACK



**102**

BLACK/  
WHITE



**451**

GREEN MEDIUM/  
BLACK



**602**

RED/  
WHITE



**609**

RED/  
YELLOW



**702**

ROYAL/  
WHITE



**901**

YELLOW/  
BLACK

BODY

2028

PERSONALIZATION  
MY DESIGN



SR 903129. S / M / L

F.A: 88% Polyester  
12% Spandex

F.B: 80% Polyamide  
20% Elastane

Tejido elástico y de secado rápido. Forro interior delantero para mayor protección. Acabados en corte láser y costuras Flatlock. Cierre con cremallera invisible hasta el pecho.

*Elastic and quick-drying fabric. Front inner lining for added protection. Laser-cut finishes and Flatlock seams. Concealed zip clouser extending to the chest.*



**013**

TURQUOISE FLUOR/  
DARK NAVY



**041**

CORAL FLUOR/  
BLACK



**102**

BLACK/  
WHITE



**451**

GREEN MEDIUM/  
BLACK



**602**

RED/  
WHITE



**609**

RED/  
YELLOW



**702**

ROYAL/  
WHITE



**901**

YELLOW/  
BLACK



# PICASHO



## SWEATSHIRT

2028

PERSONALIZATION  
MY DESIGN



SR **105237.** S / M / L / XL / 2XL / 3XL

JR **105237.** 4 (6XS) / 6 (5XS) / 8 (4XS) / 10 (3XS) / 12 (2XS) / 14 (XS)

90% polyester  
10% spandex

Tejido cálido y ligeramente elástico para mayor libertad de movimiento. Cierre de media cremallera.

Warm and slightly stretchy fabric for greater freedom of movement. Half zip closure.



**013**

TURQUOISE FLUOR/  
DARK NAVY



**041**

CORAL FLUOR/  
BLACK



**102**

BLACK/  
WHITE



**451**

GREEN MEDIUM/  
BLACK



**602**

RED/  
WHITE



**609**

RED/  
YELLOW



**702**

ROYAL/  
WHITE



**901**

YELLOW/  
BLACK



# PICASHO



## TRACKSUIT TOP

2028

PERSONALIZATION  
MY DESIGN



SR **105200.** S / M / L / XL / 2XL / 3XL  
 JR **105200.** 4 (6XS) / 6 (5XS) / 8 (4XS) / 10 (3XS) / 12 (2XS) / 14 (XS)

Interlock  
 100% Polyester

Tejido cómodo y de alta durabilidad. Cierre con cremallera completa. Puños y cintura en rib. Bolsillos sin cremallera.  
*Comfortable and highly durable fabric. Full zip closure. Ribbed cuffs and waistband. Pockets without a zip.*



**013**  
 TURQUOISE FLUOR/  
 DARK NAVY



**041**  
 CORAL FLUOR/  
 BLACK



**102**  
 BLACK/  
 WHITE



**109**  
 BLACK/  
 YELLOW



**451**  
 GREEN MEDIUM/  
 BLACK



**601**  
 RED/  
 BLACK



**703**  
 ROYAL/  
 DARK NAVY





## RUNNING







# RECORD PRO



T-SHIRT

2027



SR 104290. S / M / L / XL / 2XL / 3XL

JR 104290. 8 (4XS) / 10 (3XS) / 12 (2XS) / 14 (XS)

Jacquard  
92% Polyester  
8% Spandex

Tejido ligero y elástico con tecnología Micro-Mesh System para evacuar el sudor. Costuras confortables. Diseño sublimado.

*Light and stretchy fabric with Micro-Mesh System technology to wick sweat away. Comfortable seams. Sublimated design.*



**020**

GREEN FLUOR



**100**

BLACK



**200**

WHITE



**300**

DARK NAVY



**350**

SKY BLUE



**450**

GREEN MEDIUM



**474**

KAKI



**600**

RED



**700**

ROYAL



**880**

ORANGE



**900**

YELLOW



# RECORD PRO



T-SHIRT

2027



SR 902526. S / M / L / XL

JR 902526. 12 (2XS) / 14 (XS)

Jacquard  
92% Polyester  
8% Spandex

Tejido ligero y elástico con tecnología Micro-Mesh System para evacuar el sudor. Costuras confortables. Diseño sublimado.

*Light and stretchy fabric with Micro-Mesh System technology to wick sweat away. Comfortable seams. Sublimated design.*



**020**

GREEN FLUOR



**100**

BLACK



**200**

WHITE



**300**

DARK NAVY



**350**

SKY BLUE



**450**

GREEN MEDIUM



**474**

KAKI



**600**

RED



**700**

ROYAL



**880**

ORANGE



**900**

YELLOW





# RECORD PRO



## SLEEVELES

2027



SR 104291. S / M / L / XL / 2XL / 3XL

JR 104291. 8 (4XS) / 10 (3XS) / 12 (2XS) / 14 (XS)

Jacquard  
92% Polyester  
8% Spandex

Tejido ligero y elástico con tecnología Micro-Mesh System para evacuar el sudor. Cubrecosturas elástico en cuello y sisa para evitar rozaduras. Diseño sublimado.

*Lightweight and stretchy fabric with Micro-Mesh System technology to wick away sweat. Elastic cover seams on neck and armholes to prevent chafing. Sublimated design.*



# RECORD PRO



## TOP

2027



SR 902527. S / M / L / XL

JR 902527. 12 (2XS) / 14 (XS)

Jacquard  
88% Polyester  
12% Spandex

Tejido ligero y elástico con tecnología Micro-Mesh System para evacuar el sudor. Cubrecosturas elástico en cuello y sisa para evitar rozaduras. Diseño sublimado.

*Quality fabric, lightweight, comfortable, and breathable. Racerback. Elastic band inside. Laser cut finish. Sublimated design.*





BODY

2027

# RECORD PRO



SR 104293. S / M / L / XL

F.A: 85% Polyester  
15% Spandex

Tejido elástico y de secado rápido para eliminar la humedad rápidamente. Costuras Flatlock y acabados en corte láser para evitar rozaduras. Abertura con cremallera en el pecho.

F.B: 80% Polyamide  
20% Elastane

Elastic and quick-drying fabric to quickly remove moisture. Flatlock seams and laser-cut finishes to prevent chafing. Zippered chest opening.



**100**  
BLACK



**021**  
GREEN FLUOR/  
BLACK



**201**  
WHITE/  
BLACK



**300**  
DARK NAVY



**353**  
SKY BLUE/  
DARK NAVY



**450**  
GREEN MEDIUM



**600**  
RED



**700**  
ROYAL



**881**  
ORANGE/  
BLACK



**901**  
YELLOW/  
BLACK



SR 902528. S / M / L / XL

F.A: 85% Polyester  
15% Spandex

Tejido elástico y de secado rápido para eliminar la humedad rápidamente. Costuras Flatlock y acabados en corte láser para evitar rozaduras. Abertura con cremallera en el pecho.

F.B: 80% Polyamide  
20% Elastane

Elastic and quick-drying fabric to quickly remove moisture. Flatlock seams and laser-cut finishes to prevent chafing. Zippered chest opening.



**100**  
BLACK



**021**  
GREEN FLUOR/  
BLACK



**201**  
WHITE/  
BLACK



**300**  
DARK NAVY



**353**  
SKY BLUE/  
DARK NAVY



**450**  
GREEN MEDIUM



**600**  
RED



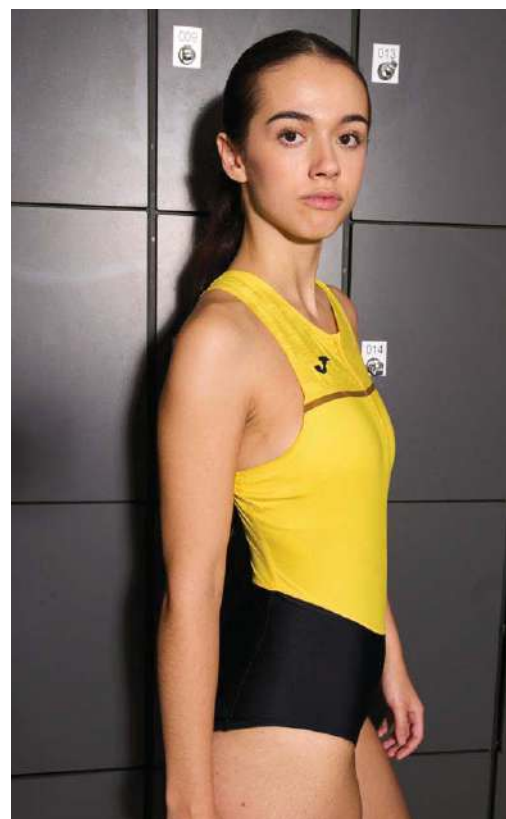
**700**  
ROYAL



**881**  
ORANGE/  
BLACK



**901**  
YELLOW/  
BLACK





# RECORD PRO

 SWEATSHIRT

2027



SR 104294. S / M / L / XL / 2XL / 3XL

JR 104294. 8 (4XS) / 10 (3XS) / 12 (2XS) / 14 (XS)

Fleece  
90% Polyester  
10% Spandex 230

Tejido cálido interior, confortable y elástico para mayor adaptabilidad y comodidad. Cierre con cremallera hasta el pecho. Diseño sublimado.

Warm, comfortable and stretchy inner fabric for greater adaptability and comfort. Zip closure up to the chest. Sublimated design.



**600**  
RED



**020**  
GREEN FLUOR



**100**  
BLACK



**200**  
WHITE



**300**  
DARK NAVY



**350**  
SKY BLUE



**450**  
GREEN MEDIUM



**474**  
KAKI



**700**  
ROYAL



**880**  
ORANGE



**900**  
YELLOW



SR 902529. S / M / L / XL

JR 902529. 12 (2XS) / 14 (XS)



**600**  
RED



**020**  
GREEN FLUOR



**100**  
BLACK



**200**  
WHITE



**300**  
DARK NAVY



**350**  
SKY BLUE



**450**  
GREEN MEDIUM



**474**  
KAKI



**700**  
ROYAL



**880**  
ORANGE



**900**  
YELLOW



# RECORD PRO



## TRACKSUIT TOP

2027



SR 104295. S / M / L / XL / 2XL / 3XL

JR 104295. 8 (4XS) / 10 (3XS) / 12 (2XS) / 14 (XS)

Microfiber  
100% Polyester  
Cotton feeling

Tejido cómodo y de alta durabilidad. Ajuste en rib en puños y bajo. Mangas raglán para mayor comodidad y libertad de movimiento. Bolsillos frontales con cremallera.  
*Comfortable and highly durable fabric. Ribbed fit on cuffs and hem. Raglan sleeves for greater comfort and freedom of movement. Front zip pockets.*



**020**

GREEN FLUOR



**100**

BLACK



**200**

WHITE



**300**

DARK NAVY



**350**

SKY BLUE



**450**

GREEN MEDIUM



**474**

KAKI



**600**

RED



**700**

ROYAL



**880**

ORANGE



**900**

YELLOW



## LONG PANTS

2027



SR 104298. S / M / L / XL / 2XL / 3XL

JR 104298. 8 (4XS) / 10 (3XS) / 12 (2XS) / 14 (XS)

Microfiber  
100% Polyester  
Cotton feeling

Tejido cómodo y de alta durabilidad. Cintura elástica ajustable. Bolsillos laterales con cremallera. Bajos con cremallera para mayor comodidad al poner y quitar.  
*Comfortable and highly durable fabric. Adjustable elastic waist. Side pockets with zipper. Zippered cuffs for added comfort when putting on and taking off.*



**100**

BLACK



**300**

DARK NAVY



**600**

RED



**700**

ROYAL





# RECORD PRO

RUNNING



## TRACKSUIT TOP

2027



SR 902530. S / M / L / XL

JR 902530. 12 (2XS) / 14 (XS)

Microfiber  
100% Polyester  
Cotton feeling

Tejido cómodo y de alta durabilidad. Ajuste en rib en puños y bajo. Mangas raglán para mayor comodidad y libertad de movimiento. Bolsillos frontales con cremallera.

*Comfortable and highly durable fabric. Ribbed fit on cuffs and hem. Raglan sleeves for greater comfort and freedom of movement. Front zip pockets.*



**020**  
GREEN FLUOR



**100**  
BLACK



**200**  
WHITE



**300**  
DARK NAVY



**350**  
SKY BLUE



**450**  
GREEN MEDIUM



**474**  
KAKI



**600**  
RED



**700**  
ROYAL



**880**  
ORANGE



**900**  
YELLOW



# ELITE XII

## T-SHIRT

2027



SR 104510. S / M / L / XL / 2XL

JR 104510. 12 (2XS) / 14 (XS)

85% Polyester  
15% Spandex  
Antibacterial

Tejido elástico antibacteriano, desarrollado para alto rendimiento. Acabados en corte láser para prevenir rozaduras. Diseño sublimado en las mangas.

*Elastic antibacterial fabric, developed for high performance. Laser-cut finishes to prevent chafing. Sublimated design on the sleeves.*



**061**  
YELLOW FLUOR/  
BLACK



**102**  
BLACK/WHITE



**702**  
ROYAL/WHITE



**023**  
GREEN FLUOR/  
DARK NAVY



**201**  
WHITE/BLACK



**332**  
DARK NAVY/WHITE



**602**  
RED/WHITE

## T-SHIRT

2027



SR 902666. 14 (XS) / S / M / L / XL



**061**  
YELLOW FLUOR/  
BLACK



**102**  
BLACK/WHITE



**702**  
ROYAL/WHITE



**023**  
GREEN FLUOR/  
DARK NAVY



**201**  
WHITE/BLACK



**332**  
DARK NAVY/WHITE



**602**  
RED/WHITE



# ELITE XI

## SLEEVELES

2027



SR 103800. S / M / L / XL / 2XL

JR 103800. 12 (2XS) / 14 (XS)

85% Polyester  
15% Spandex  
Antibacterial

Camiseta de tirantes con cuello redondo y acabados en corte láser para prevenir rozaduras durante el ejercicio. Incluye pequeñas perforaciones en la espalda para mejor ventilación del sudor. Diseño sublimado. Logotipo Joma en printing.

*Sleeveless shirt with a round neckline and laser-cut finish in order to prevent any rubbing during exercise. Includes small perforations on the back for better sweat ventilation. Sublimated design. Joma logo in printing.*



**023**

GREEN FLUOR/  
DARK NAVY



**061**

YELLOW FLUOR/  
BLACK



**102**

BLACK/  
WHITE



**332**

DARK NAVY/  
WHITE



**602**

RED/  
WHITE



**702**

DARK ROYAL/  
WHITE

## SLEEVELES

2027



SR 902251. S / M / L / XL

JR 902251. 14 (XS)



**023**

GREEN FLUOR/  
DARK NAVY



**061**

YELLOW FLUOR/  
BLACK



**102**

BLACK/  
WHITE



**332**

DARK NAVY/  
WHITE



**602**

RED/  
WHITE



**702**

DARK ROYAL/  
WHITE

## TOP

2027



SR 902250. S / M / L

JR 902250. 14 (XS)

90% Polyester  
10% Spandex  
Antibacterial

Top con cuello redondo y espalda tipo nadadora. Con acabado elástico en cuello y sisa para mejor adaptación. Elaborado con tejido elástico y transpirable. Diseño sublimado. Logotipo Joma en printing.

*Tank-top with round neck and racerback. With elastic finish on neck and armholes for a better fit. Made with elastic and breathable fabric. Sublimated design. Joma logo in printing.*



**023**

GREEN FLUOR/  
DARK NAVY



**061**

YELLOW FLUOR/  
BLACK



**102**

BLACK/  
WHITE



**332**

DARK NAVY/  
WHITE



**602**

RED/  
WHITE



**702**

DARK ROYAL/  
WHITE



# ELITE XI



## TRACKSUIT TOP

2027



**SR 103803.** S / M / L / XL / 2XL

**JR 103803.** 12 (2XS) / 14 (XS)

Interlock  
95% Polyester  
5% Spandex  
Antibacterial

Sudadera con cremallera completa y mangas raglán para mayor libertad de movimiento. Elaborada con tejido elástico, costuras termoselladas para prevenir rozaduras y acabados en corte láser. Diseño sublimado en mangas. Logotipo Joma en printing.

*Full zip sweatshirt with raglan sleeves for greater freedom of movement. Made with elastic fabric, thermosealed seams to prevent any rubbing, and laser-cut finish. Sublimated design on sleeves. Joma logo in printing.*



**061**

YELLOW FLUOR/  
BLACK



**110**

BLACK/  
WHITE



**317**

DARK NAVY/  
GREEN FLUOR



**332**

DARK NAVY/  
WHITE



**600**

RED/  
BLACK



**700**

DARK ROYAL/  
WHITE



## LONG PANTS

2027



**SR 103814.** S / M / L / XL / 2XL

**JR 103814.** 12 (2XS) / 14 (XS)

Interlock  
95% Polyester  
5% Spandex  
Antibacterial

Pantalón largo con cinturilla elástica ajustable. Incorpora dos bolsillos laterales con cierre de cremallera. Elaborado con tejido elástico, costuras termoselladas para prevenir rozaduras y acabados en corte láser. Logotipo Joma en printing.

*Long pants with adjustable elastic waistband. Includes two side pockets with zipper closure. Made with elastic fabric, thermosealed seams to prevent any rubbing, and laser-cut finish. Joma logo in printing.*



**100**

BLACK



**331**

DARK NAVY





# ELITE XI

## TRACKSUIT TOP

2027



SR 902255. S / M / L / XL

JR 902255. 14 (XS)

Interlock  
95% Polyester  
5% Spandex  
Antibacterial

Sudadera con cremallera completa y mangas raglán para mayor libertad de movimiento. Elaborada con tejido elástico, costuras termoselladas para prevenir rozaduras y acabados en corte láser. Diseño sublimado en mangas. Logotipo Joma en printing.  
*Full zip sweatshirt with raglan sleeves for greater freedom of movement. Made with elastic fabric, thermosealed seams to prevent any rubbing, and laser-cut finish. Sublimated design on sleeves. Joma logo in printing.*



**061**

YELLOW FLUOR/  
BLACK



**110**

BLACK/  
WHITE



**317**

DARK NAVY/  
GREEN FLUOR



**332**

DARK NAVY/  
WHITE



**600**

RED/  
BLACK



**700**

DARK ROYAL/  
WHITE

## LONG PANTS

2027



SR 902256. S / M / L / XL

JR 902256. 14 (XS)

Interlock  
95% Polyester  
5% Spandex  
Antibacterial

Pantalón largo con cinturilla elástica ajustable. Incorpora dos bolsillos laterales con cierre de cremallera. Elaborado con tejido elástico, costuras termoselladas para prevenir rozaduras y acabados en corte láser. Logotipo Joma en printing.  
*Long pants with adjustable elastic waistband. Includes two side pockets with zipper closure. Made with elastic fabric, thermosealed seams to prevent any rubbing, and laser-cut finish. Joma logo in printing.*



**100**

BLACK



**331**

DARK NAVY





# ELITE XI



## HOODIE JACKET

2027



SR 103826. S / M / L / XL / 2XL

JR 103826. 12 (2XS) / 14 (XS)

Fleece  
90% Polyester  
10% Spandex  
Antibacterial

Sudadera con cremallera completa, capucha y dos bolsillos frontales sin cremallera. Elaborada con tejido elástico y fleece interior. Diseño sublimado en mangas. Logotipo Joma en printing.

*Full zip hoodie with hood and two front pockets without zipper. Made with elastic fabric and fleece interior. Sublimated design on sleeves. Joma logo in printing.*



**061**

YELLOW FLUOR/  
BLACK



**110**

BLACK/  
ANTHRACITE



**317**

DARK NAVY/  
GREEN FLUOR



**332**

DARK NAVY/  
WHITE



**600**

RED/  
BLACK



**700**

DARK ROYAL/  
WHITE



## HOODIE JACKET

2027



SR 902257. S / M / L / XL

JR 902257. 14 (XS)



**061**

YELLOW FLUOR/  
BLACK



**110**

BLACK/  
ANTHRACITE



**317**

DARK NAVY/  
GREEN FLUOR



**332**

DARK NAVY/  
WHITE



**600**

RED/  
BLACK



**700**

DARK ROYAL/  
WHITE





# RECORD II

## T-SHIRT

N.O.S



SR 102223. S / M / L / XL / 2XL

JR 102223. 8 (4XS) - 10 (3XS) / 12 (2XS) / 14 (XS)

Light interlock  
100% Polyester

Camiseta de tejido ligero. Cuello y mangas con corte al láser que evita rozaduras y aporta el máximo confort. Diseño y logotipo sublimados.

*T-shirt made of lightweight fabric and laser cut at the neck and underarm to prevent chafing. Sublimated design and logo.*



013

TURQIOSE FLUOR/  
DARK NAVY

021

GREEN FLUOR/  
BLACK

031

PINK FLUOR/  
BLACK

041

CORAL FLUOR/  
BLACK

102

BLACK/  
WHITE

207

WHITE/  
ROYAL



332

DARK NAVY/  
WHITE

452

GREEN MEDIUM/  
WHITE

602

RED/  
WHITE

609

RED/  
YELLOW

702

ROYAL/  
WHITE

725

BLUEBIRD/  
BLACK

901

YELLOW/  
BLACK



## T-SHIRT

N.O.S



SR 901398. S / M / L / XL / 2XL

JR 901398. 8 (4XS) - 10 (3XS) / 12 (2XS) / 14 (XS)



013

TURQIOSE FLUOR/  
DARK NAVY

021

GREEN FLUOR/  
BLACK

031

PINK FLUOR/  
BLACK

041

CORAL FLUOR/  
BLACK

102

BLACK/  
WHITE

207

WHITE/  
ROYAL



332

DARK NAVY/  
WHITE

452

GREEN MEDIUM/  
WHITE

602

RED/  
WHITE

609

RED/  
YELLOW

702

ROYAL/  
WHITE

725

BLUEBIRD/  
BLACK

901

YELLOW/  
BLACK



# RECORD II



## SLEEVELES

N.O.S



SR 102222. S / M / L / XL / 2XL

JR 102222. 8 (4XS) - 10 (3XS) / 12 (2XS) / 14 (XS)

Light interlock  
100% Polyester

Camiseta de tirantes con corte al láser en cuello y sisas que evita rozaduras y aporta el máximo confort. Diseño con estampado y logotipo sublimados.

T-shirt made of lightweight fabric and laser cut at the neck and underarm to prevent chafing. Designed with sublimated print and logo.



013

TURQUOISE FLUOR/  
DARK NAVY



021

GREEN FLUOR/  
BLACK



031

PINK FLUOR/  
BLACK



041

CORAL FLUOR/  
BLACK



102

BLACK/  
WHITE



207

WHITE/  
ROYAL



702

ROYAL/  
WHITE



332

DARK NAVY/  
WHITE



452

GREEN MEDIUM/  
WHITE



602

RED/  
WHITE



609

RED/  
YELLOW



725

BLUEBIRD/  
BLACK




901

YELLOW/  
BLACK



# RECORD II

## SLEEVELES N.O.S

 **SR 901396.** S / M / L / XL / 2XL  
**JR 901396.** 8 (4XS) - 10 (3XS) / 12 (2XS) / 14 (XS)

Light interlock  
100% Polyester

Camiseta de tirantes con corte al láser en cuello y sisas que evita rozaduras y aporta el máximo confort. Diseño con estampado y logotipo sublimados.  
*T-shirt made of lightweight fabric and laser cut at the neck and underarm to prevent chafing. Designed with sublimated print and logo.*



**013** TURQUOISE FLUOR/  
DARK NAVY     **021** GREEN FLUOR/  
BLACK     **031** PINK FLUOR/  
BLACK     **041** CORAL FLUOR/  
BLACK     **102** BLACK/  
WHITE     **207** WHITE/  
ROYAL



**332** DARK NAVY/  
WHITE     **452** GREEN MEDIUM/  
WHITE     **602** RED/  
WHITE     **609** RED/  
YELLOW     **702** ROYAL/  
WHITE     **725** BLUEBIRD/  
BLACK     **901** YELLOW/  
BLACK



## TOP N.O.S

 **SR 901397.** S / M / L / XL  
**JR 901397.** 8 (4XS) - 10 (3XS) / 12 (2XS) / 14 (XS)

90% Polyester  
10% Elastan  
Lining  
80% Polyester Mesh  
20% Spandex

Top de tirantes con detalles en la parte superior y los laterales creando contraste de color. Logotipo serigrافيado.  
*Tank top which features details on the top and sides creating colour contrast. Screen-printed logo.*



**013** TURQUOISE FLUOR/  
DARK NAVY     **021** GREEN FLUOR/  
BLACK     **031** PINK FLUOR/  
BLACK     **041** CORAL FLUOR/  
BLACK     **102** BLACK/  
WHITE     **207** WHITE/  
ROYAL



**332** DARK NAVY/  
WHITE     **452** GREEN MEDIUM/  
WHITE     **602** RED/  
WHITE     **609** RED/  
YELLOW     **702** ROYAL/  
WHITE     **725** BLUEBIRD/  
BLACK     **901** YELLOW/  
BLACK



# RECORD II



## T-SHIRT

N.O.S



SR 102227. S / M / L / XL / 2XL

JR 102227. 8 (4XS) - 10 (3XS) / 12 (2XS) / 14 (XS)

Light interlock  
100% Polyester

Camiseta confeccionada en tejido ligero. Logotipo serigráfico.

Joma Sport T-shirt created from a lightweight and breathable fabric. It features printed Joma logo on chest with a crew neck collar.



**200**

WHITE

**010**

TURQUOISE FLUOR

**020**

GREEN FLUOR

**030**

PINK FLUOR

**040**

CORAL FLUOR

**100**

BLACK



**331**

DARK NAVY

**450**

GREEN MEDIUM

**600**

RED

**700**

ROYAL

**725**

BLUEBIRD

**900**

YELLOW



## T-SHIRT

N.O.S



SR 901400. S / M / L / XL / 2XL

JR 901400. 8 (4XS) - 10 (3XS) / 12 (2XS) / 14 (XS)



**331**

DARK NAVY

**010**

TURQUOISE FLUOR

**020**

GREEN FLUOR

**030**

PINK FLUOR

**040**

CORAL FLUOR

**100**

BLACK



**200**

WHITE

**450**

GREEN MEDIUM

**600**

RED

**700**

ROYAL

**725**

BLUEBIRD

**900**

YELLOW





# COMBI RUNNING

SWEATSHIRT **N.O.S**



**SR 102241.** S / M / L / XL / 2XL

**JR 102241.** 8 (4XS) - 10 (3XS) / 12 (2XS) / 14 (XS)

Fleece  
100% Polyester

Sudadera con media cremallera. Los puños son elásticos para mayor ajuste. Logotipo estampado.

*Half-zip sweatshirt comes with printed logo and elastic cuffs providing maximum comfort.*



**010**  
TURQUOISE FLUOR



**020**  
GREEN FLUOR



**040**  
DARK ORANGE FLUOR



**060**  
YELLOW FLUOR



**100**  
BLACK



**200**  
WHITE



**331**  
DARK NAVY



**450**  
GREEN MEDIUM



**700**  
ROYAL



**600**  
RED



# COMBI RUNNING



RAINCOAT

N.O.S



SR 102235. S / M / L / XL / 2XL

100% Poliéster  
Micro  
100% Polyester  
Micro

Chubasquero abierto con cremallera, incluye bolsillos y capucha ajustable mediante cordón. Logotipo en tejido reflectante para aumentar la visibilidad. Nivel de impermeabilidad: 3.000 mm.

*Open raincoat with zipper comes with pockets and adjustable drawstring hood. The garment features reflective logo to increase visibility. Waterproof rating: 3,000 mm.*



**020**

GREEN FLUOR



**040**

DARK ORANGE FLUOR



**100**

BLACK



**331**

DARK NAVY



**700**

ROYAL



# NATURE



RAINCOAT

N.O.S



SR 102518. S / M / L / XL / 2XL

100% Polyamide

Tejido waterproof 10.000 mm, resistente a lluvia prolongada y fuerte. Sistema de ventilación en la espalda. Capucha ergonómica. Ajuste elástico en bajo y puños. Detalles reflectantes 360°.

*Waterproof fabric 10,000 mm, resistant to prolonged and heavy rain. Ventilation system on the back. Ergonomic hood. Elastic adjustment at the bottom and cuffs. 360° reflective details.*



**020**

GREEN FLUOR



**100**

BLACK



**728**

DARK ROYAL



SR 901528. S / M / L / XL  
14 (XS)



**020**

GREEN FLUOR



**100**

BLACK



**581**

VIOLET





# COMBI RUNNING



SHORT

N.O.S



SR 102226. S / M / L / XL / 2XL

JR 102226. 8 (4XS) - 10 (3XS) / 12 (2XS) / 14 (XS)

Interlock  
100% Polyester

Short con cintura elástica ajustable mediante cordones. Su ligereza y la abertura lateral en el bajo proporcionan libertad de movimiento. Incluye bolsillo interior. Logotipo serigrafiado.

*Shorts with adjustable elastic waistband. It's lightness and the lateral opening at the bottom provide freedom of movement. Includes interior pocket. Screen-printed logo.*

29 cm.  
size M



**700**  
ROYAL



**100**  
BLACK



**331**  
DARK NAVY



**450**  
GREEN MEDIUM



**600**  
RED

# OLIMPIA



SHORT

N.O.S



SR 100815. S / M / L / XL

JR 100815. 8 (4XS) - 10 (3XS) / 12 (2XS) / 14 (XS)

Microfiber  
95% Polyester  
5% Elastane

Pantalón corto dirigido a la competición con bolsillo interior y corte láser en el bajo. Cintura elástica ajustable con cordón. Logo J bordado.

*Competition shorts with inside pocket and laser cut at the lower part. Adjustable elastic drawstring waist. Embroidered J logo.*

21,5 cm.  
size M



**020**  
GREEN FLUOR



**040**  
DARK ORANGE FLUOR



**060**  
YELLOW FLUOR



**100**  
BLACK



**331**  
DARK NAVY



**450**  
GREEN MEDIUM



**600**  
RED



**700**  
ROYAL



**722**  
DARK ROYAL



# RECORD III



## SHORT TIGHTS

N.O.S



SR 103489. S / M / L / XL / 2XL

JR 103489. 8 (4XS) / 10 (3XS) / 12 (2XS) / 14 (XS)

90% Poliamida  
10% Elastano  
90% Polyamide  
10% Elastan

Tejido elástico y de secado rápido para eliminar la humedad rápidamente. Costuras Flatlock para evitar rozaduras. Cintura elástica ajustable.

Elastic and quick-drying fabric to quickly remove moisture. Flatlock seams to prevent chafing. Adjustable elastic waist.



100  
BLACK



300  
DARK NAVY



450  
GREEN MEDIUM



600  
RED



700  
ROYAL



## LONG TIGHTS

N.O.S



SR 103490. S / M / L / XL / 2XL

JR 103490. 8 (4XS) / 10 (3XS) / 12 (2XS) / 14 (XS)

90% Poliamida  
10% Elastano  
90% Polyamide  
10% Elastan

Tejido elástico y de secado rápido para eliminar la humedad rápidamente. Costuras Flatlock para evitar rozaduras. Bajos con cremallera bloqueable.

Elastic and quick-drying fabric to quickly remove moisture. Flatlock seams to prevent chafing. Adjustable elastic waist. Lockable zippered cuffs.



100  
BLACK



300  
DARK NAVY



450  
GREEN MEDIUM



600  
RED



700  
ROYAL



## 3/4 TIGHTS

N.O.S



SR 100089. S / M / L / XL

JR 100089. 8 (4XS) - 10 (3XS) / 12 (2XS) / 14 (XS)

92% Poliamida  
8% Elastano  
92% Polyamide  
8% Elastan

Malla pirata que incorpora costuras planas en zonas estratégicas para evitar rozamientos. Incluye un bolsillo interior en la parte delantera para poder guardar objetos con seguridad. Logotipo serigrafado.

Capri tights incorporating flat seams in strategic areas to prevent chafing. Include a front inner pocket to keep small objects safe. Screen-printed logo.

60 cm.  
size M



100  
BLACK



300  
NAVY



600  
RED



700  
ROYAL





# OLIMPIA

92% Poliamida  
8% Elastano  
92% Polyamide  
8% Elastan

## LONG TIGHTS

N.O.S



SR **900447.** S / M / L / XL / 2XL

JR **900447.** 8 (4XS) - 10 (3XS) / 12 (2XS) / 14 (XS)

SR **900447.**

JR **900447.**

Malla larga que incorpora costuras planas en zonas estratégicas para evitar rozamientos. Cintura elástica para aumentar su comodidad. Logotipo serigrafiado.

*Long tights with flat seams in strategic areas to prevent chafing. Elastic waist to increase comfort. Screen-printed logo.*



**100**  
BLACK



**300**  
NAVY



**600**  
RED



**700**  
ROYAL

## 3/4 TIGHTS

N.O.S



SR **900448.** S / M / L / XL / 2XL

JR **900448.** 8 (4XS) - 10 (3XS) / 12 (2XS) / 14 (XS)

SR **900448.**

JR **900448.**

Malla pirata que incorpora costuras planas en zonas estratégicas para evitar rozamientos. Cintura elástica para aumentar su comodidad. Logotipo serigrafiado.

*3/4 tights incorporating flat seams in strategic areas to prevent chafing. Elastic waist to increase comfort. Screen-printed logo.*



**100**  
BLACK



**300**  
NAVY



**600**  
RED



**700**  
ROYAL

## 3/4 TIGHTS

N.O.S



SR **900760.** S / M / L / XL

JR **900760.** 8 (4XS) - 10 (3XS) / 12 (2XS) / 14 (XS)

Malla corta que incorpora costuras planas en zonas estratégicas para evitar rozamientos. Cintura elástica para una mayor comodidad. Logotipo serigrafiado.

*Short tights with flat seams in strategic areas to prevent chafing. Elastic waist to improve comfort. Screen-printed logo.*

21 cm.  
Size M



**100**  
BLACK



**331**  
NAVY



**600**  
RED



**700**  
ROYAL

## BRIEF

N.O.S



SR **901669.** S / M / L / XL / 2XL

JR **901669.** 8 (4XS) - 10 (3XS) / 12 (2XS) / 14 (XS)

80% Poliamida  
20% Elastano  
80% Polyamide  
20% Elastan

Braga deportiva Olimpia II. Proporciona una perfecta protección y comodidad. Resistente al sudor, ligera, suave y flexible. Se caracteriza por otorgar una gran libertad de movimientos, así como sujeción y confort. Incluye forro interior en la parte delantera para mayor protección. Logotipo serigrafiado.

*Olimpia II sports neck warmer. Provides perfect protection and comfort. Sweat resistant, light, soft and flexible, providing great freedom of movement, as well as support and comfort. Includes inner lining in the front for greater protection. Screen-printed logo.*



**010**  
TURQUOISE  
FLUOR



**040**  
DARK ORANGE  
FLUOR



**100**  
BLACK



**331**  
DARK NAVY



**450**  
GREEN MEDIUM



**600**  
RED



**700**  
ROYAL



**722**  
DARK ROYAL



# TRAIL

## TROUSERS N.O.S

**SR 101353.** S / M / L / XL / 2XL

Microfiber  
95% Polyester  
5% Elastane

Pantalón multibolsillos en la cintura. Doble ajuste con elástico y cordón. Logotipo en printing.  
*Short with multi-pockets on the waist. Dual adjustment with elastic and drawstring. Printed logo.*



# TRAIL

## SHORT N.O.S

**SR 103165.** S / M / L / XL / 2XL

Microfiber  
95% Polyester  
5% Elastane

Tejido ligero y elástico. Acabados en corte láser para evitar rozaduras. Bolsillos de cinturilla en mesh. Bolsillo trasero con cremallera bloqueable. Logotipo reflectante.  
*Lightweight and stretchy fabric. Laser-cut finishes to prevent chafing. Mesh waist pockets. Lockable rear zip pocket. Reflective logo.*





# TRAIL

## SHORT

N.O.S



SR 901838.

S / M / L / XL  
14 (XS)

Microfiber  
95% Polyester  
5% Elastane

Tejido ultraligero y elástico. Cinturilla elástica ajustable con cordón. Bolsillos de avituallamiento en la cintura. Aberturas laterales para mayor movilidad.

*Ultralight and stretchy fabric. Adjustable elastic waistband with drawstring. Fuel pockets on the waist. Side openings for greater mobility.*



**100**  
BLACK

**331**  
DARK NAVY

## SHORT TIGHTS

N.O.S



SR 901835.

S / M / L / XL  
14 (XS)

77% Polyester  
23% Spandex

Tejido elástico. Ajuste ergonómico. Cintura con bolsillos de avituallamiento. Bolsillo trasero con cierre de cremallera bloqueable. Costuras planas FLATLOCK.

*Elastic fabric. Ergonomic fit. Waist with fuel pockets. Lockable zippered back pocket. FLATLOCK flat seams.*



**100**  
BLACK

**331**  
DARK NAVY

## SKIRT

N.O.S



SR 901834.

S / M / L / XL  
14 (XS)

95% Polyester  
5% Elastane

Tejido ultraligero. Bolsillos de avituallamiento en la cintura. Bolsillo trasero con cierre de cremallera bloqueable. Terminaciones en corte láser. Malla elástica interior con costuras planas FLATLOCK.

*Ultralight fabric. Fueling pockets on the waist. Lockable zippered back pocket. Laser-cut finishes. Elastic inner mesh with flatlock seams.*



**100**  
BLACK

**331**  
DARK NAVY





## SWIMMING



# SHARK III



## SWIM PANTS

N.O.S



SR 103843. S / M / L / XL

80% Polyamide  
20% Elastane

Bañador tipo boxer. Ajuste y libertad de movimiento excelentes gracias al tejido elástico. Fabricación con material de secado rápido y alta resistencia al cloro. Cinturilla con cordón elástico interior. Logotipo Joma en printing.

*Boxer-style swimsuit. Excellent fit and freedom of movement thanks to its elastic fabric. Made with quick-drying material and high resistance to chlorine. Waistband with elastic drawstring. Joma logo in printing.*



**700**  
ROYAL



**100**  
BLACK



**600**  
RED



**331**  
DARK NAVY



## SLIP SWIMSUIT

N.O.S



SR 103842. S / M / L / XL

SR 103842. 8 (4XS) / 10 (3XS) / 12 (2XS) / 14 (XS)

80% Polyamide  
20% Elastane

Bañador tipo slip. Ajuste y libertad de movimiento excelentes gracias al tejido elástico. Fabricación con material de secado rápido y alta resistencia al cloro. Cinturilla con cordón elástico interior. Logotipo Joma en printing.

*Slip type swimsuit. Excellent fit and freedom of movement thanks to its elastic fabric. Made with quick-drying material and high resistance to chlorine. Waistband with elastic drawstring. Joma logo in printing.*



**700**  
ROYAL



**100**  
BLACK



**600**  
RED



**331**  
DARK NAVY



## SWIMSUIT

N.O.S



SR 902268. S / M / L / XL

SR 902268. 8 (4XS) / 10 (3XS) / 12 (2XS) / 14 (XS)

80% Polyamide  
20% Elastane

Bañador. Ajuste y libertad de movimiento excelentes gracias al tejido elástico. Fabricación con material de secado rápido y alta resistencia al cloro. Cuello redondo y espalda tipo nadadora. Logotipo Joma en printing.

*Swimsuit. Excellent fit and freedom of movement thanks to its elastic fabric. Made with quick-drying material and high chlorine resistance. Round neck and racerback. Joma logo in printing.*



**700**  
ROYAL



**100**  
BLACK



**600**  
RED



**331**  
DARK NAVY



SWIMMING





# BAÑO



## SWIM PANTS

2027



SR 104400.S / M / L / XL

80% Polyamide  
20% Elastane

Bañador tipo boxer. Tejido elástico y de secado rápido para eliminar la humedad rápidamente. Ajuste ergonómico para mayor comodidad y libertad de movimiento. Cintura elástica.

*Elastic and quick-drying fabric to quickly remove moisture. Ergonomic fit for greater comfort and freedom of movement. Elastic waist.*



**100**  
BLACK



**331**  
DARK NAVY



**600**  
RED



**700**  
ROYAL



# BAÑO



## SLIP SWIMSUIT

2027



SR 104399.S / M / L / XL

JR 104399.8 (4XS) / 10 (3XS) / 12 (2XS) / 14 (XS)

80% Polyamide  
20% Elastane

Bañador tipo slip. Tejido elástico y de secado rápido para eliminar la humedad rápidamente. Ajuste ergonómico para mayor comodidad y libertad de movimiento. Cintura elástica.

*Elastic and quick-drying fabric to quickly remove moisture. Ergonomic fit for greater comfort and freedom of movement. Elastic waist.*



**100**  
BLACK



**331**  
DARK NAVY



**600**  
RED



**700**  
ROYAL





# BAÑO



SWIMSUIT

2027



SR 902566.S / M / L / XL

JR 902566.8 (4XS) / 10 (3XS) / 12 (2XS) / 14 (XS)

80% Polyamide  
20% Elastane

Bañador. Tejido elástico y de secado rápido para eliminar la humedad rápidamente. Ajuste ergonómico para mayor comodidad y libertad de movimiento. Espalda nadadora.

*Elastic and quick-drying fabric to quickly remove moisture. Ergonomic fit for greater comfort and freedom of movement. Racerback.*



**700**  
ROYAL



**100**  
BLACK



**600**  
RED



**331**  
DARK NAVY



# BAÑO



SWIMSUIT

2027



SR 902567.S / M / L / XL

80% Polyamide  
20% Elastane

Bañador. Tejido elástico y de secado rápido para eliminar la humedad rápidamente. Ajuste ergonómico para mayor comodidad y libertad de movimiento.

*Stretchy and quick-drying fabric to quickly remove moisture. Ergonomic fit for greater comfort and freedom of movement.*

CREMALLERA  
ZIPPER



**700**  
ROYAL



**100**  
BLACK



**600**  
RED



**331**  
DARK NAVY



# BATHROBE

 MICRO-BATHROBE

PACK 5



SR 400534. XS / M / XL

Microfiber  
100% Polyester

Albornoz con bolsa de  
microfibra.

*Bathrobe with microfiber bag.*



331



# TOWEL

 MICROFIBER TOWEL

PACK 6

400533.

Microfibra 210 gr.  
Microfiber 210 gr.

Toalla.  
Towel.



70 cm



331

# SANDAL

 SHOWER SANDAL

INDIVIDUAL

SCOSTS2503

36 - 47

Sandalia para ducha.  
Shower sandal.



SCOSTS2503





RACKET SPORT

## RACKET SPORTS





# TERRA DANUBIO



## T-SHIRT

2028



SR 105144. S / M / L / XL / 2XL / 3XL

SR 105144. 4 (6XS) / 6 (5XS) / 8 (4XS) / 10 (3XS) / 12 (2XS) / 14 (XS)

100% Polyester

Tejido cómodo y de alta durabilidad. Acabado en jacquard para mayor transpirabilidad. Cuello redondo en tejido base.  
*Comfortable and highly durable fabric. Jacquard finish for increased breathability. Round neck in base fabric.*



**013**

TURQUOISE FLUOR/  
DARK NAVY/WHITE



**342**

DARK NAVY/TURQUOISE  
FLUOR/WHITE



**501**

RASPBERRY/  
BLACK/WHITE



**205**

WHITE/  
RASPBERRY/BLACK



**426**

LIME PUNCH/  
DARK NAVY/WHITE



**326**

DARK NAVY/  
LIME PUNCH/WHITE



**703**

ROYAL/DARK NAVY/  
WHITE



**207**

WHITE//ROYAL/  
DARK NAVY



# TERRA DANUBIO



## POLO

2028



SR 105215. S / M / L / XL / 2XL / 3XL

100% Polyester

Tejido técnico con acabado en jacquard para mayor transpirabilidad. Cuello abotonado tipo polo. Aberturas inferiores para mayor movilidad.  
*Technical fabric with jacquard finish for increased breathability. Buttoned polo collar. Lower openings for increased mobility.*



**013**

TURQUOISE FLUOR/  
DARK NAVY/WHITE



**342**

DARK NAVY/TURQUOISE  
FLUOR/WHITE



**501**

RASPBERRY/  
BLACK/WHITE



**205**

WHITE/  
RASPBERRY/BLACK



**426**

LIME PUNCH/  
DARK NAVY/WHITE



**326**

DARK NAVY/  
LIME PUNCH/WHITE



**703**

ROYAL/DARK NAVY/  
WHITE



**207**

WHITE//ROYAL/  
DARK NAVY





# TERRA DANUBIO



T-SHIRT

2028



SR 903106. S / M / L / XL / 2XL

JR 903106. 12 (2XS) / 14 (XS)

100% Polyester

Tejido técnico con acabado en jacquard para mayor transpirabilidad. Cuello redondo en tejido base.  
Technical fabric with jacquard finish for increased breathability. Round neckline from base fabric.



013

TURQUOISE FLUOR/  
DARK NAVY/WHITE



342

DARK NAVY/TURQUOISE  
FLUOR/WHITE



501

RASPBERRY/  
BLACK/WHITE



205

WHITE/  
RASPBERRY/BLACK



426

LIME PUNCH/  
DARK NAVY/WHITE



326

DARK NAVY/  
LIME PUNCH/WHITE



703

ROYAL/DARK NAVY/  
WHITE



207

WHITE//ROYAL/  
DARK NAVY

# TERRA DANUBIO



SLEEVELES

2028



SR 903078. S / M / L / XL / 2XL

JR 903078. 12 (2XS) / 14 (XS)

Jacquard  
100% Polyester

Tejido técnico con acabado en jacquard para mayor transpirabilidad. Espalda nadadora y cuello redondo.  
Technical fabric with jacquard finish for enhanced breathability. Racerback and round neckline.



013

TURQUOISE FLUOR/  
DARK NAVY/WHITE



342

DARK NAVY/TURQUOISE  
FLUOR/WHITE



501

RASPBERRY/  
BLACK/WHITE



205

WHITE/  
RASPBERRY/BLACK



426

LIME PUNCH/  
DARK NAVY/WHITE



326

DARK NAVY/  
LIME PUNCH/WHITE



703

ROYAL/DARK NAVY/  
WHITE



207

WHITE//ROYAL/  
DARK NAVY



# TERRA DANUBIO



## TRACKSUIT

2028



SR 105055. S / M / L / XL / 2XL / 3XL

JR 105055. 4 (6XS) / 6 (5XS) / 8 (4XS) / 10 (3XS) / 12 (2XS) / 14 (XS)

Interlock  
100% Polyester

Tejido cómodo y de alta durabilidad. Sudadera con cremallera y rib en puños y cintura. Pantalón largo con cintura elástica y cordón interior. Bolsillos con cremallera en ambas prendas.

*Comfortable and highly durable fabric. Zip-up sweatshirt with ribbed cuffs and waistband. Full length pants with elastic waistband and inner drawstring. Zip pockets on both garments.*



013

TURQUOISE FLUOR/  
DARK NAVY/WHITE



205

WHITE/  
RASPBERRY/BLACK



326

DARK NAVY/  
LIME PUNCH/WHITE



703

ROYAL/DARK NAVY/  
WHITE



# TERRA DANUBIO



## SHORT

2028



SR 105216. S / M / L / XL / 2XL / 3XL

JR 105216. 4 (6XS) / 6 (5XS) / 8 (4XS) / 10 (3XS) / 12 (2XS) / 14 (XS)

Interlock  
100% Polyester

Tejido cómodo y de alta durabilidad. Cintura elástica con cordón interior. Aberturas inferiores para mayor movilidad. Bolsillos sin cremallera.

*Comfortable and highly durable fabric. Elastic waistband with inner drawstring. Lower side openings for increased mobility. Pockets without a zip.*



013

TURQUOISE FLUOR/  
DARK NAVY/WHITE



216

WHITE/TURQUOISE  
FLUOR/DARK NAVY



105

BLACK/RASPBERRY/  
WHITE



205

WHITE/  
RASPBERRY/BLACK



426

LIME PUNCH/  
DARK NAVY/WHITE



326

DARK NAVY/  
LIME PUNCH/WHITE



703

ROYAL/DARK NAVY/  
WHITE



337

DARK NAVY/ROYAL/  
WHITE





# TERRA DANUBIO



## TRACKSUIT

2028



SR 903105. S / M / L / XL / 2XL

JR 903105. 12 (2XS) / 14 (XS)

Interlock  
100% Polyester

Tejido cómodo y de alta durabilidad. Sudadera con cremallera y rib en puños y cintura. Pantalón largo con cintura elástica y cordón interior. Bolsillos con cremallera en ambas prendas.

Comfortable and highly durable fabric. Zip-up sweatshirt with ribbed cuffs and waistband. Long pants with elastic waistband and internal drawstring. Zip pockets on both garments.



**013**

TURQUOISE FLUOR/  
DARK NAVY/WHITE



**205**

WHITE/  
RASPBERRY/BLACK



**326**

DARK NAVY/  
LIME PUNCH/WHITE



**703**

ROYAL/DARK NAVY/  
WHITE

# TERRA DANUBIO



## SHORT

2028



SR 903107. S / M / L / XL / 2XL

JR 903107. 12 (2XS) / 14 (XS)

Interlock  
100% Polyester

Tejido cómodo y de alta durabilidad. Cintura elástica con cordón interior. Bolsillos sin cremallera.

Comfortable and highly durable fabric. Elastic waistband with internal drawstring. Pockets without zips.



**013**

TURQUOISE FLUOR/  
DARK NAVY/WHITE



**216**

WHITE/TURQUOISE  
FLUOR/DARK NAVY



**105**

BLACK/RASPBERRY/  
WHITE



**205**

WHITE/  
RASPBERRY/BLACK



**426**

LIME PUNCH/  
DARK NAVY/WHITE



**326**

DARK NAVY/  
LIME PUNCH/WHITE



**703**

ROYAL/DARK NAVY/  
WHITE



**337**

DARK NAVY/ROYAL/  
WHITE





# OLIMPIADA



## T-SHIRT

N.O.S



SR 103245. S / M / L / XL / 2XL / 3XL / 4XL

JR 103245. 4 (6XS) / 6 (5XS) / 8 (4XS) / 10 (3XS) / 12 (2XS) / 14 (XS)

Interlock  
100% Polyester

Camiseta de manga corta. Presenta cuello redondo en tejido base. Elaborada 100% con poliéster reciclado, un tejido ecológico, ligero, resistente y transpirable. Diseño con detalles personalizados y logotipo Joma bordado.

Short-sleeved shirt. Featuring a round neckline in the base fabric. Made with 100% recycled polyester, an ecological, lightweight, resistant, and breathable fabric. Design with personalized details and embroidered Joma logo.



**013**  
TURQUOISE FLUOR/  
DARK NAVY



**021**  
GREEN FLUOR/  
BLACK



**100**  
BLACK



**106**  
BLACK/RED



**107**  
BLACK/ROYAL



**200**  
WHITE



**251**  
LIGHT MELANGE



**331**  
DARK NAVY



**339**  
DARK NAVY/  
YELLOW



**501**  
RASPBERRY/  
BLACK



**422**  
CABBAGE/  
BLACK



**450**  
GREEN MEDIUM



**671**  
RUBY



**600**  
RED



**700**  
ROYAL



**881**  
ORANGE



**901**  
YELLOW



# OLIMPIADA



RACKET SPORT

## SLEEVELESS

N.O.S



SR 902664. S / M / L / XL / 2XL

JP 902664. 12 (2XS) / 14 (XS)

Interlock  
100% Polyester

Tejido confortable y de alta durabilidad. Vivo elástico en cuello, sisa y espalda para conseguir mejor ajuste. Espalda tipo nadadora.

Comfortable and highly durable fabric. Elastic trim on neckline, armholes, and back for a better fit. Racerback style back.



**013**  
TURQUOISE FLUOR/  
DARK NAVY



**021**  
GREEN FLUOR/  
BLACK



**100**  
BLACK



**200**  
WHITE



**106**  
BLACK/RED



**107**  
BLACK/ROYAL



**251**  
LIGHT MELANGE



**331**  
DARK NAVY



**339**  
DARK NAVY/  
YELLOW



**501**  
RASPBERRY/  
BLACK



**422**  
CABBAGE/  
BLACK



**450**  
GREEN MEDIUM



**600**  
RED



**700**  
ROYAL



SHORT

N.O.S

# MASTER



SR 100186. S / M / L / XL / 2XL

Microfiber  
95% Polyester  
5% Elastane

Shorts de tenis dirigidos a la competición realizados en microfibra con elastán. Con cintura elástica ajustable con cordones y bolsillos laterales.

*Competition tennis shorts made of microfibre with elastane. Adjustable elastic drawstring waist and side pockets.*

46 cm.  
size M



100  
BLACK

BOLSILLO  
POCKET



726  
ROYAL



200  
WHITE



331  
NAVY



SHORT

N.O.S

# DRIVE



SR 100438. S / M / L / XL / 2XL / 3XL

JR 100438. 4 (6XS) / 6 (5XS) / 8 (4XS) / 10 (3XS) / 12 (2XS) / 14 (XS)

Interlock  
100% Polyester

Shorts de tenis dirigidos a la competición realizados en tejido de punto. Cintura elástica, ajustable con cordones. Con bolsillos laterales.

*Tennis shorts aimed at competition in knitted fabric. Adjustable elastic drawstring waist. With side pockets.*

46 cm.  
size M



100  
BLACK

Bolsillo  
Pocket



700  
ROYAL



331  
DARK NAVY



200  
WHITE



600  
RED



SKIRT

N.O.S

# KATTY



SR 900812. S / M / L / XL / 2XL

JR 900812. 12 (2XS) / 14 (XS)

Interlock  
100% Polyester  
Shorts  
85% Polyester  
15% Elastane

Falda de tenis con pantalón interior. Incorpora vivos delanteros a contraste. Logotipo J bordado.

*Tennis skirt with integral shorts. With contrasting piping on the front. Embroidered J logo.*

35 cm.  
Size M



100  
BLACK



331  
DARK NAVY



200  
WHITE





# OPEN II



SKIRT

N.O.S



SR 900759. S / M / L / XL / 2XL - 3XL

JR 900759. 8 (4XS) - 10 (3XS) / 12 (2XS) / 14 (XS)



80% Polyester  
20% Elastan  
Shorts  
95% Polyester  
5% Elastan

Falda con pantalón interior que se caracteriza por su comodidad y su cintura elástica para un mejor ajuste.  
*Skirt with underwear short characterised by its comfort and elastic waist for better fit.*



30 cm.  
Size M



600  
RED



100  
BLACK



200  
WHITE



331  
DARK NAVY



700  
ROYAL

# TORNEO



SKIRT

N.O.S



SR 902073. S / M / L / XL / 2XL

JR 902073. 8 (4XS) / 10 (3XS) / 12 (2XS) / 14 (XS)



90% Polyester  
10% Spandex  
Shorts  
82% Polyester  
18% Spandex

Tejido cómodo y de alta durabilidad. Cintura elástica. Aberturas laterales para mayor libertad de movimiento. Malla interior elástica, elaborada con costuras planas FLATLOCK.

*Comfortable and highly durable fabric. Elastic waistband. Side openings for greater freedom of movement. Elastic inner mesh, made with FLATLOCK flat seams.*



35 cm.  
Size M



600  
RED



100  
BLACK



200  
WHITE



331  
DARK NAVY



726  
ROYAL

# TORNEO III



SKIRT

N.O.S



SR 901295. 14 (XS) / S / M / L / XL



85% Polyester  
15% Spandex  
Shorts  
85% Polyester  
15% Elastan

Falda corta con short interior. Cuenta con bolsillo en el short para la pelota de tenis. Logotipo estampado.  
*Tennis skirt with integral shorts that includes a pocket for the tennis ball. Printed logo.*

33 cm.  
Size M



102  
BLACK/WHITE



332  
DARK NAVY/WHITE



200  
WHITE





## TRAINING

