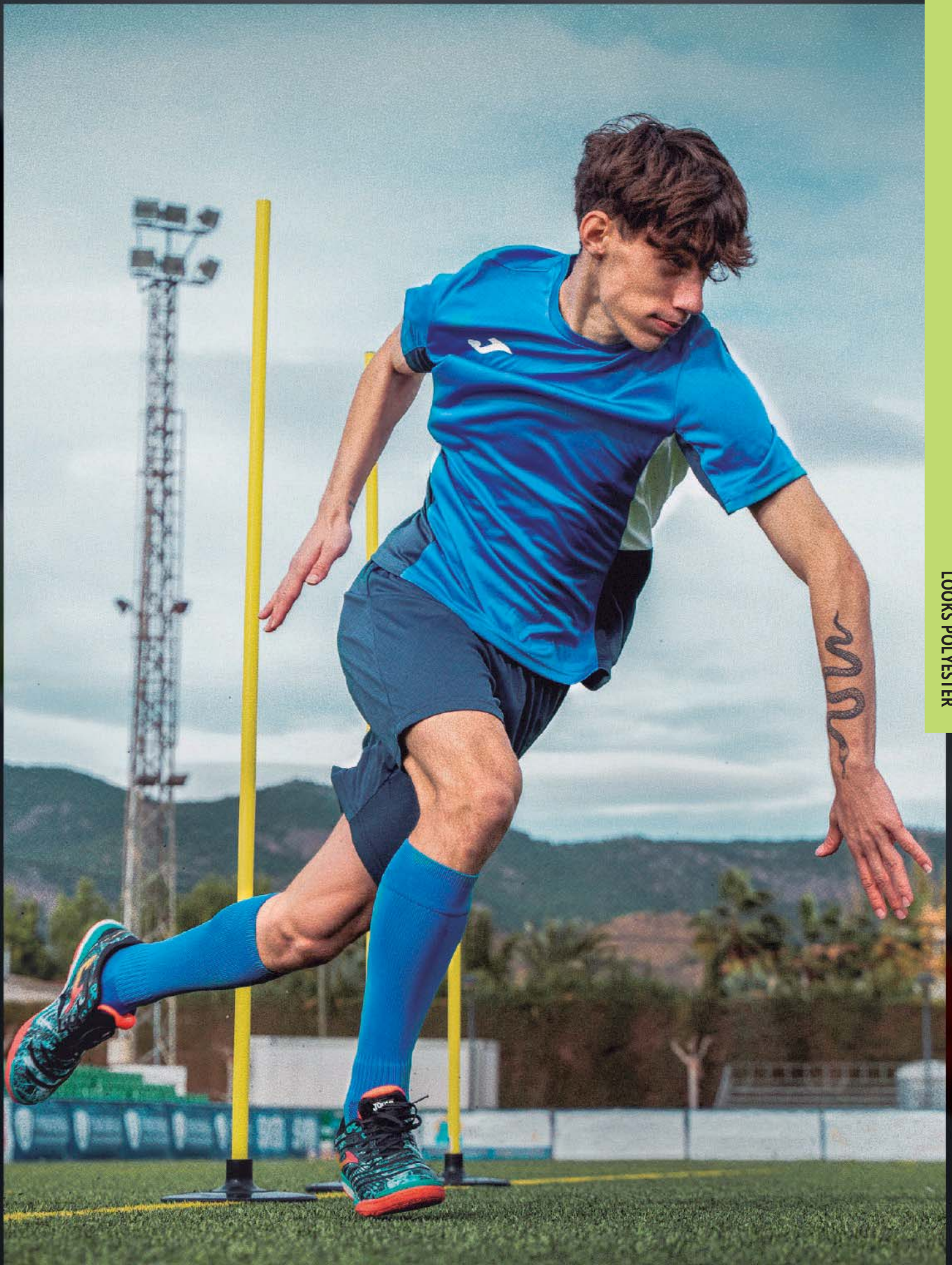


## TRAINING





LOOKS POLYESTER



# VINTAGE. ECO-RETRO



## T-SHIRT

2027



SR 105073. S / M / L / XL / 2XL / 3XL

JR 105073. 4 (6XS) / 6 (5XS) / 8 (4XS) / 10 (3XS) / 12 (2XS) / 14 (XS)

Jacquard  
100% Recycled  
polyester

Tejido efecto satinado con tecnología Micro-Mesh System situada en zonas de mayor sudoración. Diseño vintage de inspiración retro. Cuello tipo polo en rib. Puños en canalé.

*Satin-effect fabric with Micro-Mesh System technology in high perspiration areas. Vintage design inspired by retro style. Ribbed polo style collar. Ribbed cuffs.*



**111**  
BLACK/  
ANTHRACITE



**201**  
WHITE/  
BLACK



**251**  
LIGHT MELANGE/  
BLACK



**332**  
DARK NAVY



**352**  
SKY/  
WHITE



**452**  
GREEN MEDIUM/  
WHITE



**552**  
VIOLET/  
WHITE



**602**  
RED/  
WHITE



**603**  
RED/  
DARK NAVY



**702**  
ROYAL/  
WHITE



**882**  
ORANGE/  
WHITE



**907**  
YELLOW/  
ROYAL



## SHORT

2027



SR 104980. S / M / L / XL / 2XL / 3XL

JR 104980. 4 (6XS) / 6 (5XS) / 8 (4XS) / 10 (3XS) / 12 (2XS) / 14 (XS)

Jacquard  
100% Recycled  
polyester

Tejido efecto satinado. Diseño vintage de inspiración retro. Cintura elástica con cordón interior.

*Satin effect fabric. Vintage design with retro inspiration. Elastic waistband with internal drawstring.*

46 cm.  
size M



**100**  
BLACK



**200**  
WHITE



**331**  
DARK NAVY



**600**  
RED



**700**  
ROYAL



# ECO RETRO

## TRACKSUIT TOP

2027



**SR 105074.** S / M / L / XL / 2XL / 3XL

**JR 105074.** 4 (6XS) / 6 (5XS) / 8 (4XS) / 10 (3XS) / 12 (2XS) / 14 (XS)

Jacquard  
100% Recycled  
polyester

Tejido efecto satinado. Diseño vintage de inspiración retro. Cierre con cremallera completa. Puños y cintura en rib. Mangas raglán. Bolsillos con cremallera.

*Satin effect fabric. Vintage design inspired by retro style. Full zip closure. Ribbed cuffs and waistband. Raglan sleeves. Zippered pockets.*



**111**  
BLACK



**211**  
WHITE



**251**  
LIGHT MELANGE/  
BLACK



**341**  
DARK NAVY



**361**  
SKY



**461**  
GREEN MEDIUM



**561**  
VIOLET



**603**  
RED/  
DARK NAVY



**611**  
RED



**711**  
ROYAL



**811**  
ORANGE



**907**  
YELLOW/  
ROYAL

## LONG PANTS

2027



**SR 104979.** S / M / L / XL / 2XL / 3XL

**JR 104979.** 4 (6XS) / 6 (5XS) / 8 (4XS) / 10 (3XS) / 12 (2XS) / 14 (XS)

Interlock shiny  
100% Polyester

Tejido cómodo y de alta durabilidad. Cintura elástica con cordón interior. Bajo con cremallera. Bolsillos con cierre de cremallera. Detalle ribeteado a contraste.

*Comfortable and highly durable fabric. Elastic waistband with internal drawstring. Zippered hem. Zippered pockets. Contrast trim detail.*



**100**  
BLACK



**331**  
DARK NAVY

LOOKS POLYESTER



# HEROIC



## T-SHIRT

2028



SR 105135. S / M / L / XL / 2XL / 3XL

JR 105135. 4 (6XS) / 6 (5XS) / 8 (4XS) / 10 (3XS) / 12 (2XS) / 14 (XS)

Interlock  
100% Polyester

Tejido confortable y de alta durabilidad. Mangas raglán para mayor ajuste y libertad de movimiento. Cuello y puños en rib.

Comfortable and highly durable fabric. Raglan sleeves for better fit and freedom of movement. Ribbed collar and cuffs.



**110**

ANTHRACITE/  
BLACK



**203**

WHITE/  
DARK NAVY



**331**

DARK NAVY



**471**

JUNE BUG



**601**

RED/  
BLACK



**680**

RUBY



**703**

ROYAL/  
DARK NAVY



SR 105368. S / M / L / XL / 2XL / 3XL

JR 105368. 4 (6XS) / 6 (5XS) / 8 (4XS) / 10 (3XS) / 12 (2XS) / 14 (XS)

Interlock  
100% Polyester

Tejido confortable y de alta durabilidad. Cintura elástica con cordón interior. Bolsillos con cremallera.

Comfortable and highly durable fabric. Stretch waistband with internal drawstring. Interior mesh pocket.



46 cm.  
size M

**100**

BLACK



**150**

ANTHRACITE



**200**

WHITE



**331**

DARK NAVY



**471**

JUNE BUG



**601**

RED



**680**

RUBY



**703**

ROYAL



# T-SHIRT

2028



# HEROIC



SR 903248. S / M / L / XL / 2XL

Interlock  
100% Polyester

Tejido cómodo y de alta durabilidad. Mangas raglán para mayor ajuste y libertad de movimiento. Cuello y puños en rib.  
*Comfortable and highly durable fabric. Raglan sleeves for better fit and freedom of movement. Ribbed collar and cuffs.*



**110**  
ANTHRACITE/  
BLACK



**203**  
WHITE/  
DARK NAVY



**331**  
DARK NAVY



**471**  
JUNE BUG



**601**  
RED/  
BLACK



**680**  
RUBY



**703**  
ROYAL/  
DARK NAVY



SR 903249. S / M / L / XL / 2XL

Interlock  
100% Polyester

Tejido cómodo y de alta durabilidad. Cintura elástica con cordón interior. Bolsillos con cremallera.  
*Comfortable and highly durable fabric. Elastic waistband with internal drawstring.*



46 cm.  
size M

**100**  
BLACK



**150**  
ANTHRACITE



**200**  
WHITE



**331**  
DARK NAVY



**471**  
JUNE BUG



**600**  
RED



**680**  
RUBY



**700**  
ROYAL

LOOKS POLYESTER



# HEROIC



## LONG PANTS

2028



**SR 105138.** S / M / L / XL / 2XL / 3XL

**JR 105138.** 4 (6XS) / 6 (5XS) / 8 (4XS) / 10 (3XS) / 12 (2XS) / 14 (XS)

Fleece  
100% Polyester

Tejido cálido y cómodo. Cintura elástica con cordón interior. Bolsillos con cremallera.  
Warm and comfortable fabric. Elastic waistband with inner drawstring. Zip pockets.



**100**  
BLACK



**150**  
ANTHRACITE



**331**  
DARK NAVY



**471**  
JUNE BUG



**680**  
WINE



**700**  
ROYAL



## BERMUDA

2028



**SR 105137.** S / M / L / XL / 2XL / 3XL

**JR 105137.** 4 (6XS) / 6 (5XS) / 8 (4XS) / 10 (3XS) / 12 (2XS) / 14 (XS)

Interlock  
100% Polyester

Tejido cómodo y de alta durabilidad. Cintura elástica con cordón interior. Bolsillos con cremallera.  
Comfortable and highly durable fabric. Elastic waistband with inner drawstring. Zip pockets.



**100**  
BLACK



**200**  
WHITE



**331**  
DARK NAVY



**150**  
ANTHRACITE



**471**  
JUNE BUG



**600**  
RED



**680**  
RUBY



**700**  
ROYAL





# HEROIC

## SWEATSHIRT

2028



**SR 105136.** S / M / L / XL / 2XL / 3XL

**JR 105136.** 4 (6XS) / 6 (5XS) / 8 (4XS) / 10 (3XS) / 12 (2XS) / 14 (XS)

Fleece  
100% Polyester

Tejido cálido y confortable. Mangas raglán para mayor ajuste y libertad de movimiento. Cuello, puños y cintura en rib.

*Warm and comfortable fabric. Raglan sleeves for a better fit and freedom of movement. Ribbed collar, cuffs, and waistband.*



**110**  
BLACK/  
WHITE



**203**  
WHITE/  
BLACK



**331**  
DARK NAVY/  
WHITE



**471**  
JUNE BUG



**601**  
RED/  
BLACK



**680**  
RUBY



**703**  
DARK ROYAL/  
WHITE



## TRACKSUIT

2028



**SR 104216.** S / M / L / XL / 2XL / 3XL

**JR 104216.** 4 (6XS) / 6 (5XS) / 8 (4XS) / 10 (3XS) / 12 (2XS) / 14 (XS)

Fleece  
100% Polyester

Tejido cálido interior, confortable y de alta durabilidad. Sudadera con cremallera y rib en puños y cintura. Pantalón largo con cintura ajustable y bajo con cremallera. Bolsillos con cremallera en ambas prendas.

*Warm inner fabric, comfortable and highly durable. Zipped sweatshirt with ribbed cuffs and waist. Full length trousers with adjustable waist and zipped hem. Zipped pockets on both garments.*



**151**  
ANTHRACITE/  
MEDIUM GREY/WHITE



**203**  
WHITE/  
DARK NAVY



**331**  
DARK NAVY/  
WHITE



**471**  
PONDEROSA PINE/  
BLACK/WHITE



**601**  
RED/  
BLACK/WHITE



**680**  
BURGUNDY/  
ANTHRACITE/WHITE



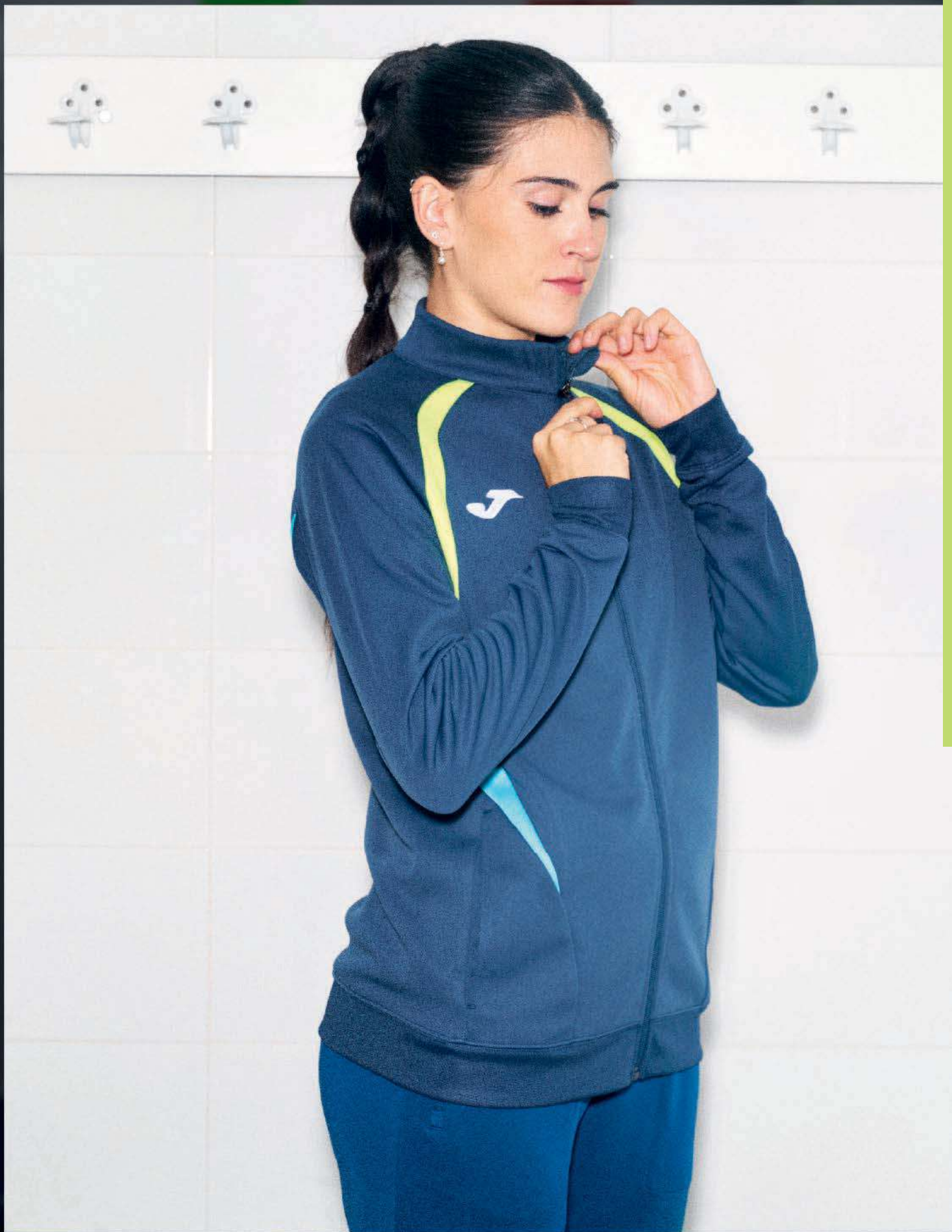
**703**  
ROYAL/DARK NAVY/  
WHITE

LOOKS POLYESTER



## CHAMPIONSHIP





LOOKS POLYESTER



# CHAMPIONSHIP 20<sup>o</sup>

## T-SHIRT

2029



SR 105164. S / M / L / XL / 2XL / 3XL / 4XL

JR 105164. 4 (6XS) / 6 (5XS) / 8 (4XS) / 10 (3XS) / 12 (2XS) / 14 (XS)

Polyester  
54% recycled  
polyester  
46% polyester

Tejido transpirable que integra fibras de poliéster reciclado. Acabado en jacquard para mayor transpirabilidad. Cuello redondo en tejido base. Mangas raglán.

*Breathable fabric integrating recycled polyester fibres. Jacquard finish for increased breathability. Crew neck made from base fabric. Raglan sleeves.*



**106**

BLACK/  
RED/WHITE

**111**

BLACK/  
NIMBUS CLOUD/  
WHITE

**203**

WHITE/  
DARK NAVY/  
RED

**283**

WHITE/  
DARK NAVY/  
TURQUOISE FLUOR

**311**

DARK NAVY/  
NIMBUS CLOUD/  
WHITE

**321**

DARK NAVY/  
YELLOW FLUOR/  
TURQUOISE FLUOR

**337**

DARK NAVY/  
ROYAL/RED

**383**

MEDIUM SKY/  
DARK NAVY/  
WHITE



**422**

CABBAGE/  
BLACK/WHITE

**456**

GREEN MEDIUM/  
RED/WHITE

**551**

VIOLET/BLACK/  
PURPLE ROSE

**601**

RED/  
BLACK/WHITE

**603**

RED/GOLD/  
DARK NAVY

**683**

RUBY/  
DARK NAVY/  
GOLD

**703**

ROYAL/  
DARK NAVY/  
WHITE

**907**

YELLOW/  
ROYAL/  
DARK NAVY



SR 903195.S / M / L / XL / 2XL

JR 903195.2XS / XS

Polyester  
54% recycled  
polyester  
46% polyester

Tejido transpirable que integra fibras de poliéster reciclado. Acabado en jacquard para mayor transpirabilidad. Cuello redondo en tejido base. Mangas raglán.

*Breathable fabric integrating recycled polyester fibres. Jacquard finish for increased breathability. Round neck line in base fabric. Raglan sleeves.*



**106**

BLACK/  
RED/WHITE

**111**

BLACK/  
NIMBUS CLOUD/  
WHITE

**203**

WHITE/  
DARK NAVY/  
RED

**283**

WHITE/  
DARK NAVY/  
TURQUOISE FLUOR

**311**

DARK NAVY/  
NIMBUS CLOUD/  
WHITE

**321**

DARK NAVY/  
YELLOW FLUOR/  
TURQUOISE FLUOR

**337**

DARK NAVY/  
ROYAL/RED

**383**

MEDIUM SKY/  
DARK NAVY/  
WHITE



**422**

CABBAGE/  
BLACK/WHITE

**456**

GREEN MEDIUM/  
RED/WHITE

**551**

VIOLET/BLACK/  
PURPLE ROSE

**601**

RED/  
BLACK/WHITE

**603**

RED/GOLD/  
DARK NAVY

**683**

RUBY/  
DARK NAVY/  
GOLD

**703**

ROYAL/  
DARK NAVY/  
WHITE

**907**

YELLOW/  
ROYAL/  
DARK NAVY





# CHAMPIONSHIP 20º



## SWEATSHIRT

2029



**SR 105166.** S / M / L / XL / 2XL / 3XL / 4XL

**JR 105166.** 4 (6XS) / 6 (5XS) / 8 (4XS) / 10 (3XS) / 12 (2XS) / 14 (XS)

100% Recycled polyester

Tejido cómodo 100% poliéster reciclado. Cierre con media cremallera. Puños y cintura en rib. Mangas raglán para mayor ajuste y libertad de movimiento.

Comfortable 100% recycled polyester fabric. Half zip closure. Ribbed cuffs and waistband Raglan sleeves for greater fit and freedom of movement.



**106**

BLACK/  
RED/WHITE



**111**

BLACK/  
NIMBUS CLOUD/  
WHITE



**321**

DARK NAVY/  
YELLOW FLUOR/  
TURQUOISE FLUOR



**311**

DARK NAVY/  
NIMBUS CLOUD/  
WHITE



**337**

DARK NAVY/  
ROYAL/RED



**383**

MEDIUM SKY/  
DARK NAVY/  
WHITE



**422**

CABBAGE/  
BLACK/WHITE



**456**

GREEN MEDIUM/  
RED/WHITE



**551**

VIOLET/BLACK/  
PURPLE ROSE



**601**

RED/  
BLACK/WHITE



**603**

RED/GOLD/  
DARK NAVY



**683**

RUBY/  
DARK NAVY/GOLD



**703**

ROYAL/  
DARK NAVY/WHITE



**907**

YELLOW/ROYAL/  
DARK NAVY

LOOKS POLYESTER



# CHAMPIONSHIP 20<sup>o</sup>

## JACKET

2029



**SR 105201.** S / M / L / XL / 2XL / 3XL / 4XL

**JR 105201.** 4 (6XS) / 6 (5XS) / 8 (4XS) / 10 (3XS) / 12 (2XS) / 14 (XS)

100% Recycled polyester

Tejido confortable 100% poliéster reciclado. Cierre con cremallera completa. Puños y cintura en rib. Mangas raglán. Bolsillos sin cremallera.

Comfortable 100% recycled polyester fabric. Full zip closure. Ribbed cuffs and waistband. Raglan sleeves. Pockets without a zip.



**106**  
BLACK/  
RED/WHITE



**111**  
BLACK/  
NIMBUS CLOUD/WHITE



**321**  
DARK NAVY/YELLOW FLUOR/  
TURQUOISE FLUOR



**311**  
DARK NAVY/  
NIMBUS CLOUD/WHITE



**337**  
DARK NAVY/  
ROYAL/RED



**383**  
MEDIUM SKY/  
DARK NAVY/WHITE



**422**  
CABBAGE/  
BLACK/WHITE



**456**  
GREEN MEDIUM/  
RED/WHITE



**551**  
VIOLET/BLACK/  
PURPLE ROSE



**601**  
RED/  
BLACK/WHITE



**603**  
RED/GOLD  
DARK NAVY



**683**  
RUBY/  
DARK NAVY/GOLD



**703**  
ROYAL/  
DARK NAVY/WHITE



**907**  
YELLOW/  
ROYAL/DARK NAVY

## LONG PANTS

2029



**SR 105202.** S / M / L / XL / 2XL / 3XL / 4XL

**JR 105202.** 4 (6XS) / 6 (5XS) / 8 (4XS) / 10 (3XS) / 12 (2XS) / 14 (XS)

Jacquard  
100% Recycled polyester

Tejido confortable 100% poliéster reciclado. Cintura elástica con cordón interior. Bolsillos con cremallera.

Comfortable fabric made from 100% recycled polyester. Elastic waistband with inner drawstring. Zip pockets.



**100**  
BLACK



**331**  
DARK NAVY





# CHAMPIONSHIP 20<sup>o</sup>

## JACKET

2029



SR 903196. S / M / L / XL / 2XL

JR 903196. 12 (2XS) / 14 (XS)

100% Recycled polyester

Tejido cómodo y cálido 100% poliéster reciclado. Cierre con cremallera completa. Puños y cintura en rib. Mangas raglán. Bolsillos sin cremallera.

Comfortable and warm fabric made from 100% recycled polyester. Full zip closure. Ribbed cuffs and waistband. Raglan sleeves. Pockets without zips.



**106**  
BLACK/  
RED/WHITE



**111**  
BLACK/  
NIMBUS CLOUD/WHITE



**321**  
DARK NAVY/YELLOW FLUOR/  
TURQOISE FLUOR



**311**  
DARK NAVY/  
NIMBUS CLOUD/WHITE



**337**  
DARK NAVY/  
ROYAL/RED



**383**  
MEDIUM SKY/  
DARK NAVY/WHITE



**422**  
CABBAGE/  
BLACK/WHITE



**456**  
GREEN MEDIUM/  
RED/WHITE



**551**  
VIOLET/BLACK/  
PURPLE ROSE



**601**  
RED/  
BLACK/WHITE



**603**  
RED/GOLD  
DARK NAVY



**683**  
RUBY/  
DARK NAVY/GOLD



**703**  
ROYAL/  
DARK NAVY/WHITE



**907**  
YELLOW/  
ROYAL/DARK NAVY

## LONG PANTS

2029



SR 903308.S / M / L / XL / 2XL

JR 903308.12 (2XS) / 14 (XS)

Jacquard  
100% Recycled polyester

Tejido cómodo y de alta durabilidad 100% poliéster reciclado. Cintura elástica con bolsillo interior. Bolsillos con cremallera.

Comfortable and highly durable fabric made from 100% recycled polyester. Elastic waistband with interior pocket. Zippered pockets.



**100**  
BLACK



**331**  
DARK NAVY



LOOKS POLYESTER



# CHAMPIONSHIP VIII



## T-SHIRT

2028



SR 104263. S / M / L / XL / 2XL / 3XL / 4XL

JR 104263. 4 (6XS) / 6 (5XS) / 8 (4XS) / 10 (3XS) / 12 (2XS) / 14 (XS)

100% Poliéster Interlock  
100% Polyester Interlock

Tejido cómodo y de alta durabilidad. Cuello redondo con covertape elástico interior para mayor ajuste. Sublimación en mangas.

Comfortable and highly durable fabric. Round neck with elastic covertape inside for a better fit. Sublimation on sleeves.



**010**  
TURQUOISE FLUOR/  
SKY



**020**  
GREEN FLUOR



**671**  
RUBY



**682**  
RUBY/  
SKY



**109**  
BLACK/  
YELLOW



**110**  
BLACK/  
ANTHRACITE



**200**  
WHITE



**206**  
WHITE/  
RED



**207**  
WHITE/  
ROYAL



**331**  
DARK NAVY



**336**  
DARK NAVY/  
RED



**339**  
DARK NAVY/  
YELLOW



**450**  
GREEN MEDIUM



**456**  
GREEN MEDIUM/  
RED



**474**  
KAKI/  
YELLOW FLUOR



**550**  
VIOLET



**600**  
RED



**609**  
RED/  
YELLOW



**880**  
ORANGE



**700**  
ROYAL



**709**  
ROYAL/  
YELLOW



**900**  
YELLOW



**904**  
YELLOW/  
GREEN MEDIUM



**907**  
YELLOW/  
ROYAL



# CHAMPIONSHIP VIII



## T-SHIRT

2028



SR 902514. S / M / L / XL / 2XL

JR 902514. 12 (2XS) / 14 (XS)

100% Poliéster  
Interlock

100% Polyester  
Interlock

Tejido cómodo y de alta durabilidad. Cuello redondo con covertape elástico interior para mayor ajuste. Sublimación en mangas.

Comfortable and highly durable fabric. Round neck with elastic covertape inside for a better fit. Sublimation on sleeves.



**010**

TURQUOISE FLUOR/  
SKY



**020**

GREEN FLUOR



**671**

RUBY



**682**

RUBY/  
SKY



**109**

BLACK/  
YELLOW



**110**

BLACK/  
ANTHRACITE



**200**

WHITE



**206**

WHITE/  
RED



**207**

WHITE/  
ROYAL



**331**

DARK NAVY



**336**

DARK NAVY/  
RED



**339**

DARK NAVY/  
YELLOW



**450**

GREEN MEDIUM



**456**

GREEN MEDIUM/  
RED



**474**

KAKI/  
YELLOW FLUOR



**550**

VIOLET



**600**

RED



**609**

RED/  
YELLOW



**880**

ORANGE



**700**

ROYAL



**709**

ROYAL/  
YELLOW



**900**

YELLOW



**904**

YELLOW/  
GREEN MEDIUM



**907**

YELLOW/  
ROYAL

LOOKS POLYESTER



# CHAMPIONSHIP VIII



## SLEEVELESS

2028



SR 902562. S / M / L / XL

JR 902562. 8 (4XS) / 10 (3XS) / 12 (2XS) / 14 (XS)

Interlock  
100% Polyester

Tejido cómodo y de alta durabilidad. Cuello a pico con covertape elástico interior para mayor ajuste. Sublimación en hombros.

Comfortable and highly durable fabric. V-neck with inner elastic covertape for a better fit. Sublimation on shoulders.



**010**  
TURQUOISE FLUOR/  
SKY



**020**  
GREEN FLUOR



**671**  
RUBY



**682**  
RUBY/  
SKY



**109**  
BLACK/  
YELLOW



**110**  
BLACK/  
ANTHRACITE



**200**  
WHITE



**206**  
WHITE/  
RED



**207**  
WHITE/  
ROYAL



**331**  
DARK NAVY



**336**  
DARK NAVY/  
RED



**339**  
DARK NAVY/  
YELLOW



**450**  
GREEN MEDIUM



**456**  
GREEN MEDIUM/  
RED



**474**  
KAKI/  
YELLOW FLUOR



**550**  
VIOLET



**600**  
RED



**609**  
RED/  
YELLOW



**880**  
ORANGE



**700**  
ROYAL



**709**  
ROYAL/  
YELLOW



**900**  
YELLOW



**904**  
YELLOW/  
GREEN MEDIUM



**907**  
YELLOW/  
ROYAL



# CHAMPIONSHIP VIII



## 1/2 SWEATSHIRT

2028



SR 104217. S / M / L / XL / 2XL / 3XL / 4XL

JR 104217. 4 (6XS) / 6 (5XS) / 8 (4XS) / 10 (3XS) / 12 (2XS) / 14 (XS)

Fleece  
100% Polyester

Tejido cálido interior, confortable y de alta durabilidad. Cuello alto y cremallera hasta el pecho con protección en barbilla. Sublimación en hombros y mangas.

Warm, comfortable and highly durable inner fabric. High collar and zip up to the chest with chin protection. Sublimation on shoulders and sleeves.



**010**  
TURQUOISE FLUOR/  
SKY



**109**  
BLACK/  
YELLOW



**110**  
BLACK/  
ANTHRACITE



**331**  
DARK NAVY



**336**  
DARK NAVY/  
RED



**339**  
DARK NAVY/  
YELLOW



**020**  
GREEN FLUOR



**450**  
GREEN MEDIUM



**474**  
KAKI/  
YELLOW FLUOR



**550**  
VIOLET



**600**  
RED



**609**  
RED/  
YELLOW



**671**  
RUBY



**700**  
ROYAL



**709**  
ROYAL/  
YELLOW



**880**  
ORANGE



**900**  
YELLOW



**907**  
YELLOW/  
ROYAL

LOOKS POLYESTER



# CHAMPIONSHIP VIII

## TRACKSUIT

2028



SR 104201. S / M / L / XL / 2XL / 3XL / 4XL

JR 104201. 4 (6XS) / 6 (5XS) / 8 (4XS) / 10 (3XS) / 12 (2XS) / 14 (XS)

Interlock  
100% Polyester

Tejido cómodo y de alta durabilidad. Sudadera con cremallera y rib en puños y cintura. Pantalón largo con cintura ajustable. Bolsillos con cremallera en ambas prendas.

Comfortable and highly durable fabric. Zip-up sweatshirt with ribbed cuffs and waist. Long pants with adjustable waist. Zippered pockets on both garments.



**013**  
TURQUOISE FLUOR/  
DARK NAVY



**021**  
GREEN FLUOR/  
BLACK



**109**  
BLACK/  
YELLOW



**110**  
BLACK/  
ANTHRACITE



**331**  
DARK NAVY



**336**  
DARK NAVY/  
RED



**339**  
DARK NAVY/  
YELLOW



**201**  
WHITE/  
BLACK



**451**  
GREEN/WHITE/  
BLACK



**474**  
KAKI/BLACK/  
YELLOW FLUOR



**551**  
VIOLET/  
BLACK



**601**  
RED/  
BLACK



**603**  
RED/  
DARK NAVY



**673**  
BURGUNDY/  
DARK NAVY



**703**  
ROYAL/  
DARK NAVY



**709**  
ROYAL/DARK NAVY/  
YELLOW



**881**  
ORANGE/  
BLACK



**901**  
YELLOW/  
BLACK





# CHAMPIONSHIP VIII



## TRACKSUIT

2028



SR 902516. S / M / L / XL / 2XL  
JR 902516. 12 (2XS) / 14 (XS)

Interlock  
100% Polyester

Tejido cómodo y de alta durabilidad. Sudadera con cremallera y rib en puños y cintura. Pantalón largo con cintura ajustable. Bolsillos con cremallera en ambas prendas.  
*Comfortable and highly durable fabric. Zip-up sweatshirt with ribbed cuffs and waist. Long pants with adjustable waist. Zippered pockets on both garments.*



**013**  
TURQUOISE FLUOR/  
DARK NAVY



**021**  
GREEN FLUOR/  
BLACK



**109**  
BLACK/  
YELLOW



**110**  
BLACK/  
ANTHRACITE



**331**  
DARK NAVY



**336**  
DARK NAVY/  
RED



**339**  
DARK NAVY/  
YELLOW



**201**  
WHITE/  
BLACK



**451**  
GREEN/WHITE/  
BLACK



**474**  
KAKI/BLACK/  
YELLOW FLUOR



**551**  
VIOLET/  
BLACK



**601**  
RED/  
BLACK



**603**  
RED/  
DARK NAVY



**673**  
BURGUNDY/  
DARK NAVY



**703**  
ROYAL/  
DARK NAVY



**709**  
ROYAL/DARK NAVY/  
YELLOW



**881**  
ORANGE/  
BLACK



**901**  
YELLOW/  
BLACK

LOOKS POLYESTER



# CHAMPIONSHIP VIII



**5000MM  
WATERPROOF**

## RAINJACKET

2028



**SR 104374.** S / M / L / XL / 2XL / 3XL / 4XL

**JR 104374.** 4 (6XS) / 6 (5XS) / 8 (4XS) / 10 (3XS) / 12 (2XS) / 14 (XS)

100% Polyester  
Lining  
100% Polyester Mesh

Tejido waterproof 5.000 mm, resistente a lluvia moderada, con mesh interior. Capucha ajustable. Ajuste en bajo y puños. Sistema de ventilación en la espalda. Bolsillos con cremallera.  
*Waterproof fabric 5,000 mm, resistant to moderate rain, with mesh interior. Adjustable hood. Adjustable hem and cuffs. Ventilation system on the back. Zippered pockets.*



**010**

TURQUOISE FLUOR/  
SKY



**020**

GREEN FLUOR



**109**

BLACK/  
YELLOW



**110**

BLACK/  
ANTHRACITE



**200**

WHITE



**331**

DARK NAVY



**336**

DARK NAVY/  
RED



**339**

DARK NAVY/  
YELLOW



**450**

GREEN MEDIUM



**550**

VIOLET



**600**

RED



**671**

RUBY



**700**

ROYAL



**709**

ROYAL/  
YELLOW



**880**

ORANGE



**900**

YELLOW



# CHAMPIONSHIP VIII



LOOKS POLYESTER



## LONG PANTS

2028



**SR 104281.** S / M / L / XL / 2XL / 3XL / 4XL

**JR 104281.** 4 (6XS) / 6 (5XS) / 8 (4XS) / 10 (3XS) / 12 (2XS) / 14 (XS)

Fleece  
100% Polyester

Tejido cálido interior, cómodo y de alta durabilidad. Cintura elástica ajustable. Bolsillos con cremallera. Detalles sublimados.

Warm inner fabric, comfortable and highly durable. Adjustable elastic waist. Zippered pockets. Sublimated details.



**102**  
BLACK/WHITE



**106**  
BLACK/RED



**109**  
BLACK/YELLOW



**332**  
DARK NAVY/WHITE



**336**  
DARK NAVY/RED



**337**  
DARK NAVY/  
ROYAL



**339**  
DARK NAVY/YELLOW



**342**  
DARK NAVY/  
TURQUOISE FLUOR



## WINNER IV





# WINNER IV

## MICRO-MESH SYSTEM



### T-SHIRT

2028



SR 105002. S / M / L / XL / 2XL / 3XL / 4XL

JR 105002. 4 (6XS) / 6 (5XS) / 8 (4XS) / 10 (3XS) / 12 (2XS) / 14 (XS)

Interlock  
100% Polyester

Tejido cómodo y de alta durabilidad. Paneles con tecnología Micro-Mesh System en zonas de mayor sudoración. Cuello redondo en tejido base.

*Comfortable and highly durable fabric. Panels with Micro-Mesh System technology in areas of higher perspiration areas. Base fabric round neck.*



**013**

TURQUOISE FLUOR/  
DARK NAVY



**701**

ROYAL/  
BLACK



**702**

ROYAL/  
WHITE



**709**

ROYAL/  
YELLOW



**102**

BLACK/  
WHITE



**106**

BLACK/  
RED



**109**

BLACK/  
YELLOW



**110**

BLACK/  
ANTHRACITE



**601**

RED/  
BLACK



**602**

RED/  
WHITE



**603**

RED/  
DARK NAVY



**201**

WHITE/  
BLACK



**206**

WHITE/  
RED



**207**

WHITE/  
ROYAL



**253**

GREY/  
DARK NAVY



**501**

RASBERRY/  
BLACK



**336**

DARK NAVY/  
RED



**341**

DARK NAVY/  
GREY



**352**

SKY/  
WHITE



**021**

GREEN FLUOR/  
BLACK



**461**

GREEN MEDIUM/  
GREY



**552**

VIOLET/  
WHITE



**681**

RUBY/  
GREY



**901**

YELLOW/  
BLACK



**907**

YELLOW/  
ROYAL

LOOKS POLYESTER



# WINNER IV



## 1/2 SWEATSHIRT

2028



SR 105003. S / M / L / XL / 2XL / 3XL / 4XL

JB 105003. 4 (6XS) / 6 (5XS) / 8 (4XS) / 10 (3XS) / 12 (2XS) / 14 (XS)

Fleece  
100% Polyester

Tejido cálido y confortable. Cierre con media cremallera. Puños y cintura en rib.  
*Warm and comfortable fabric. Half zip closure. Ribbed cuffs and waistband.*



**013**

TURQUOISE FLUOR/  
DARK NAVY



**021**

GREEN FLUOR/  
DARK NAVY



**102**

BLACK/  
WHITE



**105**

BLACK/  
RASPBERRY



**106**

BLACK/  
RED



**109**

BLACK/  
YELLOW



**110**

BLACK/  
ANTHRACITE



**253**

GREY/  
DARK NAVY



**312**

DARK NAVY/  
SKY



**337**

DARK NAVY/  
ROYAL



**341**

DARK NAVY/  
GREY



**461**

GREEN MEDIUM/  
GREY



**552**

VIOLET/  
WHITE



**602**

RED/  
WHITE



**603**

RED/  
DARK NAVY



**681**

RUBY/  
GREY



**701**

ROYAL/  
BLACK



**702**

ROYAL/  
WHITE



**709**

ROYAL/  
YELLOW



# WINNER IV

## TRACKSUIT 2028

 **SR 105001.S** / M / L / XL / 2XL / 3XL / 4XL  
**JR 105001.4** (6XS) / 6 (5XS) / 8 (4XS) / 10 (3XS) / 12 (2XS) / 14 (XS)

Fleece  
100% Polyester

Tejido cálido interior. Sudadera con cremallera y rib en puños y cintura. Pantalón largo con cintura elástica y cordón interior. Bolsillos con cremallera en ambas prendas.

Warm inner fabric. Sweatshirt with zipper and ribbed cuffs and waist. Long pants with elastic waistband and internal drawstring. Zip pockets on both garments.



**013** TURQUOISE FLUOR/  
DARK NAVY

**105** BLACK/  
RASPBERRY

**106** BLACK/  
RED

**109** BLACK/  
YELLOW

**117** BLACK/  
GREEN MEDIUM



**151** BLACK/  
ANTHRACITE

**253** GREY/  
DARK NAVY

**312** DARK NAVY/  
SKY

**461** GREEN MEDIUM/  
GREY/BLACK

**552** VIOLET/WHITE/  
BLACK



**603** RED/  
DARK NAVY

**681** RUBY/GREY/  
BLACK

**701** ROYAL/  
BLACK

**702** ROYAL/  
WHITE

**907** YELLOW/ROYAL/  
DARK NAVY

LOOKS POLYESTER



# LIDER



SET

2027



SR 104285.S / M / L / XL / 2XL / 3XL

SR 104285.4 (6XS) / 6 (5XS) / 8 (4XS) / 10 (3XS) / 12 (2XS) / 14 (XS)

Interlock  
100% Polyester

Tejido cómodo y de alta durabilidad. Tecnología Micro-Mesh System en zonas de mayor sudoración en ambas prendas. Short con cintura elástica ajustable.

Comfortable and highly durable fabric. Micro-Mesh System technology in areas of higher perspiration in both garments. Shorts with adjustable elastic waistband.



013

TURQUOISE FLUOR/  
DARK NAVY



063

YELLOW FLUOR/  
DARK NAVY



102

BLACK/  
WHITE



203

WHITE/  
DARK NAVY



206

WHITE/  
RED



207

WHITE/  
ROYAL



332

DARK NAVY/  
WHITE



601

RED/  
BLACK



603

RED/  
DARK NAVY



451

GREEN MEDIUM/  
BLACK



703

ROYAL/  
DARK NAVY



881

ORANGE/  
BLACK



901

YELLOW/  
BLACK



907

YELLOW/  
ROYAL





# LIDER



SET

2027



SR 902560. S / M / L / XL

Interlock  
100% Polyester

Tejido cómodo y de alta durabilidad. Tecnología Micro-Mesh System en zonas de mayor sudoración en ambas prendas. Short con cintura elástica ajustable.

*Comfortable and highly durable fabric. Micro-Mesh System technology in areas of higher perspiration in both garments. Shorts with adjustable elastic waistband.*



LOOKS POLYESTER



**013**

TURQUOISE FLUOR/  
DARK NAVY



**063**

YELLOW FLUOR/  
DARK NAVY



**102**

BLACK/  
WHITE



**203**

WHITE/  
DARK NAVY



**206**

WHITE/  
RED



**207**

WHITE/  
ROYAL



**332**

DARK NAVY/  
WHITE



**451**

GREEN MEDIUM/  
BLACK



**601**

RED/  
BLACK



**603**

RED/  
DARK NAVY



**703**

ROYAL/  
DARK NAVY



**881**

ORANGE/  
BLACK



**901**

YELLOW/  
BLACK



**907**

YELLOW/  
ROYAL



# LIDER



T-SHIRT

2027



SR 104489.S / M / L / XL / 2XL / 3XL / 4XL / 5XL

JR 104489.4 (6XS) / 6 (5XS) / 8 (4XS) / 10 (3XS) / 12 (2XS) / 14 (XS)

Jacquard  
92% Recycled polyester  
8% Spandex

Tejido cómodo y de alta durabilidad. Cuello redondo con covertape elástico interior para mayor ajuste. Sublimación en mangas.

*Breathable fabric 100% recycled polyester. Micro-Mesh System technology in areas of higher perspiration. Ribbed button-down collar.*



013

TURQUOISE FLUOR/  
DARK NAVY



063

YELLOW FLUOR/  
DARK NAVY



102

BLACK/  
WHITE



451

GREEN MEDIUM/  
BLACK



203

WHITE/  
DARK NAVY



206

WHITE/  
RED



207

WHITE/  
ROYAL



332

DARK NAVY/  
WHITE



601

RED/  
BLACK



603

RED/  
DARK NAVY



703

ROYAL/  
DARK NAVY



881

ORANGE/  
BLACK



901

YELLOW/  
BLACK



907

YELLOW/  
ROYAL

# LIDER



T-SHIRT

2027



SR 902643.S / M / L / XL / 2XL

JR 902643.12 (2XS) / 14 (XS)

Jacquard  
92% Recycled polyester  
8% Spandex

Tejido cómodo y de alta durabilidad. Cuello redondo con covertape elástico interior para mayor ajuste. Sublimación en mangas.

*Breathable fabric 100% recycled polyester. Micro-Mesh System technology in areas of higher perspiration. Ribbed button-down collar.*



013

TURQUOISE FLUOR/  
DARK NAVY



063

YELLOW FLUOR/  
DARK NAVY



102

BLACK/  
WHITE



451

GREEN MEDIUM/  
BLACK



203

WHITE/  
DARK NAVY



206

WHITE/  
RED



207

WHITE/  
ROYAL



332

DARK NAVY/  
WHITE



601

RED/  
BLACK



603

RED/  
DARK NAVY



703

ROYAL/  
DARK NAVY



881

ORANGE/  
BLACK



901

YELLOW/  
BLACK




907

YELLOW/  
ROYAL



# LIDER

## HOODIE JACKET 2027

 **SR 104300.** S / M / L / XL / 2XL / 3XL / 4XL / 5XL  
**JR 104300.** 4 (6XS) / 6 (5XS) / 8 (4XS) / 10 (3XS) / 12 (2XS) / 14 (XS)

Fleece  
 100% Polyester

Tejido cálido interior, cómodo y de alta durabilidad. Cierre con cremallera, capucha regulable con cordón y rib en puños y cintura. Bolsillos con cremallera.

*Warm inner fabric, comfortable and highly durable. Zip closure, adjustable hood with drawstring, and ribbed cuffs and waist. Zippered pockets.*



**013**  
 TURQUOISE FLUOR/  
 DARK NAVY



**063**  
 YELLOW FLUOR/  
 DARK NAVY



**203**  
 WHITE/  
 DARK NAVY



**151**  
 BLACK/  
 ANTHRACITE

**451**  
 GREEN MEDIUM/  
 BLACK

**601**  
 RED/  
 BLACK

**603**  
 RED/  
 DARK NAVY



**703**  
 DARK ROYAL/  
 DARK NAVY

**881**  
 ORANGE/  
 BLACK

**901**  
 YELLOW/  
 BLACK

**907**  
 YELLOW/  
 ROYAL



LOOKS POLYESTER



# LIDER



## TRACKSUIT

2027



SR 104286. S / M / L / XL / 2XL / 3XL / 4XL / 5XL

JR 104286. 6XS / 5XS / 4XS / 3XS / 2XS / XS

Fleece  
100% Polyester

Tejido cálido interior, cómodo y de alta durabilidad. Sudadera con cremallera y rib en puños y cintura. Pantalón largo con cintura ajustable. Bolsillos con cremallera en ambas prendas.

Warm, comfortable and highly durable inner fabric. Zip-up sweatshirt with ribbed cuffs and waist. Long trousers with adjustable waist. Zippered pockets on both garments.



**013**  
TURQUOISE FLUOR/  
DARK NAVY



**063**  
YELLOW FLUOR/  
DARK NAVY



**601**  
RED/  
BLACK



**603**  
RED/  
DARK NAVY



**151**  
BLACK/  
ANTHRACITE



**451**  
GREEN MEDIUM/  
BLACK



**203**  
WHITE/  
DARK NAVY



**703**  
DARK ROYAL/  
DARK NAVY



**881**  
ORANGE/  
BLACK



**901**  
YELLOW/  
BLACK



**907**  
YELLOW/ROYAL/  
DARK NAVY



SR 103124. S / M / L / XL / 2XL / 3XL

JR 103124. 2 (8XS) / 3 (7XS) / 4 (6XS) / 6 (5XS) / 8 (4XS) / 10 (3XS) / 12 (2XS) / 14 (XS)

100% Poliéster Interlock  
100% Polyester Interlock

Conjunto de dos piezas compuesto por camiseta de manga corta con una línea de contraste a color en la parte superior del pecho y pantalón corto con cintura elástica ajustable mediante cordón. Logo J serigrafiado.

Two-piece set consisting of short sleeve t-shirt with a contrasting coloured line on the upper chest and shorts with elasticated waist that can be adjusted with a draw cord. Printed J logo.



**709**  
ROYAL/  
YELLOW



**019**  
TURQUOISE FLUOR/  
YELLOW FLUOR



**021**  
FLUOR GREEN/  
BLACK



**061**  
FLUOR YELLOW/  
BLACK



**102**  
BLACK/  
WHITE



**106**  
BLACK/  
RED



**151**  
ANTHRACITE/  
BLACK



**206**  
WHITE/  
RED



**207**  
WHITE/  
ROYAL



**336**  
DARK NAVY/  
RED



**339**  
DARK NAVY/  
YELLOW



**383**  
MEDIUM SKY/  
DARK NAVY



**451**  
GREEN MEDIUM/  
BLACK



**551**  
VIOLET/  
BLACK



**601**  
RED/  
BLACK



**609**  
RED/YELLOW/  
BLACK



**703**  
ROYAL/  
DARK NAVY



**881**  
ORANGE/  
BLACK



**907**  
YELLOW/  
ROYAL



# PHOENIX II



## SWEATSHIRT

2028



SR 105195. S / M / L / XL / 2XL / 3XL

JR 105195. 2 (8XS) / 3 (7XS) / 4 (6XS) / 6 (5XS) / 8 (4XS) / 10 (3XS) / 12 (2XS) / 14 (XS)

Fleece  
100% Polyester

Tejido cálido interior, cómodo y de alta durabilidad. Cuello, puños y cintura en rib.  
Warm inner fabric, comfortable and highly durable. Ribbed collar, cuffs, and waistband.



019

TURQOISE FLUOR/  
YELLOW



021

GREEN FLUOR/  
BLACK



102

BLACK/  
WHITE



336

DARK NAVY/  
RED



339

DARK NAVY/YELLOW



383

MEDIUM SKY/  
DARK NAVY



451

GREEN MEDIUM/  
BLACK



551

VIOLET/  
BLACK



601

RED/  
BLACK



609

RED/  
YELLOW



703

ROYAL/  
DARK NAVY



881

ORANGE/  
BLACK



# PHOENIX II



## TRACKSUIT

2028



**SR 105113.** S / M / L / XL / 2XL / 3XL

**JR 105113.** 2 (8XS) / 3 (7XS) / 4 (6XS) / 6 (5XS) / 8 (4XS) / 10 (3XS) / 12 (2XS) / 14 (XS)

Interlock  
100% Polyester

Tejido cómodo y de alta durabilidad. Sudadera con cremallera, rib en puños y cintura, y bolsillos sin cremallera. Pantalón largo con cintura elástica y cordón interior, y bolsillos con cremallera.

*Comfortable and highly durable fabric. Sweatshirt with zipper, ribbed cuffs and waistband, and non-zipped pockets. Full length pants with elastic waistband and inner drawstring, and zip pockets.*



**019**

TURQUOISE FLUOR/  
YELLOW



**021**

GREEN FLUOR/  
BLACK



**102**

BLACK/  
WHITE



**336**

DARK NAVY/  
RED



**339**

DARK NAVY/YELLOW



**383**

MEDIUM SKY/  
DARK NAVY



**451**

GREEN MEDIUM/  
BLACK



**551**

VIOLET/  
BLACK



**601**

RED/  
BLACK



**609**

RED/  
YELLOW



**703**

ROYAL/  
DARK NAVY



**709**

ROYAL/  
YELLOW



**881**

ORANGE/  
BLACK

LOOKS POLYESTER



# COMBI PREMIUM



## T-SHIRT

N.O.S



SR 104494. S / M / L / XL / 2XL / 3XL / 4XL / 5XL

JR 104494. 4 (6XS) / 6 (5XS) / 8 (4XS) / 10 (3XS) / 12 (2XS) / 14 (XS)

Interlock  
100% Polyester

Tejido confortable y de alta durabilidad. Cuello redondo con covertape interior para evitar rozaduras.

Comfortable and highly durable fabric. Round neck with inner covertape to prevent chafing.



**013**

TURQOISE FLUOR/  
DARK NAVY



**031**

PINK FLUOR/  
BLACK



**102**

BLACK/  
WHITE



**109**

BLACK/  
YELLOW



**151**

ANTHRACITE/  
BLACK



**203**

WHITE/  
DARK NAVY



**280**

MEDIUM MELANGE/  
BLACK



**332**

DARK NAVY/  
WHITE



**336**

DARK NAVY/  
RED



**452**

GREEN MEDIUM/  
WHITE



**672**

RUBY/  
WHITE



**601**

RED/  
BLACK



**603**

RED/  
DARK NAVY



**703**

ROYAL/  
DARK NAVY



**709**

ROYAL/  
YELLOW



**881**

ORANGE/  
BLACK

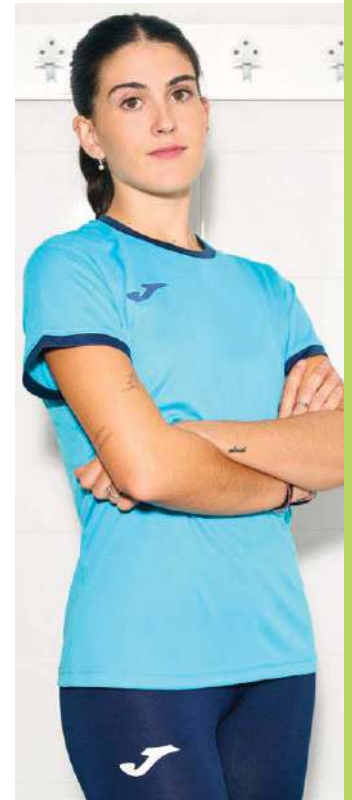


**901**

YELLOW/  
BLACK



# COMBI PREMIUM



## T-SHIRT

N.O.S



SR 902655. S / M / L / XL / 2XL

JR 902655. 12 (2XS) / 14 (XS)

Interlock  
100% Polyester

Tejido confortable y de alta durabilidad. Cuello redondo con covertape interior para evitar rozaduras.

Comfortable and highly durable fabric. Round neck with inner covertape to prevent chafing.



**013**

TURQUOISE FLUOR/  
DARK NAVY



**031**

PINK FLUOR/  
BLACK



**102**

BLACK/  
WHITE



**109**

BLACK/  
YELLOW



**151**

ANTHRACITE/  
BLACK



**203**

WHITE/  
DARK NAVY



**280**

MEDIUM MELANGE/  
BLACK



**332**

DARK NAVY/  
WHITE



**336**

DARK NAVY/  
RED



**452**

GREEN MEDIUM/  
WHITE



**672**

RUBY/  
WHITE



**601**

RED/  
BLACK



**603**

RED/  
DARK NAVY



**703**

ROYAL/  
DARK NAVY



**709**

ROYAL/  
YELLOW



**881**

ORANGE/  
BLACK



**901**

YELLOW/  
BLACK

LOOKS POLYESTER



# COMBI PREMIUM



 POLO

N.O.S



SR 104493. S / M / L / XL / 2XL / 3XL / 4XL / 5XL

JR 104493. 4 (6XS) / 6 (5XS) / 8 (4XS) / 10 (3XS) / 12 (2XS) / 14 (XS)

94% Poliéster  
6% Algodón  
94% Polyester  
6% Cotton

Tejido suave, confortable y de alta durabilidad. Cuello en rib abotonado. Cómodo ajuste en rib en puños.  
Soft, comfortable and highly durable fabric. Buttoned ribbed collar. Comfortable ribbed fit on cuffs.



**013**

TURQUOISE FLUOR/  
DARK NAVY



**102**

BLACK/  
WHITE



**109**

BLACK/  
YELLOW



**118**

BLACK/  
PINK FLUOR



**151**

BLACK/  
ANTHRACITE



**203**

WHITE/  
DARK NAVY



**280**

LIGHT MELANGE/  
BLACK



**332**

DARK NAVY/  
WHITE



**336**

DARK NAVY/  
RED



**601**

RED/  
BLACK



**603**

RED/  
DARK NAVY



**452**

GREEN MEDIUM/  
WHITE



**672**

BURGUNDY/  
WHITE



**703**

ROYAL/  
DARK NAVY



**709**

ROYAL/  
YELLOW



**881**

ORANGE/  
BLACK



**901**

YELLOW/  
BLACK



# COMBI PREMIUM



LOOKS POLYESTER

## SWEATSHIRT

N.O.S



SR 104369. S / M / L / XL / 2XL / 3XL / 4XL / 5XL

JR 104369. 4 (6XS) / 6 (5XS) / 8 (4XS) / 10 (3XS) / 12 (2XS) / 14 (XS)

Fleece  
100% Polyester

Tejido cálido interior, confortable y de alta durabilidad. Cremallera hasta el pecho. Manga raglán para mejor ajuste y movilidad. Rib en puños y cintura.

Warm inner fabric, comfortable and highly durable. Chest zipper. Raglan sleeve for better fit and mobility. Ribbed cuffs and waist.



**013**

TURQUOISE FLUOR/  
DARK NAVY



**102**

BLACK/  
WHITE



**109**

BLACK/  
YELLOW



**151**

ANTHRACITE/  
BLACK



**203**

WHITE/  
DARK NAVY



**280**

LIGHT MELANGE/  
BLACK



**332**

DARK NAVY/  
WHITE



**336**

DARK NAVY/  
RED



**601**

RED/  
BLACK



**603**

RED/  
DARK NAVY



**452**

GREEN MEDIUM/  
WHITE



**672**

BURGUNDY/  
WHITE



**703**

ROYAL/  
DARK NAVY



**709**

ROYAL/  
YELLOW



**881**

ORANGE/  
BLACK



**901**

YELLOW/  
BLACK



# COMBI PREMIUM



## JACKET

N.O.S



SR 104212. S / M / L / XL / 2XL / 3XL / 4XL / 5XL

JR 104212. 4 (6XS) / 6 (5XS) / 8 (4XS) / 10 (3XS) / 12 (2XS) / 14 (XS)

H600 Interlock  
100% Polyester

Tejido cómodo y de alta durabilidad. Cierre con cremallera y bolsillos. Manga raglán para mejor ajuste y movilidad. Rib en puños y cintura.

Comfortable and highly durable fabric. Zip closure and pockets. Raglan sleeve for better fit and mobility. Ribbed cuffs and waist.



013

TURQUOISE FLUOR/  
DARK NAVY



102

BLACK/  
WHITE



109

BLACK/  
YELLOW



118

BLACK/  
PINK FLUOR



151

ANTHRACITE/  
BLACK



203

WHITE/  
DARK NAVY



280

LIGHT MELANGE/  
BLACK



332

DARK NAVY/  
WHITE



336

DARK NAVY/  
RED



601

RED/  
BLACK



603

RED/  
DARK NAVY



452

GREEN MEDIUM/  
WHITE



672

BURGUNDY/  
WHITE



703

ROYAL/  
DARK NAVY



709

ROYAL/  
YELLOW



881

ORANGE/  
BLACK



901

YELLOW/  
BLACK

# COMBI PREMIUM



## LONG PANTS

N.O.S



SR 104496. S / M / L / XL / 2XL / 3XL / 4XL / 5XL

JR 104496. 4 (6XS) / 6 (5XS) / 8 (4XS) / 10 (3XS) / 12 (2XS) / 14 (XS)

H600 Interlock  
100% Polyester

Tejido cómodo y de alta durabilidad. Cinturilla elástica ajustable. Bolsillos laterales con cremallera.

Comfortable and highly durable fabric. Adjustable elastic waistband. Side pockets with zipper.



100  
BLACK



331  
DARK NAVY



# COMBI PREMIUM



## SWEATSHIRT

N.O.S



SR 104495. S / M / L / XL / 2XL / 3XL / 4XL / 5XL

JR 104495. 4 (6XS) / 6 (5XS) / 8 (4XS) / 10 (3XS) / 12 (2XS) / 14 (XS)

Fleece  
100% Polyester

Tejido cálido interior, cómodo y extra suave. Capucha ajustable. Ajuste en rib en puños y cintura. Manga raglán. Bolsillo kanguro.

Warm inner fabric, comfortable and extra soft. Adjustable hood. Ribbed cuffs and waist for a perfect fit. Raglan sleeve. Kangaroo pocket.



**013**

TURQUOISE FLUOR/  
DARK NAVY



**102**

BLACK/  
WHITE



**109**

BLACK/  
YELLOW



**151**

BLACK/  
ANTHRACITE



**203**

WHITE/  
DARK NAVY



**280**

LIGHT MELANGE/  
BLACK



**332**

DARK NAVY/  
WHITE



**336**

DARK NAVY/  
RED



**601**

RED/  
BLACK



**603**

RED/  
DARK NAVY



**452**

GREEN MEDIUM/  
WHITE



**672**

BURGUNDY/  
WHITE



**703**

ROYAL/DARK NAVY



**709**

ROYAL/  
YELLOW



**881**

ORANGE/  
BLACK



**901**

YELLOW/  
BLACK

LOOKS POLYESTER



# DANUBIO IV

## T-SHIRT

2027



SR 104209. S / M / L / XL / 2XL / 3XL

JR 104209. 4 (6XS) / 6 (5XS) / 8 (4XS) / 10 (3XS) / 12 (2XS) / 14 (XS)

Interlock  
100% Polyester

Tejido cómodo y de alta durabilidad. Cuello redondo con covertape elástico interior para mayor ajuste. Aberturas laterales.  
*Comfortable and highly durable fabric. Round neck with inner elastic covertape for a better fit. Side openings.*



011

TURQUOISE FLUOR/  
WHITE/BLACK



022

FLUOR GREEN/  
WHITE/DARK NAVY



061

YELLOW FLUOR/  
BLACK/ANTHRACITE



653

BOYSENBERRY/WHITE/  
DARK NAVY



102

BLACK/WHITE/  
ANTHRACITE



121

BLACK/YELLOW FLUOR/  
ANTHRACITE



206

WHITE/RED/  
DARK NAVY



207

WHITE/ROYAL/  
BLACK



332

DARK NAVY/  
WHITE/RED



410

VIVID GREEN/BLACK/  
ANTHRACITE



433

SURF SPRAY/  
BLACK/ANTHRACITE



602

RED/WHITE/  
DARK NAVY



701

ROYAL/WHITE/  
BLACK



883

ORANGE/DARK ROYAL/  
DARK NAVY

# DANUBIO IV

## SWEATSHIRT WITH HALF ZIP

2027



SR 104218. S / M / L / XL / 2XL / 3XL

JR 104218. 4 (6XS) / 6 (5XS) / 8 (4XS) / 10 (3XS) / 12 (2XS) / 14 (XS)

Fleece  
100% Polyester

Tejido cálido interior, cómodo y de alta durabilidad. Cuello alto y cremallera hasta el pecho con protección en barbilla. Ajuste en rib en puños.  
*Warm inner fabric, comfortable and highly durable. High collar and zipper up to the chest with chin protection. Ribbed cuffs for a snug fit.*



011

TURQUOISE FLUOR/  
WHITE/BLACK



022

FLUOR GREEN/  
WHITE/DARK NAVY



061

YELLOW FLUOR/  
BLACK/ANTHRACITE



102

BLACK/WHITE/  
ANTHRACITE



121

BLACK/YELLOW FLUOR/  
ANTHRACITE



332

DARK NAVY/  
WHITE/RED



410

VIVID GREEN/BLACK/  
ANTHRACITE



433

SURF SPRAY/  
BLACK/ANTHRACITE



602

RED/WHITE/  
DARK NAVY



653

BOYSENBERRY/WHITE/  
DARK NAVY



701

ROYAL/WHITE/  
BLACK



883

ORANGE/DARK ROYAL/  
DARK NAVY



# DANUBIO IV



## TRACKSUIT

2027



SR 104210. S / M / L / XL / 2XL / 3XL

JR 104210. 4 (6XS) / 6 (5XS) / 8 (4XS) / 10 (3XS) / 12 (2XS) / 14 (XS)

Interlock  
100% Polyester

Tejido cómodo y de alta durabilidad. Sudadera con cremallera y rib en puños y cintura. Pantalón largo con cintura ajustable y cremallera en bajo. Bolsillos en ambas prendas.  
*Comfortable and highly durable fabric. Zip-up sweatshirt with ribbed cuffs and waist. Long pants with adjustable waist and zip at the bottom. Pockets on both garments.*



701

ROYAL/WHITE/  
BLACK



023

FLUOR GREEN/  
WHITE/DARK NAVY



603

RED/WHITE/  
DARK NAVY



203

WHITE/RED/  
DARK NAVY



011

TURQUOISE FLUOR/  
WHITE/BLACK



410

VIVID GREEN/BLACK/  
ANTHRACITE



653

BOYSENBERRY/WHITE/  
DARK NAVY



883

ORANGE/DARK ROYAL/  
DARK NAVY



433

SURF SPRAY/  
BLACK/ANTHRACITE



121

BLACK/YELLOW FLUOR/  
ANTHRACITE



102

BLACK/WHITE/  
ANTHRACITE

LOOKS POLYESTER



# OLIMPIADA



## T-SHIRT

N.O.S



SR **103245.** S / M / L / XL / 2XL / 3XL / 4XL

JR **103245.** 4 (6XS) / 6 (5XS) / 8 (4XS) / 10 (3XS) / 12 (2XS) / 14 (XS)

Interlock  
100% Polyester

Camiseta de manga corta. Presenta cuello redondo en tejido base. Elaborada 100% con poliéster reciclado, un tejido ecológico, ligero, resistente y transpirable. Diseño con detalles personalizados y logotipo Joma bordado.

Short-sleeved shirt. Featuring a round neckline in the base fabric. Made with 100% recycled polyester, an ecological, lightweight, resistant, and breathable fabric. Design with personalized details and embroidered Joma logo.



**013**  
TURQUOISE FLUOR/  
DARK NAVY

**021**  
GREEN FLUOR/  
BLACK

**100**  
BLACK

**106**  
BLACK/  
RED

**107**  
BLACK/  
ROYAL

**200**  
WHITE

**251**  
LIGHT  
MELANGE

**501**  
RASPBERRY/  
BLACK



**331**  
DARK NAVY

**339**  
DARK NAVY/  
YELLOW

**422**  
CABBAGE/  
BLACK

**450**  
GREEN  
MEDIUM

**600**  
RED

**671**  
BURGUNDY/  
WHITE

**700**  
ROYAL

**881**  
ORANGE/  
BLACK

**901**  
YELLOW/  
BLACK

# OLIMPIADA



## SWEATSHIRT WITH HALF ZIP

N.O.S



SR **103708.** S / M / L / XL / 2XL / 3XL / 4XL

JR **103708.** 4 (6XS) / 6 (5XS) / 8 (4XS) / 10 (3XS) / 12 (2XS) / 14 (XS)

Fleece  
100% Polyester

Sudadera con media cremallera y cuello alto. Ajuste en rib en puños y cintura. Elaborada con tejido fleece interior para mayor calidez. Diseño con detalles personalizados y logotipo Joma bordado.

Half-zip sweatshirt with high collar. Ribbed cuffs and waist for a snug fit. Made with interior fleece fabric for added warmth. Design with personalized details and embroidered Joma logo.



**013**  
TURQUOISE FLUOR/  
DARK NAVY

**021**  
GREEN FLUOR/  
BLACK

**100**  
BLACK

**106**  
BLACK/RED

**107**  
BLACK/ROYAL

**200**  
WHITE

**251**  
MELANGE MEDIUM



**331**  
DARK NAVY

**339**  
DARK NAVY/  
YELLOW

**450**  
GREEN MEDIUM

**600**  
RED

**671**  
BURGUNDY/  
WHITE

**700**  
ROYAL

**881**  
ORANGE/  
BLACK

**901**  
YELLOW/  
BLACK



# OLIMPIADA

## HOODIE JACKET

N.O.S



SR 103707. S / M / L / XL / 2XL / 3XL / 4XL

JR 103707. 4 (6XS) / 6 (5XS) / 8 (4XS) / 10 (3XS) / 12 (2XS) / 14 (XS)

Fleece  
100% Polyester

Sudadera con cremallera completa y capucha ajustable. Con rib en puños y cintura para mejor adaptabilidad, y dos bolsillos frontales. Elaborada con tejido fleece interior para mayor calidez. Diseño con detalles personalizados y logotipo Joma bordado.

Full zip hoodie with adjustable hood. Ribbed cuffs and waist for better adaptability, and two front pockets. Made with interior fleece fabric for greater warmth. Design with personalized details and embroidered Joma logo.



**100**  
BLACK

**117**  
BLACK/FLUOR GREEN

**106**  
BLACK/RED

**107**  
BLACK/ROYAL

**200**  
WHITE

**600**  
RED

**671**  
BURGUNDY/  
WHITE



**251**  
MELANGE MEDIUM

**331**  
DARK NAVY

**339**  
DARK NAVY/  
YELLOW

**342**  
DARK NAVY/  
TURQUOISE FLUOR

**450**  
GREEN MEDIUM

**700**  
ROYAL

**881**  
ORANGE/  
BLACK

**901**  
YELLOW/  
BLACK

# OLIMPIADA

## LONG PANTS

N.O.S



SR 103741. S / M / L / XL / 2XL

JR 103741. 4 (6XS) / 6 (5XS) / 8 (4XS) / 10 (3XS) / 12 (2XS) / 14 (XS)

Interlock  
100% Polyester

Pantalón largo confeccionado con tejido cómodo, resistente y transpirable. Cintura elástica ajustable mediante cordón interior, bolsillos laterales y cremallera en el bajo. Incorpora detalles personalizados en los laterales. Logotipo Joma bordado.

Long pants made with comfortable, resistant and breathable fabric. Adjustable elastic waist with interior drawstring, side pockets and zipper at the bottom. It incorporates personalized details on the sides. Embroidered Joma logo.



**106**  
BLACK/RED

**100**  
BLACK

**107**  
BLACK/ROYAL

**117**  
BLACK/FLUOR GREEN

**331**  
DARK NAVY

**339**  
DARK NAVY/  
YELLOW

**342**  
DARK NAVY/  
TURQUOISE FLUOR

LOOKS POLYESTER



WINNER



T-SHIRT N.O.S

SR 100946.S / M / L / XL / 2XL - 3XL
JR 100946.4 (6XS) - 6 (5XS) / 8 (4XS) - 10 (3XS) / 12 (2XS) / 14 (XS)

Interlock
100% Polyester

Camiseta de manga corta con cuello redondo y canesú en la parte delantera a contraste de color. Destaca por su diseño, con el corte de la espalda adelantado y el logo bordado.
T-shirt with round collar and contrasting colour yoke at the front. Stands out due to its design, with forward shoulder seam and embroidered logo.

- 013 TURQUOISE FLUOR/ DARK NAVY
102 BLACK/ WHITE
151 ANTHRACITE/ BLACK
401 GREEN MEDIUM/ BLACK
207 WHITE/ ROYAL
331 DARK NAVY/ WHITE
601 RED/ BLACK
602 RED/ WHITE
603 RED/ DARK NAVY
702 ROYAL/ WHITE
703 ROYAL/ DARK NAVY
881 ORANGE/ BLACK
901 YELLOW/ BLACK
907 YELLOW/ ROYAL



# WINNER

## SWEATSHIRT

N.O.S



SR **100947.** S / M / L / XL / 2XL / 3XL

JR **100947.** 4 (6XS) / 6 (5XS) / 8 (4XS) / 10 (3XS) / 12 (2XS) / 14 (XS)

Fleece  
100% Polyester

Sudadera de media cremallera que destaca por el canesú a contraste, el corte de la espalda adelantado y el logo bordado.

*Half-zip sweatshirt stands out due to its contrasting yoke, forward shoulder seam and embroidered logo.*



**013**  
TURQUOISE FLUOR/  
DARK NAVY



**151**  
ANTHRACITE/  
BLACK



**601**  
RED/  
BLACK



**603**  
RED/  
DARK NAVY



**401**  
GREEN MEDIUM/  
BLACK



**703**  
ROYAL/  
DARK NAVY



**881**  
ORANGE/  
BLACK



**901**  
YELLOW/  
BLACK



**907**  
YELLOW/  
ROYAL

## TRACKSUIT TOP

N.O.S



SR **101008.** S / M / L / XL / 2XL / 3XL

JR **101008.** 4 (6XS) / 6 (5XS) / 8 (4XS) / 10 (3XS) / 12 (2XS) / 14 (XS)

Fleece  
100% Polyester

Chaqueta abierta con cremallera que destaca por el canesú a contraste y el corte de la espalda adelantado. Incorpora bolsillos con cremallera y logo bordado.

*Open jacket with zipper stands out due to contrasting yoke and forward shoulder seam. Features zipper pockets and embroidered logo.*



**013**  
TURQUOISE FLUOR/  
DARK NAVY



**151**  
ANTHRACITE/  
BLACK



**601**  
RED/  
BLACK



**603**  
RED/  
DARK NAVY



**401**  
GREEN MEDIUM/  
BLACK



**703**  
ROYAL/  
DARK NAVY



**881**  
ORANGE/  
BLACK



**901**  
YELLOW/  
BLACK



**907**  
YELLOW/  
ROYAL

LOOKS POLYESTER



# ACADEMY IV



## T-SHIRT

N.O.S



SR **101968.** S / M / L / XL / 2XL - 3XL

JR **101968.** 2 (8XS) - 3 (7XS) / 4 (6XS) - 6 (5XS) / 8 (4XS) - 10 (3XS) / 12 (2XS) / 14 (XS)

Interlock  
100% Polyester

Mangas raglán para permitir la libertad de movimiento, diseñadas con corte a contraste de color. Logotipo serigrafiado.

*T-shirt with raglan sleeves to allow freedom of movement. It features contrasting details. Silk-screened logo.*



**251**

LIGHT MELANGE/  
BLACK



**102**

BLACK/  
WHITE



**117**

BLACK/  
GREEN FLUOR



**501**

RASPBERRY/  
BLACK



**201**

WHITE/  
BLACK



**206**

WHITE/  
RED



**203**

WHITE/  
DARK NAVY



**207**

WHITE/  
ROYAL



**702**

ROYAL/  
WHITE



**451**

GREEN MEDIUM/  
BLACK



**602**

RED/  
WHITE



**336**

DARK NAVY/  
RED



**342**

DARK NAVY/  
TURQUOISE FLUOR



**063**

YELLOW FLUOR/  
DARK NAVY



**901**

YELLOW/  
BLACK



**081**

AMBER/  
BLACK



**881**

ORANGE/  
BLACK



# ACADEMY IV



LOOKS POLYESTER

## T-SHIRT

N.O.S



SR 901335. S / M / L / XL / 2XL

JR 901335. 12 (2XS) / 14 (XS)

Interlock  
100% Polyester

Camiseta de manga corta ranglán y con cuello redondo. Logotipo serigrafiado.  
*T-shirt with raglan sleeves to allow freedom of movement. Silk-screened logo.*



**251**  
LIGHT MELANGE/  
BLACK



**102**  
BLACK/  
WHITE



**117**  
BLACK/  
GREEN FLUOR



**451**  
GREEN MEDIUM/  
BLACK



**501**  
RASPBERRY/  
BLACK



**201**  
WHITE/  
BLACK



**206**  
WHITE/  
RED



**203**  
WHITE/  
DARK NAVY



**207**  
WHITE/  
ROYAL



**702**  
ROYAL/  
WHITE



**602**  
RED/  
WHITE



**336**  
DARK NAVY/  
RED



**342**  
DARK NAVY/  
TURQUOISE FLUOR



**063**  
YELLOW FLUOR/  
DARK NAVY



**901**  
YELLOW/  
BLACK



**881**  
ORANGE/  
BLACK



# ACADEMY IV



## HOODIE JACKET

N.O.S



SR 101967. S / M / L / XL / 2XL / 3XL

JR 101967. 2 (8XS) / 3 (7XS) / 4 (6XS) / 6 (5XS) / 8 (4XS) / 10 (3XS) / 12 (2XS) / 14 (XS)

Fleece  
100% Polyester

Chaqueta abierta con cremallera. Cuenta con bolsillos, capucha ajustable mediante cordones. Los puños y el bajo son de rib para proporcionar ajuste y comodidad. Logo J estampado.

Open jacket with zip. Includes pockets, adjustable drawstring on hood. Cuffs and hem are ribbed for fit and comfort. Printed logo.



**117**  
BLACK/  
GREEN FLUOR



**151**  
ANTHRACITE/  
BLACK



**203**  
WHITE/  
DARK NAVY



**342**  
DARK NAVY/  
TURQUOISE FLUOR



**601**  
RED/  
BLACK



**703**  
ROYAL/  
DARK NAVY



**881**  
ORANGE/  
BLACK



**901**  
YELLOW/  
BLACK



## HOODIE JACKET

N.O.S



SR 901336. S / M / L / XL / 2XL

JR 901336. 12 (2XS) / 14 (XS)



**117**  
BLACK/  
GREEN FLUOR



**151**  
ANTHRACITE/  
BLACK



**203**  
WHITE/  
DARK NAVY



**342**  
DARK NAVY/  
TURQUOISE FLUOR



**601**  
RED/  
BLACK



**703**  
ROYAL/  
DARK NAVY



**881**  
ORANGE/  
BLACK



**901**  
YELLOW/  
BLACK





# ACADEMY IV



LOOKS POLYESTER

## TRACKSUIT

N.O.S



SR 101966. S / M / L / XL / 2XL / 3XL

JR 101966. 2 (8XS) / 3 (7XS) / 4 (6XS) / 6 (5XS) / 8 (4XS) / 10 (3XS) / 12 (2XS) / 14 (XS)

Tricot  
100% Polyester

Chándal de dos piezas formado por chaqueta abierta con cremallera y cuello alto. Incorpora rib en puños y bajo para mayor ajuste y comodidad. Logotipo estampado. Pantalón largo con cintura elástica ajustable mediante cordones, bolsillos y rib en el bajo. Logotipo estampado.

Full tracksuit. Open jacket with zip and pockets. Cuffs, collar and hem are ribbed for optimum fit. Printed logo. Trousers with elastic drawstring on waist. Includes ribbed material on cuffs for a comfortable fit. Includes side pockets. Embroidered logo.



**117**  
BLACK/  
GREEN FLUOR



**151**  
ANTHRACITE/  
BLACK



**203**  
WHITE/  
DARK NAVY



**342**  
DARK NAVY/  
TURQUOISE FLUOR



**601**  
RED/  
BLACK



**703**  
ROYAL/  
DARK NAVY



**881**  
ORANGE/  
BLACK

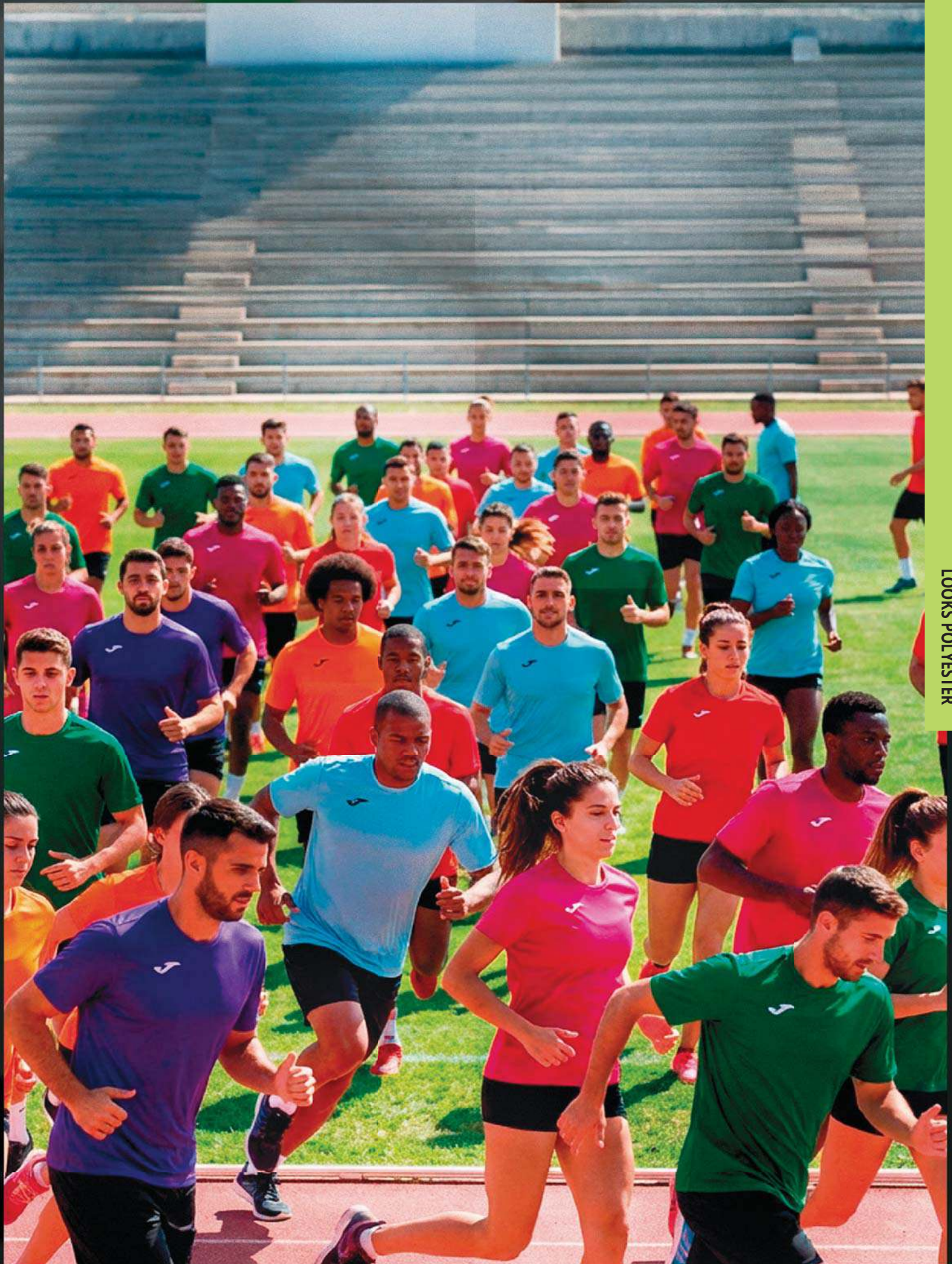


**901**  
YELLOW/  
BLACK



## COMBI





LOOKS POLYESTER



# COSTA MICRO



JACKET

N.O.S



SR 103825. S / M / L / XL / 2XL / 3XL / 4XL

SR 103825. 12 (2XS) / 14 (XS)

Microfiber  
100% Polyester  
Cotton feeling

Sudadera con cremallera completa. Equipada con cuello alto y dos bolsillos laterales con cierre de cremallera invisible. Elaborada con tejido cómodo y transpirable. Logotipo Joma bordado.

Full zip sweatshirt. Featuring a high collar and two side pockets with invisible zipper closure. Made with comfortable and breathable fabric. Joma logo embroidered.



100  
BLACK



200  
WHITE



331  
DARK NAVY



600  
RED



700  
ROYAL



# COSTA MICRO



LONG PANTS

N.O.S



SR 103824. S / M / L / XL / 2XL / 3XL / 4XL

SR 103824. 12 (2XS) / 14 (XS)

Microfiber  
100% Polyester  
Cotton feeling

Pantalón largo con cinturilla elástica ajustable mediante cordón interior. Corte skinny con cremallera en el bajo y dos bolsillos laterales. Logotipo Joma bordado.

Long pants with an adjustable elastic waistband and inner drawstring. Tight fit with a zipper at the bottom and two side pockets. Embroidered Joma logo.



100  
BLACK



331  
DARK NAVY



ELASTICO CON  
CREMALLERA  
CUFF WITH ZIPPER





# DOHA

JACKET **N.O.S**

**SR 101579.** S / M / L / XL / 2XL / 3XL / 4XL  
**JR 101579.** 4 (6XS) / 6 (5XS) / 8 (4XS) / 10 (3XS) / 12 (2XS) / 14 (XS)

Microfiber  
95% Polyester  
5% Elastan

Chaqueta abierta con cremallera. No cuenta con forro interior. Puños y cintura con elástico interior. Logo J bordado.  
*Zip-up jacket. Unlined. Elasticated cuffs and hem. Embroidered J logo.*



**100**  
BLACK



**200**  
WHITE



**331**  
DARK NAVY



**450**  
GREEN MEDIUM



**600**  
RED



**700**  
ROYAL

LOOKS POLYESTER



# TIRRENO

LONG PANTS **N.O.S**

**SR 101580.** S / M / L / XL / 2XL / 3XL / 4XL  
**JR 101580.** 4 (6XS) / 6 (5XS) / 8 (4XS) / 10 (3XS) / 12 (2XS) / 14 (XS)

Microfiber  
95% Polyester  
5% Elastan

Pantalón sin forro interior. Cuenta con cintura elástica y cordón interior. Logo J bordado.  
*Unlined trousers. Elasticated waistband with drawstring. Embroidered J logo.*



**100**  
BLACK



**331**  
DARK NAVY



## HOODIE JACKET

N.O.S

# MENFIS



SR 101303. S / M / L / XL / 2XL

JR 101303. 4 (6XS) / 6 (5XS) / 8 (4XS) / 10 (3XS) / 12 (2XS) / 14 (XS)

Fleece  
100% Polyester

Chaqueta abierta con cremallera completa y capucha. Incluye bolsillos y rib en los puños y en la cintura para un ajuste perfecto. Interior en felpa que aporta confortabilidad. Logotipo bordado.

Open jacket with full zip and hood. Includes pockets and ribbed detail on the cuffs and waist for a perfect fit. Plush interior to add comfort. Embroidered logo.



010

TURQUOISE FLUOR

020

FLUOR GREEN

050

FLUOR ORANGE

100

BLACK

150

DARK MELANGE



200

WHITE

331

DARK NAVY

450

GREEN MEDIUM

600

RED

671

BURGUNDY

700

ROYAL



## LONG PANTS

N.O.S

# ELBA



SR 100540. S / M / L / XL / 2XL / 3XL

JR 100540. 4 (6XS) / 6 (5XS) / 8 (4XS) / 10 (3XS) / 12 (2XS) / 14 (XS)

SR 100540.

JR 100540.

Fleece  
100% Polyester

Pantalón largo con diseño pitillo y abertura lateral con cremallera y fuelle para poner y quitar la prenda con facilidad. Incluye bolsillos con cremalleras y cintura elástica con cordón para un mejor ajuste.

Long skinny pants with side openings on the lower part including zipper and inverted pleat so the garment can be easily removed. Includes zipper pockets and elastic waist for optimal fit.



BOLSILLO CON  
CREMALLERA  
POCKET  
WITH ZIPPER

CREMALLERA  
ZIPPER

331

DARK NAVY

100

BLACK

150

LIGHT MELANGE

## LONG PANTS

N.O.S

# CLEO II



SR 101334. S / M / L / XL / 2XL / 3XL

JR 101334. 4 (6XS) / 6 (5XS) / 8 (4XS) / 10 (3XS) / 12 (2XS) / 14 (XS)

SR 101334.

JR 101334.

Fleece  
100% Polyester

Pantalón largo de diseño recto que incluye bolsillos laterales. Cintura elástica con cordón para un mejor ajuste. Logotipo bordado.

Long straight trousers with side pockets. Elastic waist with drawstring for a better fit. Embroidered logo.



BOLSILLO  
POCKET

100

BLACK

331

NAVY

700

ROYAL

600

RED



# GALA

JACKET

N.O.S



SR 100086.S / M / L / XL / 2XL / 3XL

JR 100086.4 (6XS) / 6 (5XS) / 8 (4XS) / 10 (3XS) / 12 (2XS) / 14 (XS)

Tricot  
100% Polyester

Chaqueta abierta con cremallera que incluye rib en puños y en la cintura para un mejor ajuste. Bolsillos con cremalleras. Logotipo bordado.

Open jacket with zipper and ribbing at cuffs and waist for optimal fit. Zipped side pockets. Embroidered logo.



**010**  
TURQUOISE FLUOR



**100**  
BLACK



**200**  
WHITE



**300**  
DARK NAVY



**350**  
SKY



**450**  
GREEN MEDIUM



**550**  
VIOLET



**600**  
RED



**671**  
BURGUNDY



**800**  
ORANGE



**700**  
ROYAL



**900**  
YELLOW

# CANNES II

LONG PANTS

N.O.S



SR 101112. S / M / L / XL / 2XL / 3XL

JR 101112.4 (6XS) / 6 (5XS) / 8 (4XS) / 10 (3XS) / 12 (2XS) / 14 (XS)

Tricot  
100% Polyester

BOLSILLO CON  
CREMALLERA  
POCKET WITH ZIPPER

Pantalón largo con diseño recto y bolsillo con cremalleras. Incluye cintura elástica con cordón para un ajuste óptimo.

Long straight pants with zipped pockets. It includes pockets and adjustable elastic drawstring for optimal fit.



**100**  
BLACK



**331**  
DARK NAVY

# ESTADIO II

LONG PANTS

N.O.S



SR 101113. S / M / L / XL / 2XL / 3XL

JR 101113.4 (6XS) / 6 (5XS) / 8 (4XS) / 10 (3XS) / 12 (2XS) / 14 (XS)

Tricot  
100% Polyester

Pantalón largo con abertura lateral en el bajo para poner y quitar con facilidad. Incluye bolsillos y cintura elástica con cordón para un mejor ajuste.

Long pants with side openings on the lowdown so the garment can be easily removed. It includes pockets and adjustable elastic drawstring for optimal fit.



**100**  
BLACK



ELASTICO CON  
CREMALLERA  
CUFF WITH ZIPPER



**331**  
DARK NAVY

LOOKS POLYESTER



# HOBBY



POLO

N.O.S



SR 100437. S / M / L / XL / 2XL / 3XL

JR 100437. 4 (6XS) / 6 (5XS) / 8 (4XS) / 10 (3XS) / 12 (2XS) / 14 (XS)

94% Polyester  
6% Cotton

Polo diseñado con cuello tipo camisa con botones personalizados.  
*Polo-shirt featuring a shirt neck with customized buttons.*



**200**  
WHITE

**600**  
RED

**050**  
ORANGE FLUOR

**010**  
TURQUOISE  
FLUOR

**331**  
NAVY

**700**  
ROYAL

**350**  
SKY



**671**

BURGUNDY

**250**

LIGHT MELANGE

**020**

GREEN FLUOR

**450**

GREEN MEDIUM

**900**

YELLOW

**100**

BLACK



SR 900247. S / M / L / XL / 2XL

JR 900247. 12 (2XS) / 14 (XS)



**200**

WHITE

**600**

RED

**050**

ORANGE FLUOR

**010**

TURQUOISE  
FLUOR

**331**

NAVY

**700**

ROYAL

**350**

SKY



**671**

BURGUNDY

**250**

LIGHT MELANGE

**020**

GREEN FLUOR

**450**

GREEN MEDIUM

**900**

YELLOW

**100**

BLACK





# HOBBY II

POLO N.O.S



SR 101371. S / M / L / XL / 2XL / 3XL

JR 101371. 4 (6XS) / 6 (5XS) / 8 (4XS) / 10 (3XS) / 12 (2XS) / 14 (XS)

94% Polyester  
6% Cotton

Polo que se caracteriza por el contraste de color entre el cuello y el delantero respecto al canesú y las mangas. Cuello abotonado. Logotipo bordado.

*Polo that is characterised by the colour of the collar and front that contrasts with the yoke and sleeves. Button neck. Embroidered logo.*



# COMBI

SHORTS N.O.S



SR 103818. S / M / L / XL / 2XL / 3XL

JR 103818. 6 (5XS) / 8 (4XS) / 10 (3XS) / 12 (2XS) / 14 (XS)

Microfiber  
100% Polyester  
Cotton feeling

Short con cinturilla elástica ajustable mediante cordón interior. Equipado con dos bolsillos laterales con cierre de cremallera. Fabricación en tejido confortable y transpirable. Logotipo Joma bordado.

*Shorts with an adjustable elastic waistband and inner drawstring. Two side pockets with zipper closure. Made with comfortable and breathable fabric. Embroidered Joma logo.*



# COMBI WOMAN

SHORT N.O.S



SR 902254. S / M / L / XL

Microfiber  
100% Polyester  
Cotton feeling



LOOKS POLYESTER



# FARAON



## SWEATSHIRT WITH HALF ZIP

N.O.S



SR 100285. S / M / L / XL / 2XL

JR 100285. 4 (6XS) / 6 (5XS) / 8 (4XS) / 10 (3XS) / 12 (2XS) / 14 (XS)

Fleece  
100% Polyester

Sudadera perchada que se caracteriza por su diseño con media cremallera. Incluye ribs en los puños y en la cintura para un mejor ajuste. Logotipo bordado.

*Felt sweatshirt with rounded collar. It includes ribbing at cuffs and waist for optimal fit. Embroidered logo.*



010

TURQUOISE FLUOR

020

FLUOR GREEN

050

ORANGE

100

BLACK

150

DARK MELANGE



200

WHITE

300

DARK NAVY

450

GREEN MEDIUM

600

RED

671

BURGUNDY

700

ROYAL



# CAIRO II



## SWEATSHIRT

N.O.S



SR 101333. S / M / L / XL / 2XL

JR 101333. 4 (6XS) / 6 (5XS) / 8 (4XS) / 10 (3XS) / 12 (2XS) / 14 (XS)

Fleece  
100% Polyester

Sudadera perchada diseñada con cuello redondo. Incluye rib en los puños y la cintura para un mejor ajuste. Logotipo bordado.

*Felt sweatshirt with rounded collar. It includes ribbing at cuffs and waist for optimal fit. Embroidered logo.*



010

TURQUOISE FLUOR

020

FLUOR GREEN

050

ORANGE

100

BLACK



150

DARK MELANGE

200

WHITE

331

DARK NAVY

600

RED

700

ROYAL





# SENA



## SWEATSHIRT

N.O.S



SR 101821. S / M / L / XL / 2XL / 3XL

JR 101821. 4 (6XS) / 6 (5XS) / 8 (4XS) / 10 (3XS) / 12 (2XS) / 14 (XS)

Fleece  
100% Polyester

Sudadera con cuello alto elástico. Los puños y el bajo están confeccionados en material rib para aportar un ajuste cómodo. El interior es de felpa para proporcionar el máximo confort y calidez. Logotipo serigrafiado.

Long neck sweatshirt with elastic. The cuffs and hem are ribbed to provide a comfortable fit. The interior is made with fleece fabrics to provide maximum comfort. Silk-screened logo.



**331**  
DARK NAVY



**700**  
ROYAL



**100**  
BLACK



**600**  
RED

# COMBI



## LONG SLEEVES

N.O.S



SR 100092. S / M / L / XL / 2XL - 3XL

JR 100092. 4 (6XS) - 6 (5XS) / 8 (4XS) - 10 (3XS) / 12 (2XS) / 14 (XS)

Interlock  
100% Polyester

Camiseta de manga larga diseñada en cuello redondo.

Long sleeve shirt with rounded collar.



**600**  
RED



**700**  
ROYAL



**900**  
YELLOW



**200**  
WHITE



**331**  
DARK NAVY



**450**  
GREEN MEDIUM



**100**  
BLACK

NEW

# COMBI



## SLEEVELESS

N.O.S



SR 100436. S / M / L / XL / 2XL - 3XL

JR 100436. 4 (6XS) - 6 (5XS) / 8 (4XS) - 10 (3XS) / 12 (2XS) / 14 (XS)

Interlock  
100% Polyester

Camiseta sin mangas diseñada con cuello de pico. Logo J serigrafiado.

Sleeveless shirt with V-neck. Screen printed J logo.



**100**  
BLACK



**200**  
WHITE



**331**  
DARK NAVY



**450**  
GREEN MEDIUM



**600**  
RED



**700**  
ROYAL



**880**  
ORANGE



**900**  
YELLOW

LOOKS POLYESTER



# COMBI



## T-SHIRT

N.O.S



SR 100052. S / M / L / XL / 2XL - 3XL

SR 100052. 2 (8XS) - 3 (7XS) / 4 (6XS) - 6 (5XS) / 8 (4XS) - 10 (3XS) / 12 (2XS) / 14 (XS)

Interlock  
100% Polyester

Camiseta diseñada en cuello redondo. Logo J serigrafiado.  
T-shirt with rounded collar. Screen printed J logo.



**002**  
VANILLA



**010**  
TURQUOISE  
FLUOR



**020**  
GREEN FLUOR



**040**  
DARK ORANGE  
FLUOR



**100**  
BLACK



**150**  
DARK MELANGE



**200**  
WHITE



**250**  
LIGHT MELANGE



**271**  
LUNAR ROCK



**331**  
DARK NAVY



**350**  
SKY



**422**  
BLUE GRASS



**424**  
PARADISE  
GREEN



**450**  
GREEN MEDIUM



**500**  
RASPBERRY



**550**  
VIOLET



**560**  
RASPBERRY  
WINE



**600**  
RED



**671**  
BURGUNDY



**700**  
ROYAL



**726**  
TURQUOISE  
GREEN



**880**  
ORANGE



**900**  
YELLOW



# COMBI



## T-SHIRT

2027



SR 900248. S / M / L / XL / 2XL

JR 900248. 12 (2XS) / 14 (XS)

Interlock  
100% Polyester

Camiseta diseñada en cuello redondo. Logo J serigrafiado.

*T-shirt with rounded collar. Screen printed J logo.*



**010**  
TURQUOISE  
FLUOR



**020**  
GREEN FLUOR



**040**  
DARK ORANGE FLUOR



**100**  
BLACK



**150**  
DARK MELANGE



**200**  
WHITE



**250**  
LIGHT MELANGE



**331**  
DARK NAVY



**350**  
SKY



**450**  
GREEN MEDIUM



**500**  
RASPBERRY



**550**  
VIOLET



**600**  
RED



**671**  
BURGUNDY



**700**  
ROYAL



**880**  
ORANGE



**900**  
YELLOW

LOOKS POLYESTER



# DIANA



SLEEVELESS

N.O.S



SR 900038. S / M / L / XL

JR 900038. 8 (4XS) - 10 (3XS) / 12 (2XS) / 14 (XS)

Interlock  
100% Polyester

Camiseta de tirantes con cuello redondo. Logo J bordado.  
*Sleeveless t-shirt with rounded collar. Embroidered J logo.*



**600**  
RED



**050**  
ORANGE FLUOR



**020**  
GREEN FLUOR



**100**  
BLACK



**150**  
DARK MELANGE



**250**  
LIGHT MELANGE



**350**  
SKY



**331**  
DARK NAVY



**450**  
GREEN MEDIUM



**550**  
VIOLET



**671**  
BURGUNDY



**880**  
ORANGE



**900**  
YELLOW



# SIENA



SLEEVELESS

N.O.S



SR 900703. S / M / L / XL

JR 900703. 8 (4XS) - 10 (3XS) / 12 (2XS) / 14 (XS)

Light jacquard  
100% Polyester

Camiseta de tirantes con cuello redondo que incorpora la tecnología Micro-Mesh para favorecer la transpiración y el logo en serigrafía.  
*Sleeveless t-shirt with rounded collar incorporating Micro-Mesh technology in the underarms for breathability and silkscreened logo.*



**010**  
TURQUOISE FLUOR



**040**  
DARK ORANGE FLUOR



**060**  
YELLOW FLUOR



**100**  
BLACK



**200**  
WHITE



**331**  
DARK NAVY



**400**  
LIME PUNCH



**500**  
MID-VIOLET



**700**  
ROYAL





# EVENTOS



T-SHIRT

N.O.S

PACK 25



SR 105463. S / M / L / XL / 2XL

JR 105463. 4 (6XS) / 6 (5XS) / 8 (4XS) / 10 (3XS) / 12 (2XS) / 14 (XS)

Light jacquard  
100% Polyester

Camiseta de manga corta con cuello redondo. Incorpora costuras Flatlock en las mangas para evitar rozaduras, logo serigrafiado y tecnología Micro-mesh para favorecer la transpiración del deportista.

*Short-sleeved T-shirt with a round collar. Features flatlock seams on sleeves to prevent chafing, silkscreened logo, and Micro-Mesh technology to assist the sportsperson's breathability.*



**040**  
DARK ORANGE FLUOR



**100**  
BLACK



**200**  
WHITE



**250**  
GREY MEDIUM



**400**  
LIME PUNCH



**450**  
GREEN MEDIUM



**600**  
RED



**700**  
ROYAL



**900**  
YELLOW



# EVENTOS



T-SHIRT

N.O.S

PACK 25



SR 900475. S / M / L / XL / 2XL

Light jacquard  
100% Polyester

Camiseta de manga corta con cuello redondo. Incorpora costuras Flatlock en las mangas para evitar rozaduras, logo serigrafiado y tecnología Micro-mesh para favorecer la transpiración del deportista.

*Short-sleeved T-shirt with a round collar. Features flatlock seams on sleeves to prevent chafing, silkscreened logo, and Micro-Mesh technology to assist the sportsperson's breathability.*



**040**  
DARK ORANGE FLUOR



**400**  
LIME PUNCH



**500**  
MID-VIOLET



**200**  
WHITE



**700**  
ROYAL



**600**  
RED



Estadio II.  
Gladiator II.  
Elba.  
Gladiator.  
Leeds.  
Jungle.



Stimulus.  
Cannes III.  
Pelota  
Costa Micro.  
Tirreno.  
Cleo II.  
Cannes II.  
Suez.



Record Pro / Elite XI.  
Eco Retro / Heroic.  
Championship 20<sup>o</sup>  
Championship VIII.  
Combi Premium.  
Olimpiada.  
Vintage Eco-Pro  
Combi Gold y Advance II.  
Staff / Nilo / Montana.



Capri.  
Vela.  
Luxor.



Rookie.  
Nobel long.



Heroic.  
Terra Danubio  
Master.  
Drive.  
Combi.  
Miami.  
Open III.  
Costa II.  
Cannes.  
Jungle Short.



Pro-Short.  
Glasgow II.  
Tokio II.  
Maxi.  
Nobel.  
Treviso.  
Respect III.  
Vintage. Eco-Retro.



Try.  
Hook.  
Tyro.



Elite XI.



Record.



Elite XI.



Combi Running.  
Olimpia.  
Record III.  
Trail.

# FIT GUIDE



Mare.



Taro II.



Championship 20<sup>o</sup>  
Elite XI.  
Advance II.  
Nilo.  
Latino III.



Torneo II.  
Elite XI



Nobel.



Heroic.  
Tokio II.  
Terra Danubio.  
Combi y Hobby II.  
Maxi y Paris II.



Vela II.  
Olimpia.



Stella II.  
Ibiza.  
Hobby.



Ascona  
Dase II.  
Latino IV.  
Olimpia.  
Elite XI..



Sculpture.



Olimpia.  
Dase II.



Sculpture.



Elite XI.



Torneo III.  
Katty.



Torneo.  
Montreal.Open II.



## PANTS



LOOKS POLYESTER



## LONG PANTS

2027

# VINTAGE ECO-PRO



SR 104979. S / M / L / XL / 2XL / 3XL

JR 104979. 4 (6XS) / 6 (5XS) / 8 (4XS) / 10 (3XS) / 12 (2XS) / 14 (XS)

Interlock shiny  
100% Polyester

Tejido cómodo y de alta durabilidad. Cintura elástica con cordón interior. Bajo con cremallera. Bolsillos con cierre de cremallera. Detalle ribeteado a contraste.

*Comfortable and highly durable fabric. Elastic waistband with internal drawstring. Zippered hem. Zippered pockets. Contrast trim detail.*



**100**  
BLACK



**331**  
DARK NAVY



## LONG PANTS

2027

# COMBI PREMIUM



SR 104496. S / M / L / XL / 2XL / 3XL / 4XL / 5XL

JR 104496. 4 (6XS) / 6 (5XS) / 8 (4XS) / 10 (3XS) / 12 (2XS) / 14 (XS)

H600 Interlock  
100% Polyester

Tejido cómodo y de alta durabilidad. Cinturilla elástica ajustable. Bolsillos laterales con cremallera.

*Comfortable and highly durable fabric. Adjustable elastic waistband. Side pockets with zipper.*



**100**  
BLACK



**331**  
DARK NAVY



## LONG PANTS

2027

# ELITE XI



SR 103814. S / M / L / XL / 2XL

JR 103814. 12 (2XS) / 14 (XS)

Interlock  
95% Polyester  
5% Spandex  
Antibacterial

Pantalón largo con cinturilla elástica ajustable. Incorpora dos bolsillos laterales con cierre de cremallera. Elaborado con tejido elástico, costuras termoselladas para prevenir rozaduras y acabados en corte láser. Logotipo Joma en printing.

*Long pants with adjustable elastic waistband. Includes two side pockets with zipper closure. Made with elastic fabric, thermosealed seams to prevent any rubbing, and laser-cut finish. Joma logo in printing.*



**100**  
BLACK



**331**  
DARK NAVY





# COSTA MICRO

LONG PANTS

N.O.S



SR 103824. S / M / L / XL / 2XL / 3XL / 4XL

JR 103824. 12 (2XS) / 14 (XS)

Microfiber  
100% Polyester  
Cotton feeling

Pantalón largo con cinturilla elástica ajustable mediante cordón interior. Corte skinny con cremallera en el bajo y dos bolsillos laterales. Logotipo Joma bordado.

*Long pants with an adjustable elastic waistband and inner drawstring. Tight fit with a zipper at the bottom and two side pockets. Embroidered Joma logo.*



100  
BLACK



331  
DARK NAVY



ELASTICO CON  
CREMALLERA  
CUFF WITH ZIPPER



# TIRRENO

LONG PANTS

N.O.S



SR 101580. S / M / L / XL / 2XL / 3XL / 4XL

JR 101580. 4 (6XS) / 6 (5XS) / 8 (4XS) / 10 (3XS) / 12 (2XS) / 14 (XS)

Microfiber  
95% Polyester  
5% Elastan

Pantalón sin forro interior. Cuenta con cintura elástica y cordón interior. Logo J bordado.

*Unlined trousers. Elasticated waistband with drawstring. Embroidered J logo.*



100  
BLACK



331  
DARK NAVY





**331**  
DARK NAVY

**100**  
BLACK

## CHAMPIONSHIP 20°



### LONG PANTS

2029



SR **105202.** S / M / L / XL / 2XL / 3XL

JR **105202.** 4 (6XS) / 6 (5XS) / 8 (4XS) / 10 (3XS) / 12 (2XS) / 14 (XS)

Jacquard  
100% Recycled  
polyester

Tejido cómodo 100% poliéster reciclado. Cintura elástica con cordón interior. Bolsillos con cremallera.

*Comfortable fabric made from 100% recycled polyester. Elastic waistband with inner drawstring. Zip pockets.*



**331**  
DARK NAVY

**100**  
BLACK

## GLADIATOR II



### LONG PANTS

N.O.S



SR **100786.** S / M / L / XL / 2XL

Interlock  
100% Polyester

Pantalón largo de pitillo. Cintura elástica ajustable con cordón.

*Long skinny pants. Adjustable elastic drawstring waist.*



**100**  
BLACK

**331**  
NAVY

**700**  
ROYAL

**600**  
RED

CREMALLERA  
ZIPPER

## GLADIATOR



### LONG PANTS

N.O.S



SR **105457.** S / M / L / XL / 2XL

JR **105457.** 8 (4XS) / 10 (3XS) / 12 (2XS) / 14 (XS)

Interlock  
100% Polyester

Pantalón largo indicado para deportistas que buscan la máxima comodidad y transpirabilidad.

*Long pants for sportspeople looking for maximum comfort and breathability.*



### LONG PANTS

N.O.S

## OLIMPIADA



SR **103741.** S / M / L / XL / 2XL / 3XL / 4XL

JR **103741.** 4 (6XS) / 6 (5XS) / 8 (4XS) / 10 (3XS) / 12 (2XS) / 14 (XS)

Interlock  
100% Polyester

Pantalón largo confeccionado con tejido cómodo, resistente y transpirable. Cintura elástica ajustable mediante cordón interior, bolsillos laterales y cremallera en el bajo. Incorpora detalles personalizados en los laterales. Logotipo Joma bordado.

*Long pants made with comfortable, resistant and breathable fabric. Adjustable elastic waist with interior drawstring, side pockets and zipper at the bottom. It incorporates personalized details on the sides. Embroidered Joma logo.*



**106**  
BLACK/RED

**100**  
BLACK

**107**  
BLACK/ROYAL

**117**  
BLACK/FLUOR GREEN

**331**  
DARK NAVY

**339**  
DARK NAVY/  
YELLOW

**342**  
DARK NAVY/  
TURQUOISE FLUOR



# STAFF

## LONG PANTS

N.O.S



SR 100027. S / M / L / XL / 2XL / 3XL

JR 100027. 3 (7XS) / 4 (6XS) / 6 (5XS) / 8 (4XS) / 10 (3XS) / 12 (2XS) / 14 (XS)

Interlock  
100% Polyester

Pantalón largo con diseño pitillo y abertura lateral con cremalleras y fuelle para poner y quitar la prenda con facilidad. Incluye bolsillos con cremalleras y cintura elástica para un ajuste óptimo.

*Long skinny pants with side openings on the lower part including zipper and inverted pleat so the garment can be easily removed. It features zipped pockets and elastic waist for optimal fit.*

BOLSILLO  
POCKET



100  
BLACK

331  
DARK NAVY



SR 902689. S / M / L / XL

Interlock  
100% Polyester

Pantalón largo con diseño pitillo y abertura lateral con cremalleras y fuelle para poner y quitar la prenda con facilidad. Incluye bolsillos con cremalleras y cintura elástica para un ajuste óptimo.

*Long skinny pants with side openings on the lower part including zipper and inverted pleat so the garment can be easily removed. It features zipped pockets and elastic waist for optimal fit.*

BOLSILLO  
POCKET



100  
BLACK

331  
DARK NAVY

# COMBI GOLD



## LONG PANTS

N.O.S



SR 100761. S / M / L / XL / 2XL / 3XL

JR 100761. 4 (6XS) / 6 (5XS) / 8 (4XS) / 10 (3XS) / 12 (2XS) / 14 (XS)

Interlock  
100% Polyester

Pantalón pitillo con bolsillos y aberturas laterales en el bajo con cremalleras para quitar y poner con facilidad. Cintura elástica ajustable con cordón y logos serigrafados en los laterales.

*Long skinny pants with pockets and side zipped openings on the lower part so the garment can be easily removed. Adjustable elastic drawstring waist and silk-screen printed logos on the sides.*

BOLSILLO CON  
CREMALLERA  
POCKET WITH ZIPPER



100  
BLACK/BLACK

102  
BLACK/WHITE

106  
BLACK/RED

117  
BLACK/  
FLUOR GREEN

302  
DARK NAVY/WHITE

306  
DARK NAVY/RED

309  
DARK NAVY/  
YELLOW

331  
DARK NAVY

342  
DARK NAVY/  
FLUOR TURQUOISE

# CANNES III

## LONG PANTS

N.O.S



SR 101663. S / M / L / XL / 2XL

JR 101663. 4 (6XS) / 6 (5XS) / 8 (4XS) / 10 (3XS) / 12 (2XS) / 14 (XS)

Interlock  
100% Polyester

Pantalón largo recto, con bolsillos, cintura elástica ajustable mediante cordón. Logo J bordado.

*Long straight trousers with pockets. Elasticated waistband with adjustable drawstring. Embroidered J logo.*

BOLSILLO  
POCKET



100  
BLACK

200  
WHITE

331  
DARK NAVY



# HEROIC

## LONG PANTS

2028



SR 105138. S / M / L / XL / 2XL / 3XL

JR 105138. 4 (6XS) / 6 (5XS) / 8 (4XS) / 10 (3XS) / 12 (2XS) / 14 (XS)

Fleece  
100% Polyester

Tejido cálido y cómodo. Cintura elástica con cordón interior. Bolsillos con cremallera.  
*Warm and comfortable fabric. Elastic waistband with inner drawstring. Zip pockets.*



**100**  
BLACK



**150**  
ANTHRACITE



**331**  
DARK NAVY



**471**  
JUNE BUG



**680**  
WINE



**700**  
ROYAL



# CHAMPIONSHIP VIII

## LONG PANTS

2028



SR 104281. S / M / L / XL / 2XL / 3XL / 4XL

JR 104281. 4 (6XS) / 6 (5XS) / 8 (4XS) / 10 (3XS) / 12 (2XS) / 14 (XS)

Fleece  
100% Polyester

Tejido cálido interior, cómodo y de alta durabilidad. Cintura elástica ajustable. Bolsillos con cremallera. Detalles sublimados.  
*Warm inner fabric, comfortable and highly durable. Adjustable elastic waist. Zippered pockets. Sublimated details.*



**102**  
BLACK/WHITE



**106**  
BLACK/RED



**109**  
BLACK/YELLOW



**332**  
DARK NAVY/WHITE



**336**  
DARK NAVY/RED



**337**  
DARK NAVY/  
ROYAL



**339**  
DARK NAVY/YELLOW



**342**  
DARK NAVY/  
TURQUOISE FLUOR





# ADVANCE II

LONG PANTS

N.O.S



SR 103838. S / M / L / XL / 2XL / 3XL

JR 103838. 4 (6XS) / 6 (5XS) / 8 (4XS) / 10 (3XS) / 12 (2XS) / 14 (XS)

Fleece  
90% Polyester  
10% Spandex

Pantalón largo. Incorpora cinturilla elástica ajustable mediante cordón interior. Corte skinny. Elaborados con tejido elástico y fleece interior para mayor confort y libertad de movimiento. Logotipo Joma en printing.

*Long pants. Incorporates an adjustable elastic waistband with an interior drawstring. Tight fit. Made with elastic fabric and inner fleece for greater comfort and freedom of movement. Joma logo in printing.*



**100**  
BLACK



**331**  
DARK NAVY



# ADVANCE II

LONG PANTS

N.O.S



SR 902260. S / M / L / XL

Fleece  
90% Polyester  
10% Spandex

Pantalón largo con cinturilla elástica ajustable mediante cordón interior. Corte skinny. Fabricación en tejido confortable y elástico con fleece interior. Logotipo Joma en printing.

*Long pants with an adjustable elastic waistband with inner drawstring. Tight fit. Made with a comfortable and elastic fabric with inner fleece. Joma logo in printing.*



**331**  
DARK NAVY

BOLSILLO CON  
CREMALLERA  
POCKET WITH ZIPPER



**100**  
BLACK



LOOKS POLYESTER



# CLEO II

LONG PANTS

**N.O.S**



**SR 101334.** S / M / L / XL / 2XL / 3XL

**JR 101334.** 4 (6XS) / 6 (5XS) / 8 (4XS) / 10 (3XS) / 12 (2XS) / 14 (XS)

Fleece  
100% Polyester

Pantalón largo de diseño recto que incluye bolsillos laterales. Cintura elástica con cordón para un mejor ajuste. Logotipo bordado.

*Long straight trousers with side pockets. Elastic waist with drawstring for a better fit. Embroidered logo.*



# NILO

LONG PANTS

**N.O.S**

Pantalón largo perchado con estilo pitillo y aberturas en el bajo con cremallera y fuelle para quitar y poner la prenda con facilidad. Incluye bolsillos sin cremalleras y cintura elástica con cordón para un ajuste óptimo.

*Long felt skinny pants with side openings on the lower part including zipper and inverted pleat so the garment can be easily removed. It includes pockets and adjustable elastic drawstring for optimal fit.*



**SR 100165.** S / M / L / XL / 2XL / 3XL

**JR 100165.** 4 (6XS) / 6 (5XS) / 8 (4XS) / 10 (3XS) / 12 (2XS) / 14 (XS)

Fleece  
100% Polyester



**SR 902261.** S / M / L / XL

Interlock  
100% Polyester





# SUEZ II



LONG PANTS

N.O.S



SR 105411. S / M / L / XL / 2XL / 3XL

JR 105411. 4 (6XS) / 6 (5XS) / 8 (4XS) / 10 (3XS) / 12 (2XS) / 14 (XS)

Fleece  
100% Polyester

Pantalón largo perchado con rib en el bajo para un mejor ajuste. Incluye bolsillos y cintura elástica con cordón para un ajuste óptimo.

*Soft, warm, and comfortable inner fabric. Elastic waistband with internal drawstring. Ribbed hem. Open pockets.*



**331**  
NAVY



**100**  
BLACK



**700**  
ROYAL



**600**  
RED



**671**  
BURGUNDY



# ELBA



LONG PANTS

N.O.S



SR 100540. S / M / L / XL / 2XL / 3XL

JR 100540. 4 (6XS) / 6 (5XS) / 8 (4XS) / 10 (3XS) / 12 (2XS) / 14 (XS)

Fleece  
100% Polyester

Pantalón largo con diseño pitillo y abertura lateral con cremallera y fuelle para poner y quitar la prenda con facilidad. Incluye bolsillos con cremalleras y cintura elástica con cordón para un mejor ajuste.

*Long skinny pants with side openings on the lower part including zipper and inverted pleat so the garment can be easily removed. Includes zipper pockets and elastic waist for optimal fit.*



**331**  
DARK NAVY



**100**  
BLACK



**150**  
LIGHT MELANGE

BOLSILLO CON  
CREMALLERA  
POCKET  
WITH ZIPPER

CREMALLERA  
ZIPPER

LOOKS POLYESTER



# CANNES II



LONG PANTS

N.O.S



SR 101112. S / M / L / XL / 2XL / 3XL

JR 101112. 6XS / 5XS / 4XS / 3XS / 2XS / XS

Tricot  
100% Polyester

Pantalón largo con diseño recto y bolsillo con cremalleras. Incluye cintura elástica con cordón para un ajuste óptimo.

*Long straight pants with zipped pockets. It includes pockets and adjustable elastic drawstring for optimal fit.*

BOLSILLO CON  
CREMALLERA  
POCKET WITH ZIPPER



**100**  
BLACK



**331**  
DARK NAVY



# ESTADIO II



LONG PANTS

N.O.S



SR 101113. S / M / L / XL / 2XL / 3XL

JR 101113. 6XS / 5XS / 4XS / 3XS / 2XS / XS

Tricot  
100% Polyester

Pantalón largo con abertura lateral en el bajo para poner y quitar con facilidad. Incluye bolsillos y cintura elástica con cordón para un mejor ajuste.

*Long pants with side openings on the lowdown so the garment can be easily removed. It includes pockets and adjustable elastic drawstring for optimal fit.*



**100**  
BLACK



ELASTICO CON  
CREMALLERA  
CUFF WITH ZIPPER



**331**  
DARK NAVY





## FLEECE BERMUDA N.O.S

# CAPRI



SR 101101. S / M / L / XL / 2XL / 3XL

JR 101101. 6 (5XS) / 8 (4XS) / 10 (3XS) / 12 (2XS) / 14 (XS)

Fleece  
100% Polyester

Bermuda de felpa con bolsillos laterales, cintura con cordón para un ajuste óptimo y logo bordado.

*Felt Bermuda pants with side pockets, drawstring waist for optimum fit and embroidered logo.*



## BERMUDA N.O.S

# VELA



SR 100075. S / M / L / XL / 2XL / 3XL

JR 100075. 4 (6XS) / 6 (5XS) / 8 (4XS) / 10 (3XS) / 12 (2XS) / 14 (XS)

Interlock  
100% Polyester

Bermuda con cintura elástica y cordón para un ajuste óptimo.

*Bermuda shorts with elastic drawstring for optimal fit.*



## INTERLOCK N.O.S

# LUXOR II



SR 105412. S / M / L / XL / 2XL / 3XL

JR 105412. 4 (6XS) / 6 (5XS) / 8 (4XS) / 10 (3XS) / 12 (2XS) / 14 (XS)

Interlock  
100% Polyester

Pantalón pirata fabricado en poliéster interlock. Cintura elástica.

*Comfortable and highly durable fabric. Elastic waistband with internal drawstring.*



LOOKS POLYESTER



# COMBI



BERMUDA

N.O.S



SHORT

N.O.S



SR 103818. S / M / L / XL / 2XL / 3XL

JR 103818. 6 (5XS) / 8 (4XS) / 10 (3XS) / 12 (2XS) / 14 (XS)



SR 902254. S / M / L / XL

Microfiber  
100% Polyester  
Cotton feeling

Short con cinturilla elástica ajustable mediante cordón interior. Equipado con dos bolsillos laterales con cierre de cremallera. Fabricación en tejido cómodo y transpirable. Logotipo Joma bordado.

Shorts with an adjustable elastic waistband and inner drawstring. Two side pockets with zipper closure. Made with comfortable and breathable fabric. Embroidered Joma logo.



46 cm.  
size M

**331**  
DARK NAVY

**100**  
BLACK



36 cm.  
size M

**331**  
DARK NAVY

**100**  
BLACK

# MASTER



SHORT

N.O.S



SR 100186. S / M / L / XL / 2XL

Microfiber  
95% Polyester  
5% Elastan

Shorts de tenis dirigidos a la competición realizados en microfibra con elastán. Con cintura elástica ajustable con cordones y bolsillos laterales.

Competition tennis shorts made of microfibre with elastane. Adjustable elastic drawstring waist and side pockets.



46 cm.  
size M

BOLSILLO  
POCKET

**100**  
BLACK



**331**  
NAVY



**726**  
ROYAL



**200**  
WHITE

# MIAMI



SHORT

N.O.S



SR 100785. S / M / L / XL / 2XL - 3XL

JR 100785. 4 (6XS) - 6 (5XS) / 8 (4XS) - 10 (3XS) / 12 (2XS) / 14 (XS)

Interlock  
100% Polyester

Pantalón corto con bolsillos y cintura elástica con cordón para un ajuste óptimo.

Shorts with pockets and adjustable elastic drawstring for optimal fit.



46 cm.  
size M

BOLSILLO  
POCKET

**700**  
DARK ROYAL



**600**  
RED



**100**  
BLACK



**200**  
WHITE



**331**  
DARK NAVY



# OPEN III

SHORT

N.O.S



SR 102252. S / M / L / XL / 2XL - 3XL

JR 102252. 4 (6XS) - 6 (5XS) / 8 (4XS) - 10 (3XS) / 12 (2XS) / 14 (XS)

Interlock  
100% Polyester

Bermuda con bolsillos y cintura elástica ajustable mediante cordones. Incluye aberturas en los laterales para aumentar la libertad de movimiento. Logotipo bordado.

*Bermuda shorts come with embroidered logo, pockets and elastic drawstring waist. They also include side openings with zipper in the lower part of the garment.*



# DRIVE

SHORT

N.O.S



SR 100438. S / M / L / XL / 2XL - 3XL

JR 100438. 4 (6XS) - 6 (5XS) / 8 (4XS) - 10 (3XS) / 12 (2XS) / 14 (XS)

Interlock  
100% Polyester

Shorts de tenis dirigidos a la competición realizados en tejido de punto. Cintura elástica, ajustable con cordones. Con bolsillos laterales.

*Tennis shorts aimed at competition in knitted fabric. Adjustable elastic drawstring waist. With side pockets.*



# COSTA II

SHORT

N.O.S



SR 101114. S / M / L / XL / 2XL / 3XL

JR 101114. 4 (6XS) / 6 (5XS) / 8 (4XS) / 10 (3XS) / 12 (2XS) / 14 (XS)

Tricot  
100% Polyester

SR 101114.

JR 101114.

Pantalón corto, con bolsillos laterales sin cremallera y bolsillo trasero con cremallera. Cintura ajustable con cordón interior.

*Shorts with side pockets and one zipped back pocket. Adjustable elastic drawstring waist.*



# CANNES

SHORT

N.O.S



SR 105328. S / M / L / XL / 2XL / 3XL

JR 105328. 4 (6XS) / 6 (5XS) / 8 (4XS) / 10 (3XS) / 12 (2XS) / 14 (XS)

Tricot  
100% Polyester

SR 105328.

JR 105328.

Tejido cómodo y de alta durabilidad. Cintura elástica con cordón interior. Aberturas inferiores para mayor movilidad. Bolsillos sin cremallera.

*Comfortable and highly durable fabric. Elastic waistband with internal drawstring. Lower leg opening for greater mobility. Pockets without zips.*



LOOKS POLYESTER



SHORT

N.O.S

# HOBBY II



SR 902243. S / M / L / XL / 2XL

JR 902243. 12 (2XS) / 14 (XS)

Interlock  
100% Polyester

Short con cintura elástica ajustable mediante cordón interior. Incluye dos bolsillos laterales sin cremallera y con interior de mesh para que sean más ligeros. Fabricación con tejido ligero, transpirable y resistente. Logotipo Joma bordado.

*Shorts with adjustable elastic waistband an interior drawstring. Includes two side pockets without a zipper and with a mesh interior making them lighter. Made with lightweight, breathable, and resistant fabric. Embroidered Joma logo.*



35 cm.  
Size M

**331**  
DARK NAVY



**100**  
BLACK



SHORT

N.O.S

# HOBBY



SR 900250. S / M / L / XL / 2XL

JR 900250. 12 (2XS) / 14 (XS)

Interlock  
100% Polyester

Pantalón corto con bolsillos laterales. Incorpora aberturas en los laterales redondeadas para mejorar la movilidad y favorecer la libertad de movimientos. Cintura elástica con cordón para un ajuste óptimo.

*Short with side pockets. It features openings on the sides to allow greater freedom of movements. Adjustable elastic drawstring for optimal fit.*



27 cm.  
Size M

**100**  
BLACK



**200**  
WHITE



**331**  
DARK NAVY



**600**  
RED



**700**  
ROYAL



SHORT

N.O.S

# STELLA II



SR 900463. S / M / L / XL / 2XL

JR 900463. 8 (4XS) / 10 (3XS) / 12 (2XS) / 14 (XS)

Interlock  
100% Polyester

Pantalón corto con abertura curva en el lateral para favorecer la movilidad. Con cintura elástica con cordón interior para un ajuste óptimo.

*Shorts with curved openings on the sides to allow greater freedom of movements. With elastic drawstring waist for optimal fit.*



25,5 cm.  
Size M

**450**  
GREEN MEDIUM



**331**  
DARK NAVY



**600**  
RED



**100**  
BLACK



**500**  
RASPBERRY



**700**  
ROYAL



**900**  
YELLOW



# SCULPTURE



TIGHTS

N.O.S



SR 900683. S / M / L / XL / 2XL / 3XL

92% Polyamide  
8% Elastane

Malla larga que destaca por su cintura de compresión integrada y logo bordado.

*Long tights which stand out due to their integrated compression waist and embroidered logo.*



100  
BLACK



SR 900685. S / M / L / XL / 2XL

JR 900685. 4 (6XS) / 6 (5XS) / 8 (4XS) / 10 (3XS) / 12 (2XS) / 14 (XS)

92% Polyamide  
8% Elastane

Malla larga que incorpora un perchado interior para retener el calor y logo bordado.

*Long tights with brushed lining to retain heat and embroidered logo.*



100  
BLACK



SR 900684. S / M / L / XL / 2XL / 3XL

92% Polyamide  
8% Elastane

Malla pirata que destaca por su cintura de compresión integrada y logo bordado.

*3/4 leggings which stand out due to their integrated compression waist and embroidered logo.*



60 cm.  
Size M

100  
BLACK

LOOKS POLYESTER



## TIGHTS

N.O.S

# ASCONA



SR 901127. S / M / L / XL / 2XL

JR 901127. 4 (6XS) / 6 (5XS) / 8 (4XS) / 10 (3XS) / 12 (2XS) / 14 (XS)

90% Polyamide  
10% Elastane

Malla con cintura elástica. Los cortes son a contraste en los laterales. Logo J serigrafiado.  
*Tights with elasticated waistband. With contrasting side panels. Screen printed J logo.*



**102**

BLACK/WHITE



**119**

BLACK/CORAL FLUOR



**342**

DARK NAVY/TURQUOISE



**118**

BLACK/PINK FLUOR



## TIGHTS

N.O.S

# DASE II



SR 900681. S / M / L / XL / 2XL

JR 900681. 8 (4XS) - 10 (3XS) / 12 (2XS) / 14 (XS)

92% Polyamide  
8% Elastane

Malla larga con cordón interior en la cintura para un ajuste óptimo. Destaca por su tejido gofrado y logo bordado.

*Long tights with inner drawstring at the waist for optimal fit. Stands out for its embossed fabric and embroidered logo.*



**100**

BLACK



## TIGHTS

N.O.S



SR 900682. S / M / L / XL / 2XL

JR 900682. 8 (4XS) - 10 (3XS) / 12 (2XS) / 14 (XS)

92% Polyamide  
8% Elastane

Malla pirata con cordón interior en la cintura para un ajuste óptimo. Destaca por su tejido gofrado y logo bordado.

*3/4 leggings with inner drawstring at waist for optimal fit. Stands out for its embossed fabric and embroidered logo.*



60 cm.  
Size M

**100**

BLACK

